

SVEN[®]
YOU WANT – WE CAN

2.1 Multimedia Speaker System

OPERATION MANUAL



MS-908

www.sven.fi

Congratulations on your purchase of the Sven speaker system!

COPYRIGHT

© 2014. SVEN PTE. LTD. Version 1.0 (V 1.0).

This Manual and information contained in it are copyrighted. All rights reserved.

TRADEMARKS

All trademarks are the property of their legal holders.

NOTICE OF RESPONSIBILITY RESTRICTION

Despite the exerted efforts to make this Manual more exact, some discrepancies may occur. The information in this Manual is given on «as is» terms. The author and the publisher do not bear any liability to a person or an organization for loss or damage which has arisen from the information contained in this Manual.

CONTENTS

1. BUYER RECOMMENDATIONS	2
2. PACKAGE CONTENTS	3
3. SAFETY PRECAUTIONS	3
4. TECHNICAL DESCRIPTION	3
5. PREPARATION AND OPERATION	4
6. TROUBLESHOOTING	5
7. TECHNICAL SPECIFICATIONS	6

1. BUYER RECOMMENDATIONS

- Unpack the device carefully. Make sure there are no accessories left in the box. Check up the device for damage; if the product was damaged during transportation, address the firm which carried out the delivery; if the product functions incorrectly, address the dealer at once.
- Check up the package contents and availability of the warranty card. Make sure the warranty card has a shop stamp, a legible signature or the seller's stamp and purchase date, and the goods number corresponds to that in the warranty card.
- Do not switch on the speaker system immediately after you bring it into a room from environment with negative temperature! After unpacking, the speaker system should be kept in conditions of room temperature for at least 4 hours.
- Before installing and using the speaker system, read this Manual carefully and keep it for future reference.

Technical support is on www.sven.fi.

2. PACKAGE CONTENTS

- Subwoofer — 1 pc
- Satellites — 2 pcs
- 2RCA to mini-jack (Ø 3.5 mm) signal cable — 1 pc
- Operation manual — 1 pc
- Warranty card — 1 pc

3. SAFETY PRECAUTIONS



Caution! High voltage inside! To avoid the risk of electric shock do not open and touch elements inside.

- To avoid electric shock, do not open the MSS and do not perform repairs by yourself. Service and repairs should be performed only by qualified specialists in an authorized service center. The list of authorized service centers is available on www.sven.fi
- Do not allow the circuit of wires (including the grounded ones) between the speakers, on the power amplifier or the ground, for it causes damage to the power amplifier output stage.
- Do not touch the MSS power cord plug pins for 2 seconds after unplugging it from the mains.
- Disconnect the MSS from the mains system during a fuse replacement. Use fuses of the same type and rated value. Do not use hand-made fuses.
- Do not put foreign objects inside the holes of the MSS.
- Protect the MSS from high humidity, water and dust.
- Protect the MSS from heating: do not place it closer than 1 m from a heat source. Do not expose it to direct sunlight.
- Do not place any open flame sources on or close to MSS.
- Do not place the MSS in poorly ventilated areas. Leave an air gap of 10 cm or more. When operating the MSS, do not put any devices on it, do not cover it with cloth or other objects preventing it from cooling.
- Do not use any chemical agents for cleaning. Clean it with dry soft cloth only.

4. TECHNICAL DESCRIPTION

MS-908 2.1 Multimedia Speaker System (MSS) is designed to play music and sound games, movies, etc. Thanks to the amplifier module the MSS can be connected practically to any audio signal source (CD/DVD-players, TV set, PC, etc.).

Special features

- Speaker system is compatible with PCs, DVD/Media-players, mobile devices and other sound sources
- LED satellites illumination
- Magnetic shielding
- Master volume control
- Subwoofer volume control
- MDF subwoofer cabinet

Control panel

- ① VOLUME: Master volume control
- ② BASS: Bass level control
- ③ AUDIO INPUT: Audio input
- ④ Power switch
- ⑤ AUDIO OUTPUT: audio output for satellites
- ⑥ Power cord

5. PREPARATION AND OPERATION**Speaker placement**

- Place the speakers symmetrically to the listener at least one meter away. The subwoofer emits non-directional sound, therefore it can be located in any place of the room where it sounds the best.
- Place MSS far away from monitors and TV sets, as insignificant image distortion in these supersensitive devices is possible.

MSS connecting and control

WARNING! All components should be switched off before connection.

- Connect the built-in audio cables to the audio outputs ⑤ on the rear panel of subwoofer (see Fig. 2).
- To connect the MSS to a PC or MP3/CD player, use the 2RCA – mini-jack signal cable (included). For this at first plug the RCA jacks of the signal cable into input connector AUDIO INPUT of subwoofer ③, and another mini-jack of cable should be plugged in Ø 3.5 mm LINE OUT port of the computer sound card or audio output of player as shown in Fig. 2.

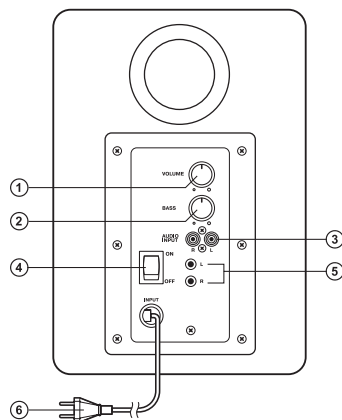


Fig. 1. Control panel

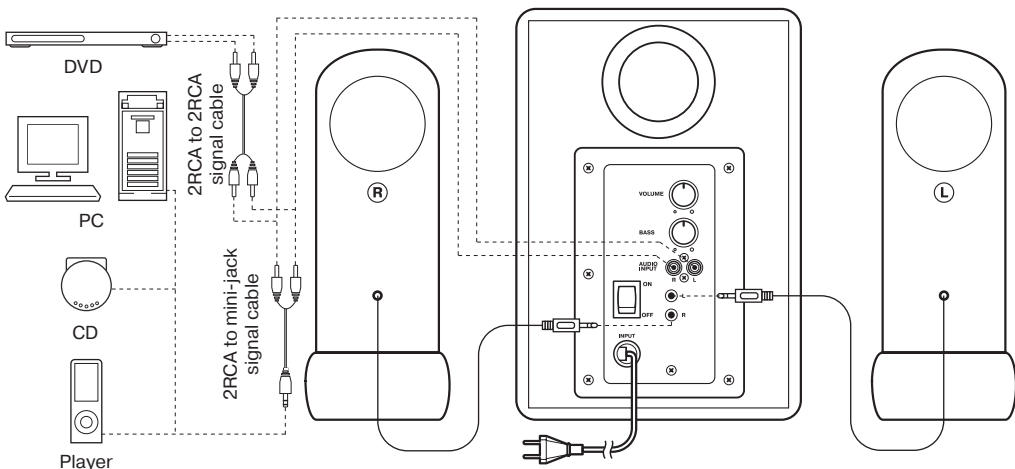


Fig. 2. Connection diagram

- Use the 2RCA to 2RCA signal cable (not included) to connect the MSS to a TV, DVD/CD-players. To do this, use the signal cable to connect
- To connect the MSS to a TV, DVD/CD-players, use the 2RCA to 2RCA signal cable (not included). For this at first plug the RCA jacks of the signal cable into input connector AUDIO INPUT of subwoofer ③, and the other RCA jacks of cable should be plugged into TV or DVD/CD-player audio outputs as shown in Fig. 2.
- Plug the power cord ⑥ (Fig. 1) on the rear panel of the subwoofer into an outlet.
- Set the master volume to minimum, turn VOLUME ① counter-clockwise until it stops.
- Turn the power switch POWER ④ (position ON) on the rear panel of the subwoofer. Power LED will illuminate.
- Turn on your audio source.
- Adjust the master volume level by turning the VOLUME knob ①. Adjust the subwoofer volume level by turning the BASS knob ②. By turning the knobs clockwise master volume level/subwoofer volume level increases, while by turning counter-clockwise it is reduced.

Notes: If you don't use MSS for a long time, make sure the device is turned off, check POWER switch and unplug the power cord. Use the soundcard Line&Out port to improve sound quality.

6. TROUBLESHOOTING

Problem	Cause	Solution
The MSS doesn't turn on.	The MSS isn't connected to the mains outlet.	Check the connection.
	Power switch is off.	Turn on the switch.
No sound.	Volume level is set at minimum value.	Adjust the volume control knob.
	Improperly connected audio source.	Connect audio sources correctly.
There is too quiet sound of speakers.	Volume level is set at minimum value.	Adjust the volume control knob.
Distortion of sound.	Large amplitude of the input signal.	Turn down the source volume and MSS volume.

If none of the above methods can solve the problem, please seek professional advice at your nearest service center. Never attempt to repair the product yourself.

7. TECHNICAL SPECIFICATIONS

Parameter, measurement unit	Value
Output power (RMS), W subwoofer satellites	28 (12 + 2 × 8) 12 2 × 8
Speaker diameters, mm subwoofer satellites	∅ 125 ∅ 50
Voltage supply, V/Hz	~220/50
Frequency range, Hz subwoofer satellites	40 – 150 150 – 20 000
Dimensions (one speaker), mm subwoofer satellites	242 × 162 × 242 200 × 70 × 100
Weight, kg	3.2

Notes:

- **Technical specifications given in this table are supplemental information and cannot give occasion to claims.**
- **Technical specifications and package contents are subject to change without notice due to the improvement of SVEN production.**

2.1 Multimedia Speaker System

SVEN®
YOU WANT – WE CAN



Модель: **MS-908**

Импортер в России: ООО «СКАНДИТРЕЛ», 111024, РФ, г. Москва, ул. Авиамоторная, д. 65, стр. 1.

Уполномоченная организация в России:

ООО «РТ-Ф», 105082, г. Москва, ул. Фридриха Энгельса, д. 75, стр. 5.

Условия гарантийного обслуживания смотрите в гарантийном талоне или на сайте www.sven.fi

Гарантийный срок: 12 мес. Срок службы: 5 лет.

Производитель: «СВЕН ПТЕ. Лимитед», 176

Джу Чиат Роуд, № 02-02, Сингапур, 427447.

Произведено под контролем «Свен Скандинавия

Лимитед», 48310, Финляндия, Котка,

Котлахдентие, 15. Сделано в Китае.

Manufacturer: SVEN PTE. LTD, 176 Joo Chiat Road,

№ 02-02, Singapore, 427447. Produced under the

control of Oy Sven Scandinavia Ltd, 15,

Kotolahdentie, Kotka, Finland, 48310.

Made in China.

® Registered Trademark of Oy SVEN
Scandinavia Ltd. Finland.

MS-908