

# TP-LINK®

## User Guide

### Archer T1U

AC450 Wireless Nano USB Adapter



---

REV1.1.0

1910011471

## **COPYRIGHT & TRADEMARKS**

Specifications are subject to change without notice. **TP-LINK** is a registered trademark of TP-LINK TECHNOLOGIES CO., LTD. Other brands and product names are trademarks or registered trademarks of their respective holders.

No part of the specifications may be reproduced in any form or by any means or used to make any derivative such as translation, transformation, or adaptation without permission from TP-LINK TECHNOLOGIES CO., LTD. Copyright © 2015 TP-LINK TECHNOLOGIES CO., LTD. All rights reserved.

<http://www.tp-link.com>

## **FCC STATEMENT**



This equipment has been tested and found to comply with the limits for a Class B digital device, pursuant to part 15 of the FCC Rules. These limits are designed to provide reasonable protection against harmful interference in a residential installation. This equipment generates, uses and can radiate radio frequency energy and, if not installed and used in accordance with the instructions, may cause harmful interference to radio communications. However, there is no guarantee that interference will not occur in a particular installation. If this equipment does cause harmful interference to radio or television reception, which can be determined by turning the equipment off and on, the user is encouraged to try to correct the interference by one or more of the following measures:

- Reorient or relocate the receiving antenna.
- Increase the separation between the equipment and receiver.
- Connect the equipment into an outlet on a circuit different from that to which the receiver is connected.
- Consult the dealer or an experienced radio/ TV technician for help.

This device complies with part 15 of the FCC Rules. Operation is subject to the following two conditions:

- 1) This device may not cause harmful interference.
- 2) This device must accept any interference received, including interference that may cause undesired operation.

Any changes or modifications not expressly approved by the party responsible for compliance could void the user's authority to operate the equipment.

Note: The manufacturer is not responsible for any radio or TV interference caused by unauthorized modifications to this equipment. Such modifications could void the user's authority to operate the equipment.

### **FCC RF Radiation Exposure Statement:**

This equipment complies with FCC radiation exposure limits set forth for an uncontrolled environment. End users must follow the specific operating instructions for satisfying RF exposure compliance. This transmitter must not be co-located or operating in conjunction with any other antenna or transmitter. This equipment has been SAR-evaluated for use in hand. SAR measurements are based on a 5mm spacing from the body and that compliance is achieved at that distance.

The device operates in 5.18 ~ 5.24GHz / 5.26 ~ 5.32GHz / 5.50 ~ 5.70 GHz/ 5.745 ~ 5.825GHz frequency range. It is restricted in indoor environment only. This device meets all the other requirements specified in Part 15E, Section 15.407 of the FCC Rules.

## CE Mark Warning



This is a class B product. In a domestic environment, this product may cause radio interference, in which case the user may be required to take adequate measures.

## RF Exposure Information

This device meets the EU requirements (1999/519/EC) on the limitation of exposure of the general public to electromagnetic fields by way of health protection.

This device has been tested and meets the ICNIRP exposure guidelines and the European Standard EN 62209-2. SAR is measured with this device at a separation of 0.5 cm to the body, while transmitting at the highest certified output power level in all frequency bands of this device. Carry this device at least 0.5 cm away from your body to ensure exposure levels remain at or below the as-tested levels.

## National Restrictions

This device is intended for home and office use in all EU countries (and other countries following the EU directive 1999/5/EC) without any limitation except for the countries mentioned below:

Country	Restriction	Reason/remark
Belarus	Not implemented	
Norway	Implemented	This subsection does not apply for the geographical area within a radius of 20 km from the centre of Ny-Ålesund on Svalbard
Italy	Implemented	The public use is subject to general authorisation by the respective service provider
Russian Federation	Limited implementation	<b>1. SRD with FHSS modulation</b> 1.1. Maximum 2.5 mW e.i.r.p. 1.2. Maximum 100 mW e.i.r.p. Permitted for use SRD for outdoor applications without restriction on installation height only for purposes of gathering telemetry information for automated monitoring and resources accounting systems. Permitted to use SRD for other purposes for outdoor applications only when the installation height is not exceeding 10 m above the ground surface. 1.3. Maximum 100 mW e.i.r.p. Indoor applications <b>2. SRD with DSSS and other than FHSS wideband modulation</b> 2.1. Maximum mean e.i.r.p. density is 2 mW/MHz. Maximum

		100 mW e.i.r.p. 2.2. Maximum mean e.i.r.p. density is 20 mW/MHz. Maximum 100 mW e.i.r.p. It is permitted to use SRD for outdoor applications only for purposes of gathering telemetry information for automated monitoring and resources accounting systems or security systems. 2.3. Maximum mean e.i.r.p. density is 10 mW/MHz. Maximum 100 mW e.i.r.p. Indoor applications
Ukraine	Limited implementation	e.i.r.p. ≤100 mW with built-in antenna with amplification factor up to 6 dBi

ATTENTION: Due to EU law, the country settings must be identical to the country where the device is operating (important due to non-harmonised frequencies in the EU).

Restricted to indoor use.

## Canadian Compliance Statement

This device complies with Industry Canada license-exempt RSSs. Operation is subject to the following two conditions:

- (1) This device may not cause interference, and
- (2) This device must accept any interference, including interference that may cause undesired operation of the device.

Le présent appareil est conforme aux CNR d'Industrie Canada applicables aux appareils radio exempts de licence. L'exploitation est autorisée aux deux conditions suivantes :

- (1) l'appareil ne doit pas produire de brouillage;
- (2) l'utilisateur de l'appareil doit accepter tout brouillage radioélectrique subi, même si le brouillage est susceptible d'en compromettre le fonctionnement.

## Caution:

- (i) the device for operation in the band 5150–5250 MHz is only for indoor use to reduce the potential for harmful interference to co-channel mobile satellite systems;
- (ii) for devices with detachable antenna(s), the maximum antenna gain permitted for devices in the bands 5250-5350 MHz and 5470-5725 MHz shall be such that the equipment still complies with the e.i.r.p. limit;
- (iii) for devices with detachable antenna(s), the maximum antenna gain permitted for devices in the band 5725-5850 MHz shall be such that the equipment still complies with the e.i.r.p. limits specified for point-to-point and non-point-to-point operation as appropriate; and

The high-power radars are allocated as primary users (i.e. priority users) of the bands 5250-5350 MHz and 5650-5850 MHz and that these radars could cause interference and/or damage to LE-LAN devices.

DFS (Dynamic Frequency Selection) products that operate in the bands 5250- 5350 MHz, 5470-5600MHz, and 5650-5725MHz.

## **Avertissement:**

(i) Le dispositif fonctionnant dans la bande 5150-5250 MHz est réservé uniquement pour une utilisation à l'intérieur afin de réduire les risques de brouillage préjudiciable aux systèmes de satellites mobiles utilisant les mêmes canaux;

(ii) le gain maximal d'antenne permis pour les dispositifs avec antenne(s) amovible(s) utilisant les bandes 5250-5350 MHz et 5470-5725 MHz doit se conformer à la limitation P.I.R.E.;

(iii) le gain maximal d'antenne permis pour les dispositifs avec antenne(s) amovible(s) utilisant la bande 5725-5850 MHz doit se conformer à la limitation P.I.R.E. spécifiée pour l'exploitation point à point et non point à point, selon le cas.

En outre, les utilisateurs devraient aussi être avisés que les utilisateurs de radars de haute puissance sont désignés utilisateurs principaux (c.-à-d., qu'ils ont la priorité) pour les bandes 5250-5350 MHz et 5650-5850 MHz et que ces radars pourraient causer du brouillage et/ou des dommages aux dispositifs LAN-EL.

Les produits utilisant la technique d'atténuation DFS (sélection dynamique des fréquences) sur les bandes 5250- 5350 MHz, 5470-5600MHz et 5650-5725MHz.

## **Radiation Exposure Statement:**

This equipment complies with IC radiation exposure limits set forth for an uncontrolled environment. This equipment should be installed and operated with minimum distance 20cm between the radiator & your body.

## **Déclaration d'exposition aux radiations:**

Cet équipement est conforme aux limites d'exposition aux rayonnements IC établies pour un environnement non contrôlé. Cet équipement doit être installé et utilisé avec un minimum de 20 cm de distance entre la source de rayonnement et votre corps.

## **Industry Canada Statement**

CAN ICES-3 (B)/NMB-3(B)

## **Korea Warning Statements**

당해 무선설비는 운용중 전파혼신 가능성이 있음.

## **NCC Notice & BSMI Notice**

注意!

依據 低功率電波輻射性電機管理辦法

第十二條 經型式認證合格之低功率射頻電機，非經許可，公司、商號或使用者均不得擅自變更頻率、加大功率或變更原設計之特性或功能。

第十四條 低功率射頻電機之使用不得影響飛航安全及干擾合法通信；經發現有干擾現象時，應立即停用，並改善至無干擾時方得繼續使用。前項合法通信，指依電信規定作業之無線電信。低功率射頻電機需忍受合法通信或工業、科學以及醫療用電波輻射性電機設備之干擾。

減少電磁波影響，請妥適使用。

**於 5.25GHz 至 5.35GHz 區域內操作之無線設備的警告聲明**

工作頻率 5.250~5.350GHz 該頻段限於室內使用。

### 安全諮詢及注意事項

- 請使用原裝電源供應器或只能按照本產品注明的電源類型使用本產品。
- 清潔本產品之前請先拔掉電源線。請勿使用液體、噴霧清潔劑或濕布進行清潔。
- 注意防潮，請勿將水或其他液體潑灑到本產品上。
- 插槽與開口供通風使用，以確保本產品的操作可靠並防止過熱，請勿堵塞或覆蓋開口。
- 請勿將本產品置放於靠近熱源的地方。除非有正常的通風，否則不可放在密閉位置中。
- 請不要私自打開機殼，不要嘗試自行維修本產品，請由授權的專業人士進行此項工作。



Продукт сертифіковано згідно с правилами системи УкрСЕПРО на відповідність вимогам нормативних документів та вимогам, що передбачені чинними законодавчими актами України.



### Safety Information

- When product has power button, the power button is one of the way to shut off the product; when there is no power button, the only way to completely shut off power is to disconnect the product or the power adapter from the power source.
- Don't disassemble the product, or make repairs yourself. You run the risk of electric shock and voiding the limited warranty. If you need service, please contact us.
- Avoid water and wet locations.

This product can be used in the following countries:

AT	BG	BY	CA	CZ	DE	DK	EE
ES	FI	FR	GB	GR	HU	IE	IT
LT	LV	MT	NL	NO	PL	PT	RO
RU	SE	SG	SK	TR	UA	US	

## DECLARATION OF CONFORMITY

For the following equipment:

Product Description: **AC450 Wireless Nano USB Adapter**

Model No.: **Archer T1U**

Trademark: **TP-LINK**

We declare under our own responsibility that the above products satisfy all the technical regulations applicable to the product within the scope of Council Directives:

Directives 1999/5/EC, Directives 2006/95/EC, Directives 1999/519/EC, Directives 2011/65/EU

The above product is in conformity with the following standards or other normative documents:

**EN 300 328 V1.8.1**

**EN 301 489-1 V1.9.2 & EN 301 489-17 V2.2.1**

**EN 60950-1: 2006 + A11: 2009 + A1: 2010 + A12: 2011 + A2: 2013**

**EN 50566: 2013**

**EN 301 893 V1.7.1**

*The product carries the CE Mark:*

**CE 1588** 

Person responsible for making this declaration:



**Yang Hongliang**  
**Product Manager of International Business**

Date of issue: 2015-10-28



# CONTENTS

<b>Chapter 1 Product Overview .....</b>	<b>1</b>
1.1 Introduction .....	1
1.2 Features .....	1
1.3 LED Status .....	1
<b>Chapter 2 Connect to a Computer .....</b>	<b>2</b>
<b>Chapter 3 Windows .....</b>	<b>3</b>
3.1 Install Driver and Utility .....	3
3.2 Join a Wireless Network.....	5
3.2.1 TP-LINK Utility.....	6
3.2.2 WPS (Wi-Fi Protected Setup).....	6
3.2.3 Windows Wireless Utility .....	9
3.3 Management .....	10
3.3.1 Status .....	10
3.3.2 Profile .....	11
3.3.3 Advanced .....	13
3.3.4 SoftAP .....	13
3.3.5 About.....	14
3.4 Uninstall Driver and Utility .....	15
<b>Chapter 4 Mac OS X .....</b>	<b>16</b>
4.1 Install Driver and Utility .....	16
4.2 Join a Wireless Network.....	20
4.2.1 TP-LINK Utility.....	21
4.2.2 WPS (Wi-Fi Protected Setup).....	22
4.3 Management .....	24
4.3.1 Link Status .....	25
4.3.2 Profile .....	25
4.4 Uninstall Driver and Utility .....	28
<b>Chapter 5 Linux .....</b>	<b>29</b>
<b>Appendix A: Specifications .....</b>	<b>30</b>
<b>Appendix B: Glossary .....</b>	<b>31</b>

# Chapter 1 Product Overview

## 1.1 Introduction

The TP-LINK Archer T1U AC450 Wireless Nano USB Adapter connects your notebook or desktop computer over Wi-Fi to an 11ac or other network for applications such as lag-free video streaming, online gaming, and secure Internet surfing.

## 1.2 Features

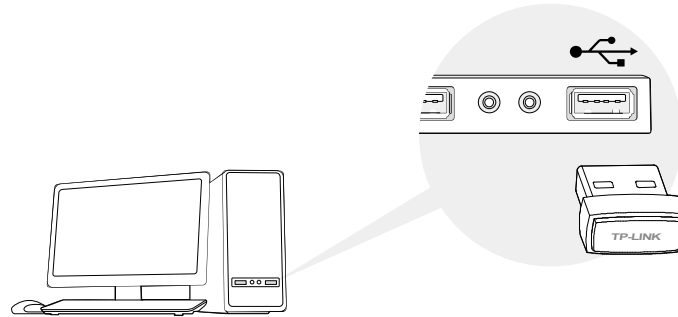
- Supports 802.11ac standard
- Seamlessly compatible with 802.11a/n/ac products
- Maximum speed of up to 433Mbps for 5GHz network
- Supports ad-hoc and infrastructure mode
- Supports 64/128 WEP, WPA/WPA2, WPA-PSK/WPA2-PSK(TKIP/AES), supports IEEE 802.1x
- Easy Wireless Configuration Utility
- Supports Windows 8.1/8/7/XP 32/64bit, Mac OS X 10.7 - 10.10, Linux

## 1.3 LED Status

Status	Working Status
Off	The driver has not been installed; The adapter's radio has been disabled.
Flashing Slowly	The driver has been installed but no data is being transmitted or received.
Flashing Quickly	Data is being transmitted or received.

## Chapter 2 Connect to a Computer

Before you begin using your adapter, insert the adapter into a USB port on your computer directly.



 **Note:**

In Windows XP, a **Found New Hardware Wizard** window will appear when the adapter is detected. Please click **Cancel**.

After connecting your adapter to the computer, please follow the instructions in the appropriate chapter for your operating system: [Windows](#), [Mac OS X](#), [Linux](#).

## Chapter 3 Windows

### 3.1 Install Driver and Utility

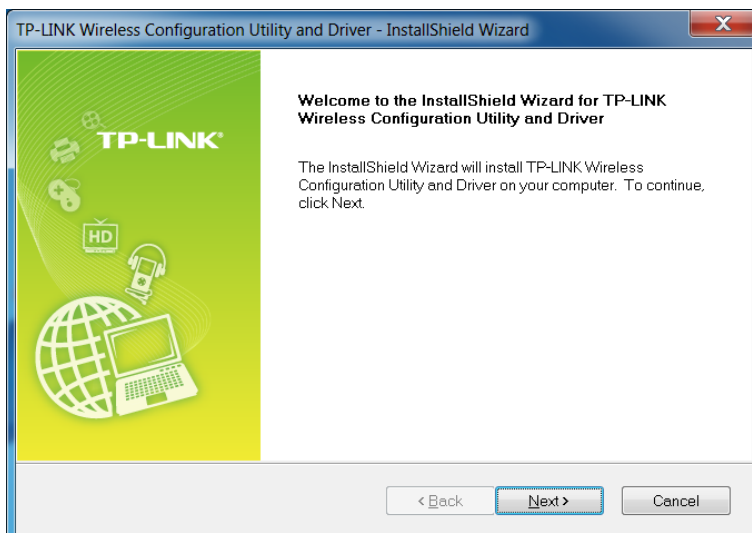
The Setup Wizard will guide you through the installation procedures. We use the procedures in Windows 7 as an example - the procedures may vary slightly for other versions of Windows.

1. Insert the resource CD into your CD drive and run the **Autorun.exe** from the pop-up AutoPlay window. Select **Archer T1U** and click **Install Driver&Utility** to begin.

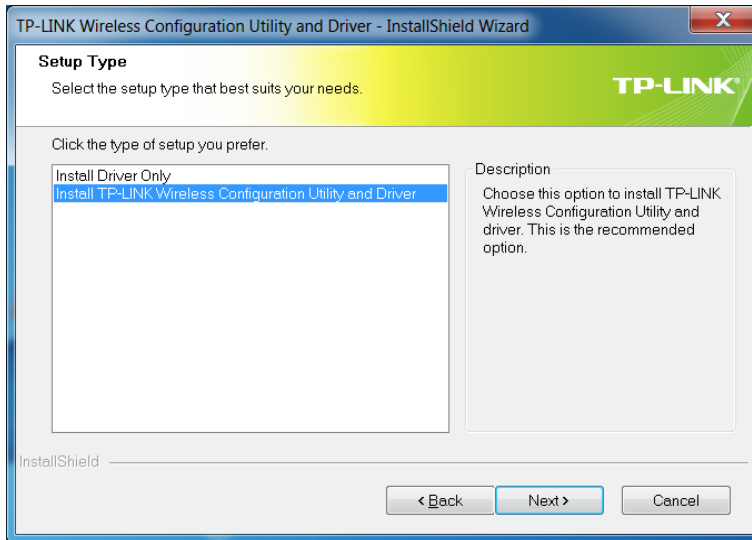


 **Note:**

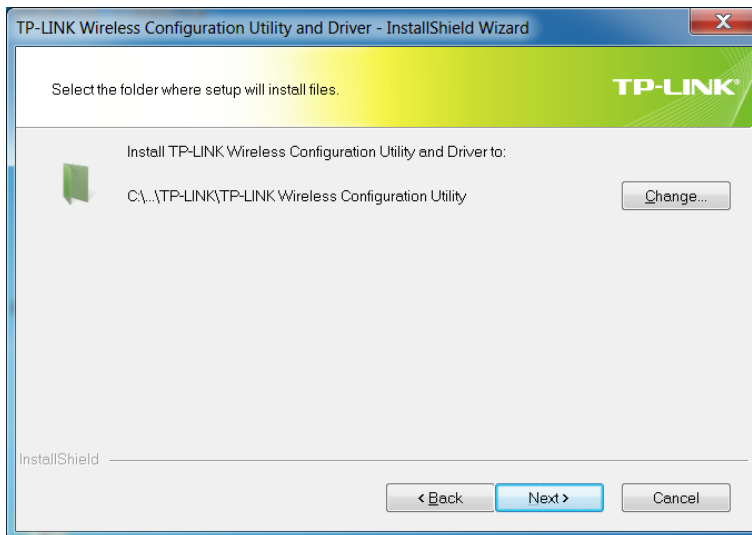
- The CD is included in the package. If your CD does not work or your computer doesn't support the CD, you can also download the driver and utility from the TP-LINK website ([www.tp-link.com](http://www.tp-link.com)).
  - In some operating systems, the CD screen will pop up automatically. Otherwise, run the CD manually.
2. The InstallShield Wizard window displays. Click **Next** to continue.



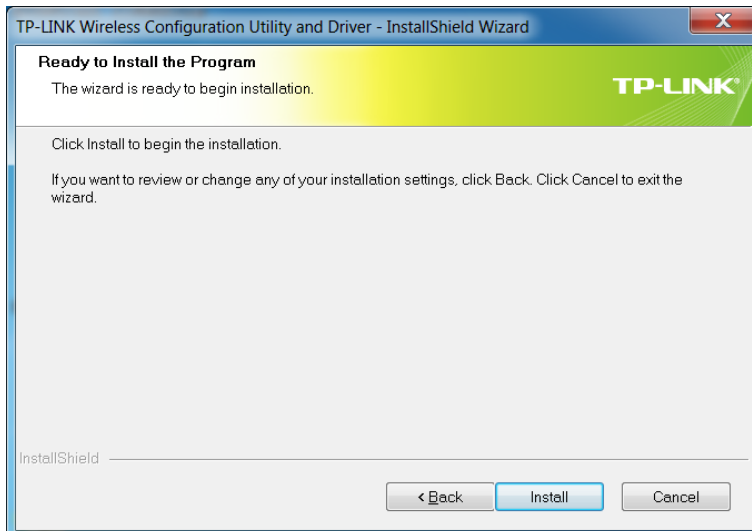
3. Choose a setup type. It is recommended to select **Install TP-LINK Wireless Configuration Utility and Driver**. Click **Next**.

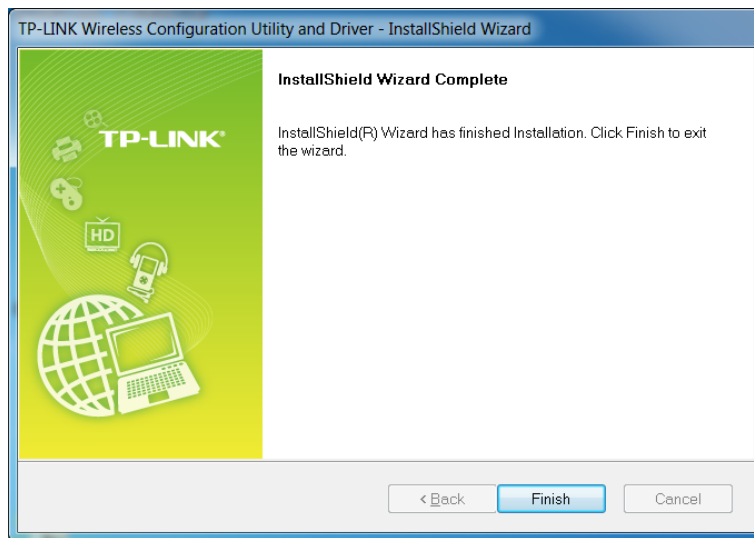




4. If you want to change install location, click **Change** to specify the location for the software installation. Or you can leave it default. Click **Next**.

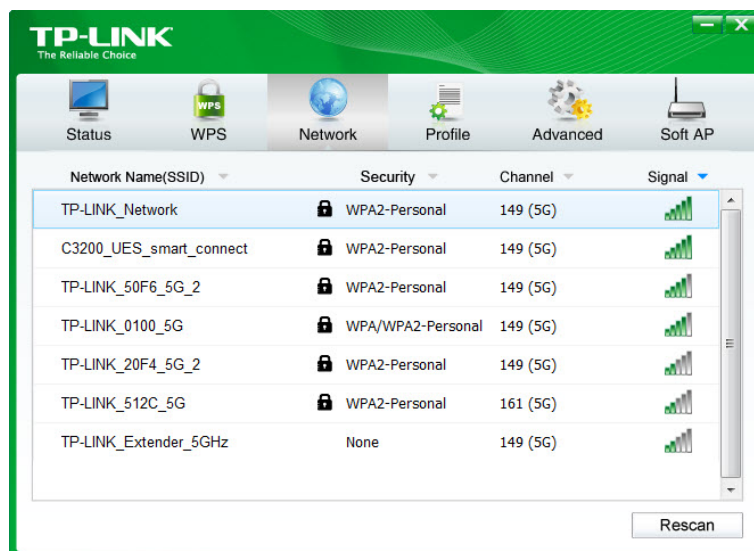


5. Click **Install**. After a few minutes, the installation completes. Click **Finish**.





6. TP-LINK utility pops up after installation. Its icon appears on the desktop as  and in the Windows system tray as . You can use the TP-LINK utility to join a Wi-Fi network with your adapter. For more guidance, please refer to [Join a Wireless Network](#).



## 3.2 Join a Wireless Network

There are three options of using the adapter to join a Wi-Fi network.

### Option 1: [TP-LINK Utility](#)

TP-LINK Utility lets you easily connect the adapter to a Wi-Fi network and manage the adapter.

### Option 2: [WPS \(Wi-Fi Protected Setup\)](#)

WPS (Wi-Fi Protected Setup) is a network security standard for easily adding computers and other devices to a home network. Use this method if your wireless router or access point supports WPS.

### Option 3: [Windows Wireless Utility](#)

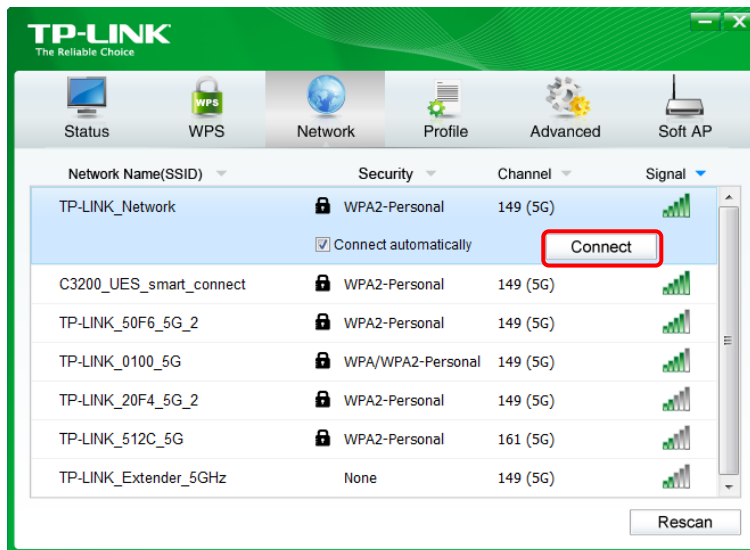
You can use the Windows WLAN Autoconfig service (for Windows 8.1/8/7) and the Wireless Zero Configuration service (for Windows XP) to join a Wi-Fi network.

### 3.2.1 TP-LINK Utility

1. Open the TP-LINK Utility . The **Network** screen displays.



2. Select the network you want to join from the list on this screen and click **Connect**. If you want the adapter to automatically connect to the network next time, select the **Connect automatically** checkbox. Enter your Wi-Fi password when prompted.



 **Note:**

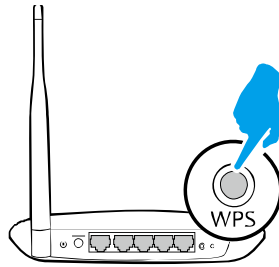
If your Wi-Fi network is not displayed in the list, you can try to join it by [WPS](#) or by adding a profile in the [Profile](#) screen.

### 3.2.2 WPS (Wi-Fi Protected Setup)

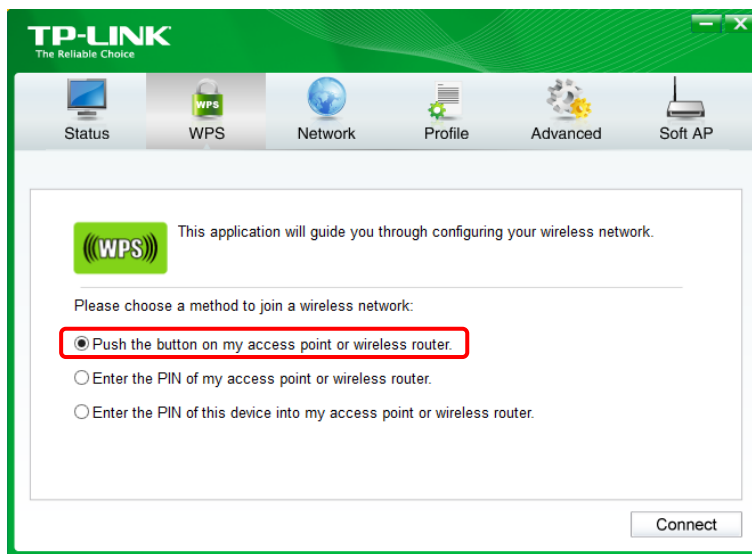
WPS can be activated via PBC (Push Button Configuration) and PIN code. Please refer to [PBC](#) or [PIN](#) below.

➤ **PBC**

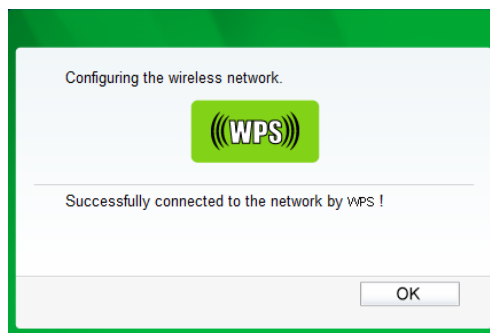
1. Press the **WPS/QSS** button on your router or AP.



2. Open TP-LINK Utility and click **WPS** tab. Select **Push the button on my access point or wireless router** and click **Connect**.



3. The following screen indicates a successful connection by WPS. Click **OK**.

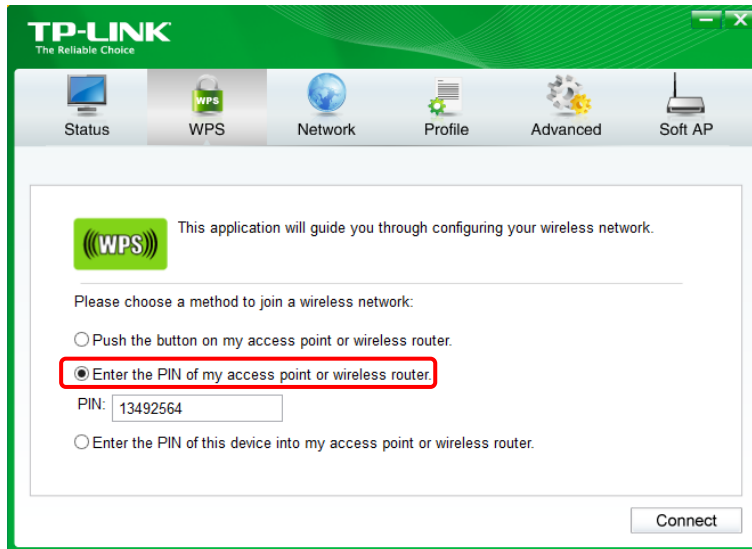


➤ **PIN**

**Option 1**

1. Open TP-LINK Utility and click **WPS** tab. Select **Enter the PIN of my access point or wireless router**. Enter the PIN of your router or AP. Click **Connect**.





 **Note:**

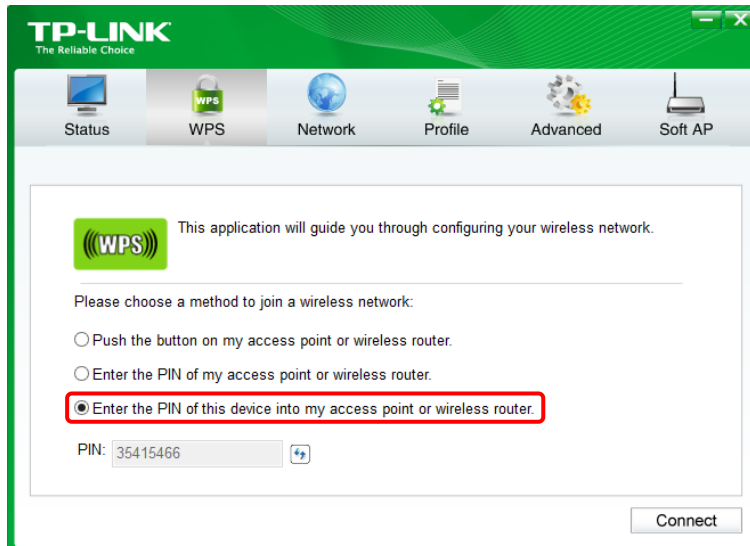
The default PIN of your router or AP is printed on the product label of your router or AP. If you generated a new PIN for your router, please enter the new one.

2. The following screen indicates a successful connection by WPS. Click **OK**.



## Option 2

1. Open TP-LINK Utility and click **WPS** tab. Select **Enter the PIN of this device into my access point or wireless router**. The screen displays a PIN of the adapter, which is generated randomly. Click **Connect**.





2. Log in to the Web Management page of your router or AP. Go to the **WPS** page, enter the PIN of the adapter in the corresponding field and click **Connect**.
3. The following screen indicates a successful connection by WPS. Click **OK**.



### 3.2.3 Windows Wireless Utility

Follow the instructions in the appropriate section below to use your computer system's built-in wireless utility: [Windows 8.1/8/7](#), [Windows XP](#).

#### ➤ Windows 8.1/8/7


1. Click  or  (Network icon) on the system tray. Select the network you want to join, and click **Connect**. Enter your Wi-Fi password when prompted.

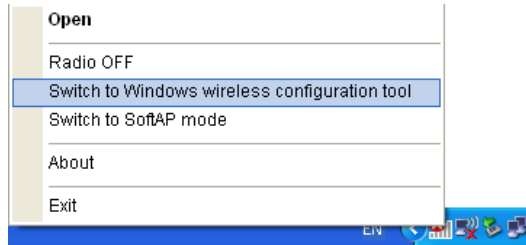
#### **Note:**

If you do not want to enter the Wi-Fi password, you can also join a wireless network either by pushing the WPS or QSS button on your router or AP, or entering the PIN of your router when the screen prompts you to do so, and click **Next**.

2. When **Connected** displays next to the network name (SSID) on the screen, it indicates a successful network connection.

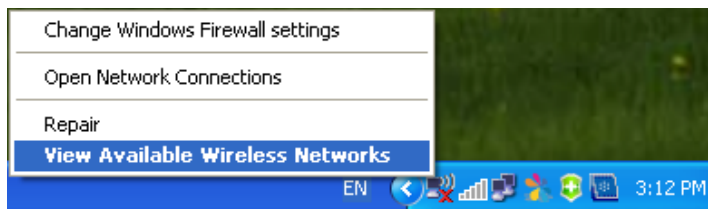
## ➤ Windows XP

1. Right-click  (TP-LINK Utility icon) on the system tray. (If you do not see the icon, click the hidden icons arrow on the system tray.) Select **Switch to Windows wireless configuration tool**.



Or you can open the TP-LINK Utility and select **Advanced** tab. Select **Use Windows wireless configuration tool** the following figure shows. Click **OK** when it prompts.

2. Right-click  (Windows XP Wireless Zero Configuration Utility icon) on the system tray, and select **View Available Wireless Networks**.



3. Select the network you want to join, and click **Connect**. Enter your Wi-Fi password when prompted.

## 3.3 Management

TP-LINK Utility provides you with an easy way to manage your adapter. It includes the following sections:

**Status** - View the information of the current Wi-Fi network connection and of the adapter.

**Profile** - Save or manage various Wi-Fi network connection settings.

**Advanced** - Turn on or off the power saving mode, switch between TP-LINK Utility and Windows Wireless Utility (for Windows XP only).

**SoftAP** - Turn on or off the SoftAP mode. Configure the settings of the network shared by your adapter, and view the IP address of your adapter when it works on SoftAP mode.

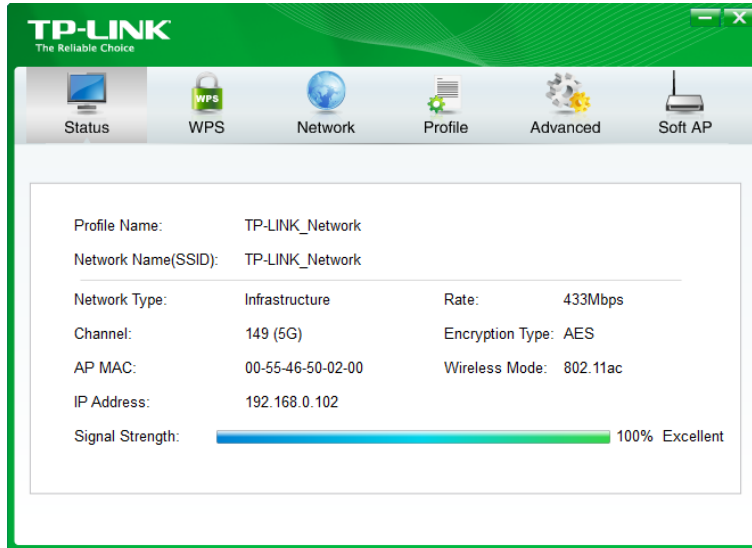
**About** - View your adapter's Utility version and its Driver version.

Open the TP-LINK Utility  and click the **Status**, **Profile** or **Advanced** tab to manage the corresponding section of your adapter.

### 3.3.1 Status

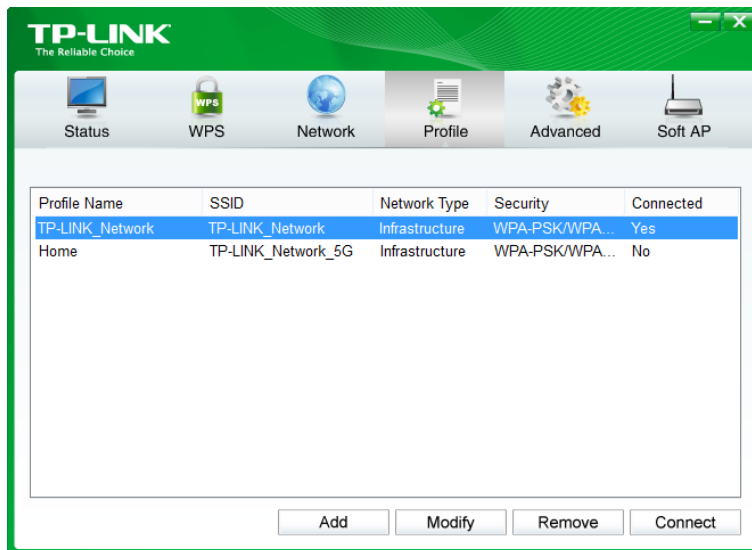
You can view the IP address and MAC address of the adapter, the signal strength of the Wi-Fi

network, and other information of the network status as shown in the following figure.



### 3.3.2 Profile

The **Profile** screen lets you save and manage different Wi-Fi network connection settings as profiles so that you can quickly and simply connect to your network. Moreover, you can join a hidden Wi-Fi network that does not broadcast its SSID by adding a profile, provided that you know its wireless settings, such as SSID, security type, and encryption type. For more details, please refer to the instructions below: [To add a new profile](#), [To join a Wi-Fi network](#), [To manage an existing profile](#).



#### ➤ To add a new profile

1. Click the **Add** button, and then a new window will open.
2. Complete the settings as shown in the following figure, and click **Save**.

The screenshot shows a configuration window for a network profile. The fields are as follows:

- Profile Name: Home
- SSID: TP-LINK\_Network\_5G
- Network Type: Infrastructure (selected), ad hoc
- Security Type: WPA-PSK/WPA2-PSK
- Encryption Type: TKIP/AES
- Security Key: \*\*\*\*\*
- Start this connection automatically:

Buttons: Save, Cancel

**Profile Name** - Enter a name for your profile, such as Home, Office, Coffeehouse. Do not enter the profile name that already exists.

**SSID** - Select your Wi-Fi network from the drop-down list or enter your Wi-Fi network name manually.

**Network Type** - Select **Infrastructure** if you want to connect to a wireless router or an access point. Select **ad hoc** if you want to connect to another wireless client, such as an adapter.

- **Infrastructure**

If you select **Infrastructure**, you are asked to select or enter the corresponding wireless settings, which should be the same as those of your Wi-Fi network.

- **ad hoc**

If you select **ad hoc**, you are asked to configure the wireless settings for your network, including choosing the operating frequency band, the security type, the encryption type and setting a security key.

The screenshot shows a configuration window for a network profile. The fields are as follows:

- Profile Name: Home 2
- SSID: TP-LINK\_263E\_5G
- Network Type: Infrastructure, ad hoc (selected)
- Security Type: WEP
- Encryption Type: Open
- Key Index: 1
- Key Format: ASCII\_64
- Security Key: \*\*\*\*\*
- Start this connection automatically:

Buttons: Save, Cancel

**Note:**

As for **Key Index**, you can select ASCII or Hexadecimal format from the drop-down list.

**ASCII\_64** - Please enter 5 ASCII characters.

**ASCII\_128** - Please enter 13 ASCII characters.

**Hexadecimal\_64** - Please enter 10 Hexadecimal digits (any combination of 0-9, a-f, A-F, excluded space).

**Hexadecimal\_128** - Please enter 26 Hexadecimal digits (any combination of 0-9, a-f, A-F, excluded space).

➤ **To join a Wi-Fi network**

If you want to join a Wi-Fi network that listed in the profile screen, select the profile and click **Connect** button in the bottom right corner.

➤ **To manage an existing profile**

If you want to change the name or the wireless settings of an existing profile, select it and click the **Modify** button in the bottom right corner of the Profile screen, then you can edit the settings of this profile. If you want to delete a profile that you no longer use, select it and click the **Remove** button.

### 3.3.3 Advanced



**Select wireless configuration tool** - In Windows XP. You can either use TP-LINK Utility or Windows wireless configuration tool. While in other operating systems, since you can use both TP-LINK Utility and Windows wireless configuration tool at the same time, this function is disabled.

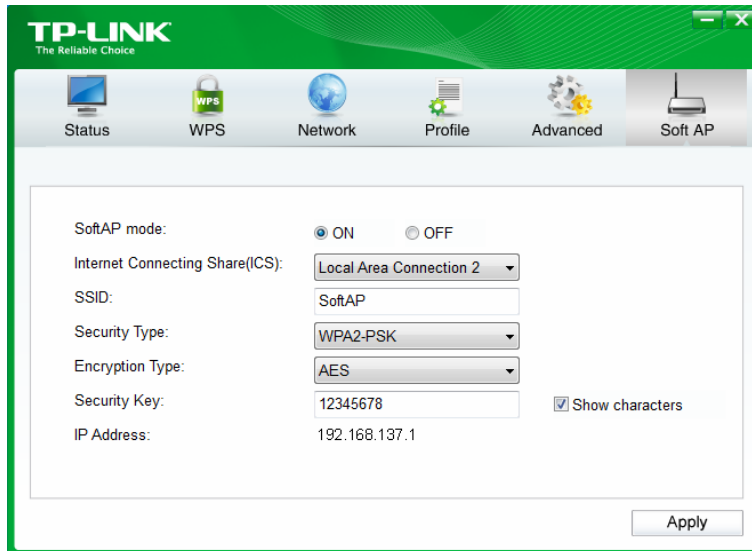
**Wireless network adapter switch** - If you've installed several adapters in your computer, you can switch to another adapter among the drop-down list.

**Power Save mode** - Once **ON** is selected, the adapter will automatically reduce its power consumption when not being used.

### 3.3.4 SoftAP


SoftAP is short for Software enabled Access Point. When the adapter works in SoftAP mode, it allows the computer to create a wireless hotspot that other wireless devices nearby can use.

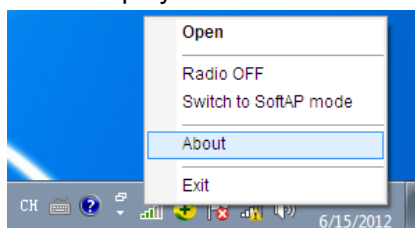
To switch to SoftAP mode, click the **SoftAP** tab, select **ON**, and complete the settings, then click **Apply** for the settings to take effect.



- **Soft AP mode:** Select **ON** or **OFF** to enable or disable this function.
- **Internet Connecting Share(ICS):** Select a network connection that can access to the Internet from the drop-down list. For example, if your computer is connecting to the Internet via an Ethernet cable, you should select the corresponding **Local Area Connection** so as to share the network with other wireless devices.
- **SSID:** Set a name for the wireless network shared by your adapter. The default is SoftAP.
- **Security Type:** The security type here is set to be WPA2-PSK which is based on 802.11i and uses AES (Advanced Encryption Standard).
- **Encryption Type:** The encryption type here is set to be AES.
- **Security Key:** Set a security key for the wireless network that shared by your adapter. It is recommended that you specify another key instead of the default key 12345678. When another wireless device connects to the network shared by your adapter, it will be asked to enter the corresponding security key.
- **IP Address:** Displays the IP address of the adapter when it works in SoftAP mode. You can also check if the network shared by your adapter is working properly by checking this IP Address. For example, if the IP Address is 0.0.0.0, it means that the Internet connection is failed.

### 3.3.5 About

You can view the adapter's information in the **About** screen, such as the UI version (Utility version) and the Driver version. Right-click  (TP-LINK Utility icon) in the system tray and select **About**, then the About screen displays.



### 3.4 Uninstall Driver and Utility

The software uninstallation steps vary a bit in different systems, please follow the appropriate instructions for your Windows operating system: [Windows 8/8.1](#), [Windows XP/7](#).

- **Windows 8/8.1**

Uninstall driver:

Go to **Start > Apps**, and find the **TP-LINK** application. Click **Uninstall - TP-LINK Archer T1U Driver**, then follow the on-screen instructions to complete the uninstallation.

Uninstall utility:

Go to **Start > Apps**, and find the **TP-LINK** application. Click **Uninstall - TP-LINK Wireless Configuration Utility**, then follow the on-screen instructions to complete the uninstallation.

- **Windows XP/7**

Uninstall driver:

Go to **Start > All Programs > TP-LINK > Uninstall - TP-LINK Archer T1U Driver**. Follow the on-screen instructions to complete the uninstallation.

Uninstall utility:

Go to **Start > All Programs > TP-LINK > Uninstall - TP-LINK Wireless Configuration Utility**. Follow the on-screen instructions to complete the uninstallation.

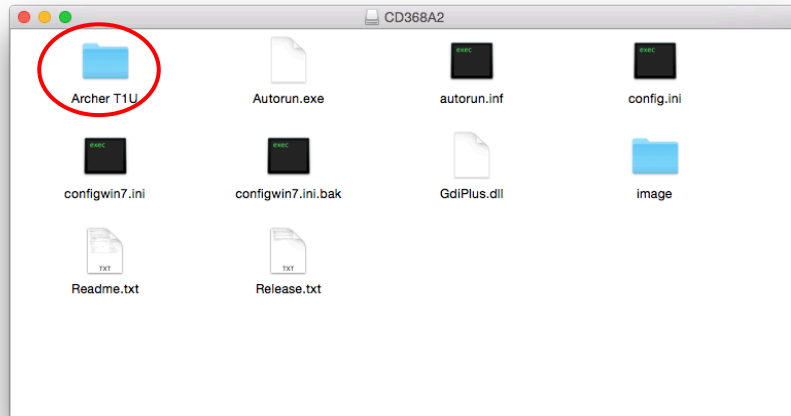


## Chapter 4 Mac OS X

### 4.1 Install Driver and Utility

We take the procedures in Mac OS X 10.10 as an example - the procedures may vary slightly for other versions of Mac OS.

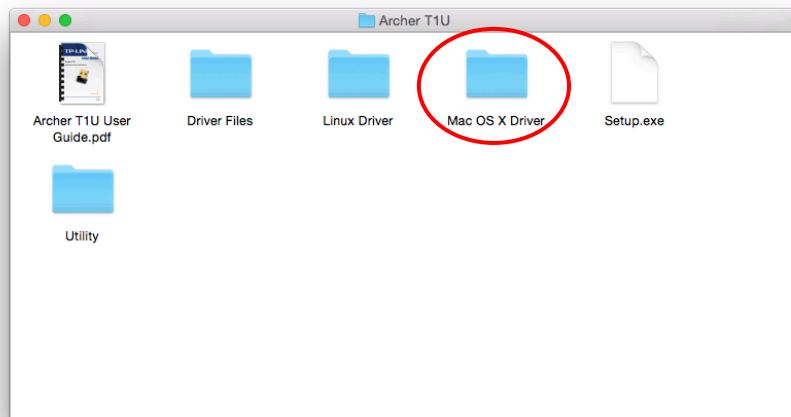
1. Insert the CD and run it manually. Open the **Archer T1U** folder.



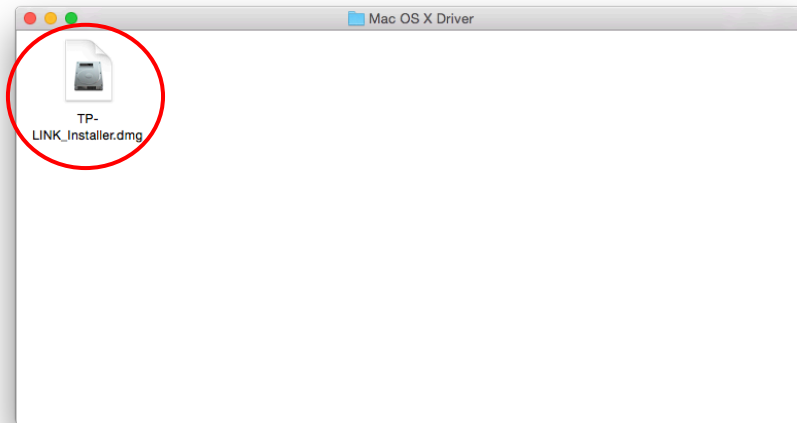
 **Note:**

The CD is included in the package. If your CD does not work or your computer doesn't support the CD, you can also download the driver and utility from the TP-LINK website ([www.tp-link.com](http://www.tp-link.com)).

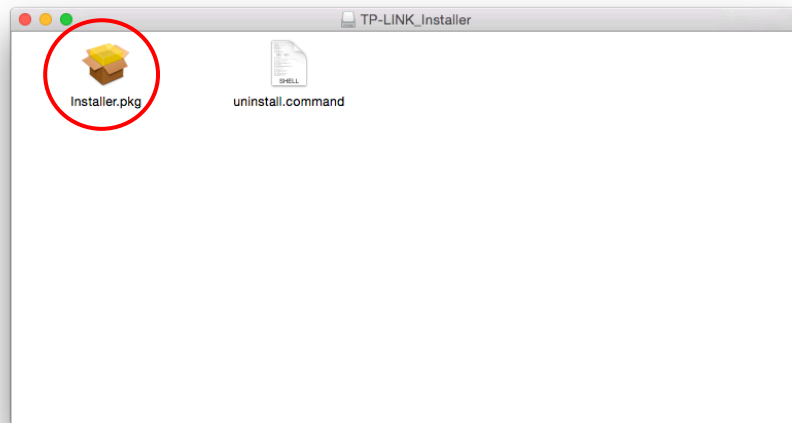
2. Open the **Mac OS X Driver** folder.



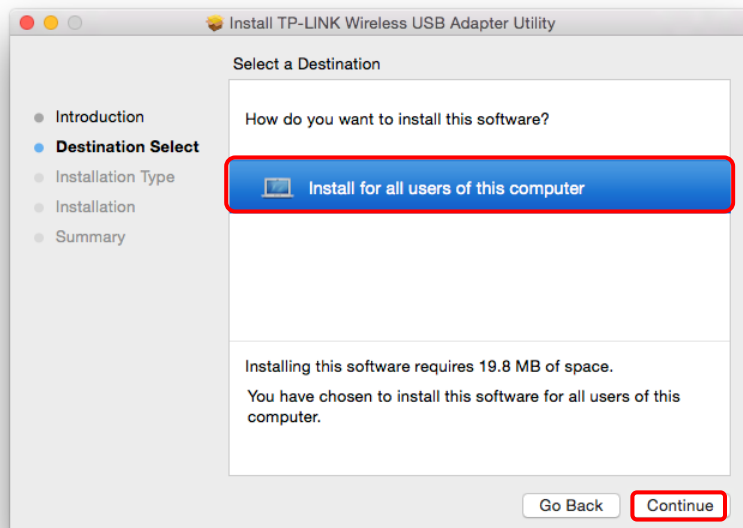
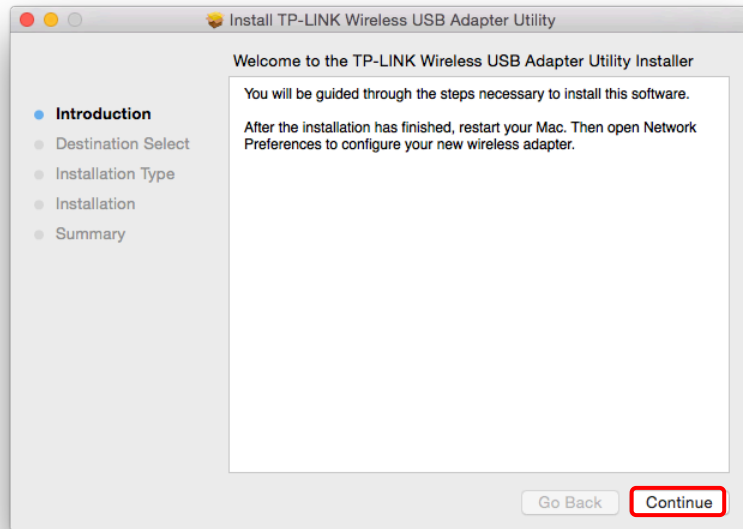
3. Double-click the **TP-LINK\_Installer.dmg** file.

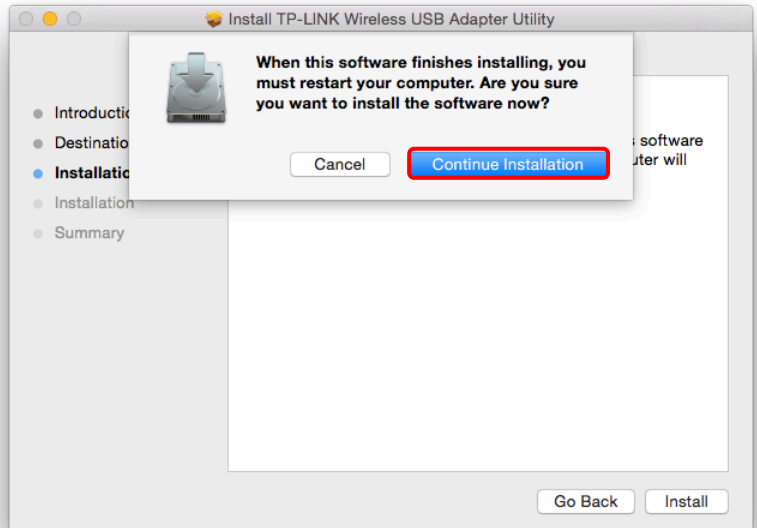
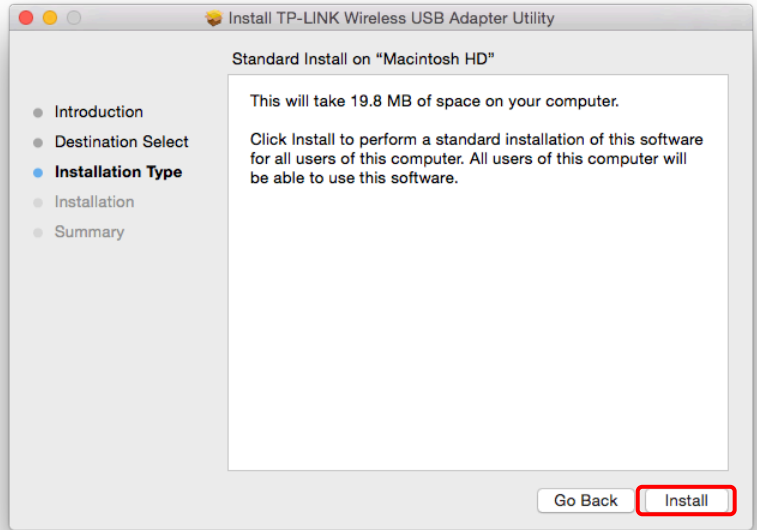


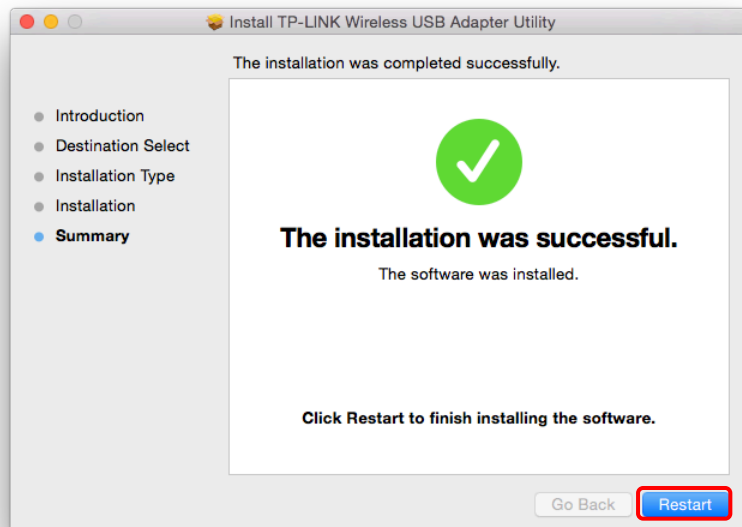
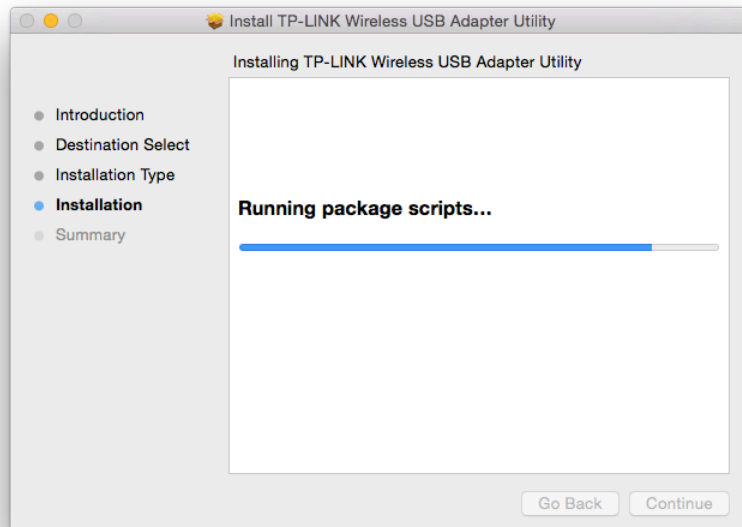
4. Double click the **Installer.pkg** file to open the installation wizard.



5. The **Install TP-LINK Wireless USB Adapter Utility** window will appear. Click **Continue** and follow the wizard to continue the installation.







6. After restarting the computer, the TP-LINK utility will pop up automatically. You can use the utility to join a Wi-Fi network with your adapter. For more guidance, please refer to [Join a Wireless Network](#).

 **Note:**

If the TP-LINK Utility does not pop up automatically, make sure the USB wireless network adapter is connected properly and the LED is on.

## 4.2 Join a Wireless Network

There are two options of using the adapter to join a Wi-Fi network.

### Option 1: [TP-LINK Utility](#)

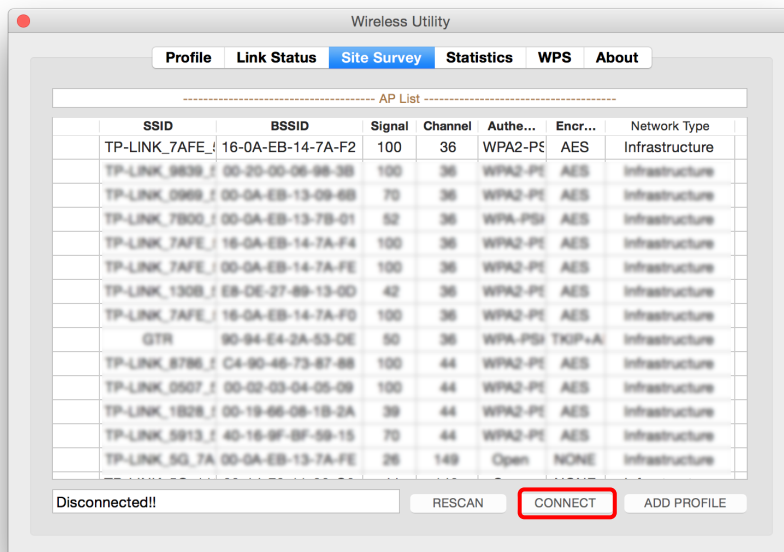
TP-LINK Utility lets you easily connect the adapter to a Wi-Fi network and manage the adapter.

**Option 2: [WPS \(Wi-Fi Protected Setup\)](#)**

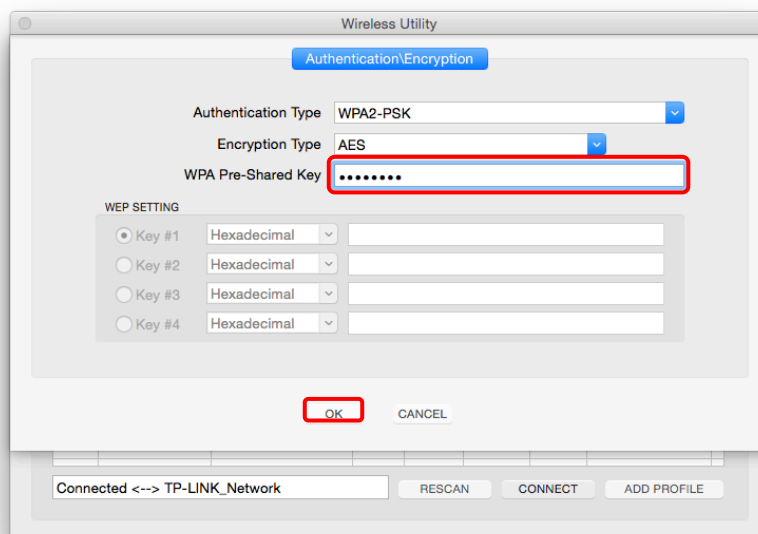
WPS (Wi-Fi Protected Setup) is a network security standard for easily adding computers and other devices to a home network. Use this method if your wireless router or access point supports WPS.


**4.2.1 TP-LINK Utility**

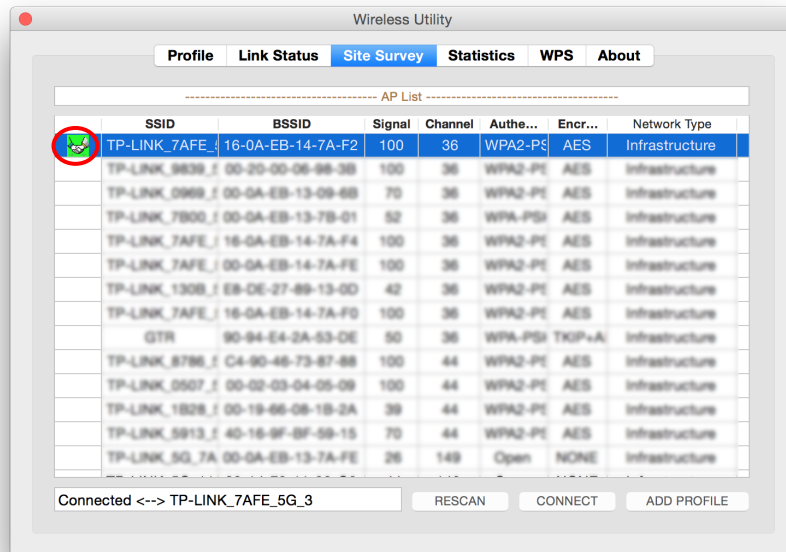
1. Open the TP-LINK Utility  and select **Site Survey** tab. Then select the network you want to join from the list and click **CONNECT**.



2. The **Authentication\Encryption** screen displays. If your network uses wireless security, you will be prompted to enter the Wi-Fi password of the network. Then click **OK**.



- After successfully connecting to your network, you will see a symbol  in front of your network's SSID, which indicates a successful connection.

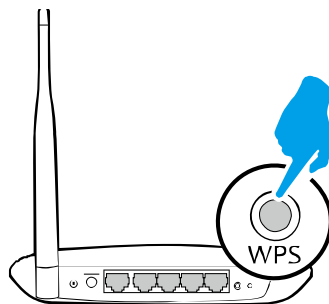


#### 4.2.2 WPS (Wi-Fi Protected Setup)

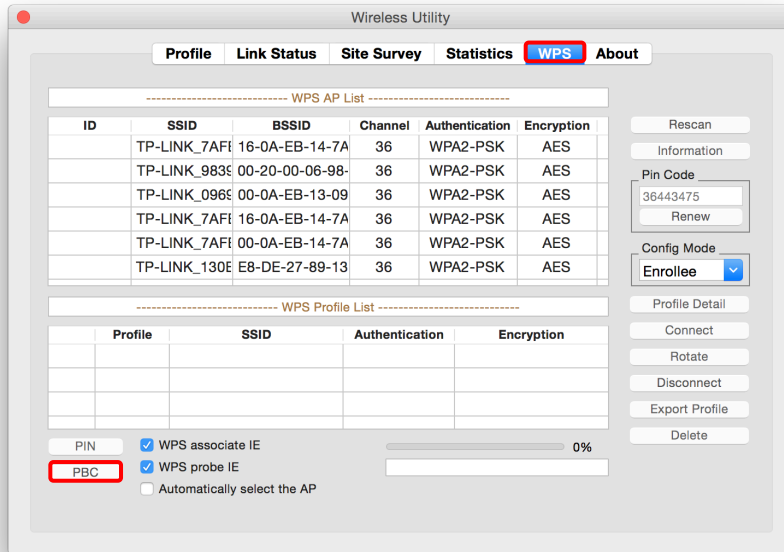
WPS can be activated via PBC (Push Button Configuration) and PIN. Please refer to [PBC](#) or [PIN](#) below.

➤ **PBC**

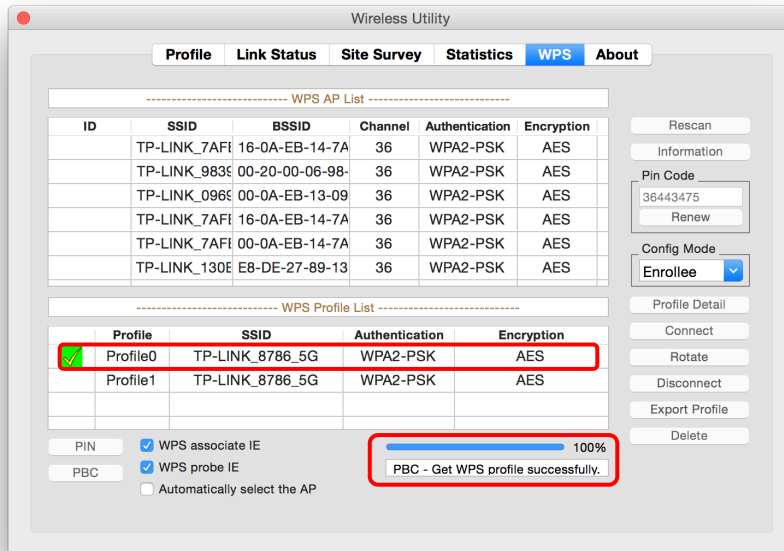
- Press the **WPS/QSS** button on your router or AP.



- Within 2 minutes, open TP-LINK Utility, click **WPS** tab, and click **PBC**.



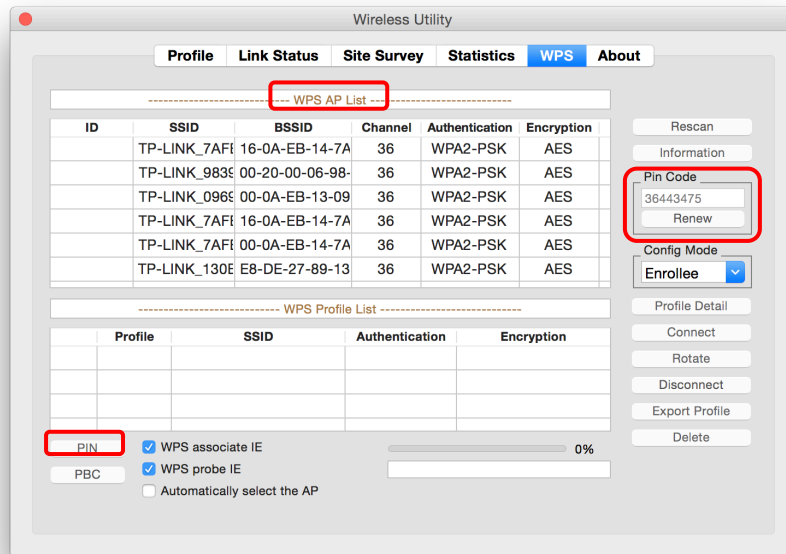
3. The following screen indicates a successful connection by WPS.



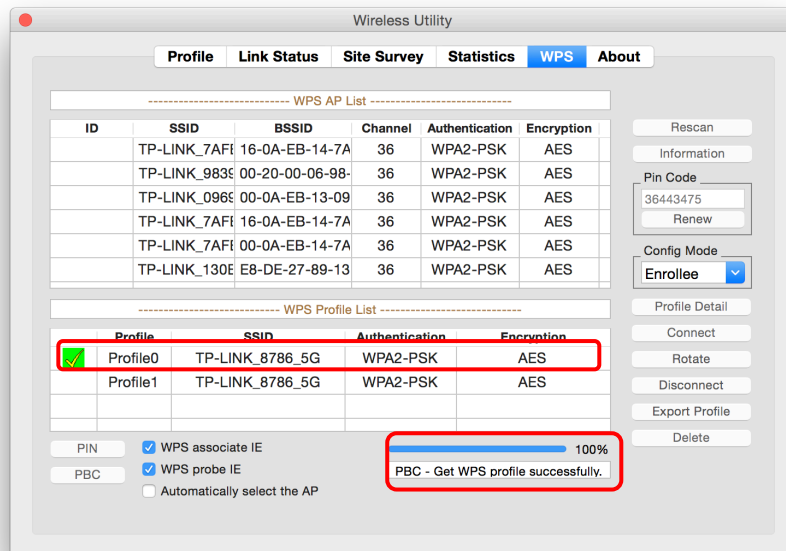
➤ **PIN**

1. Open TP-LINK Utility and click **WPS** tab. Mark down the PIN displayed on the screen. Select the network you want to join from the **WPS AP List**, then click **PIN**.





2. Within 2 minutes, log in to the Web Management page of your router or AP. Go to its **WPS** page, enter the PIN of the adapter in the corresponding field and click **Connect**.
3. The following screen indicates a successful connection by WPS.




### 4.3 Management

TP-LINK Utility provides you with an easy way to manage your adapter. It includes the following sections:

**Link Status** - View the information of the current Wi-Fi network connection and of the adapter.

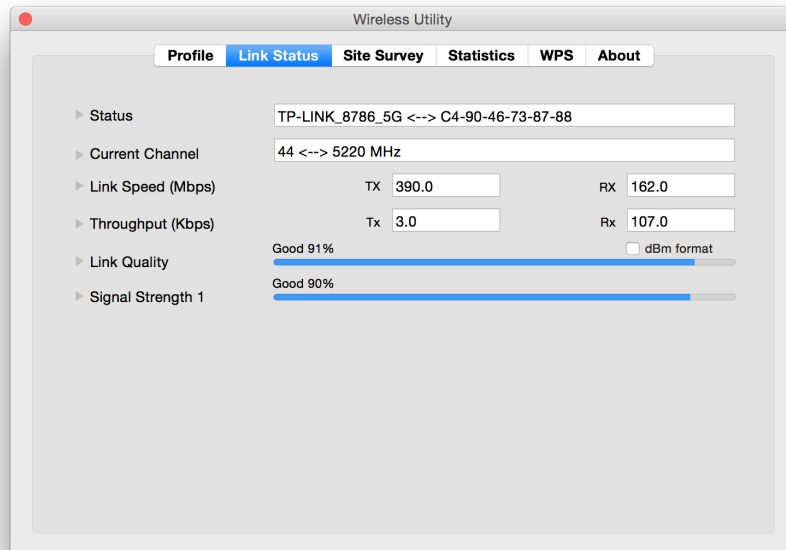
**Profile** - Save or manage various Wi-Fi network connection settings.

**About** - View the utility version and the driver version of your adapter.

Open the TP-LINK Utility  and click the **Link Status** or **Profile** tab to manage the corresponding section of your adapter.

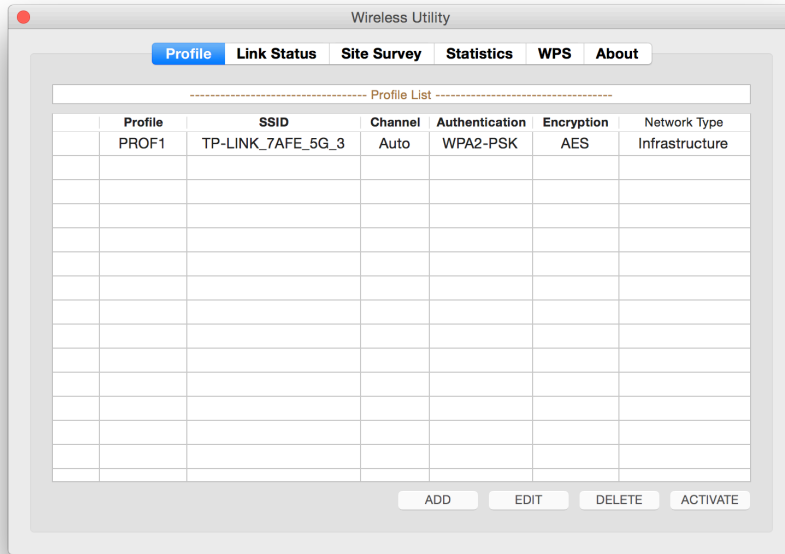
### 4.3.1 Link Status

You can view the current channel, the link quality and signal strength of the Wi-Fi network, and other information of the link status as shown in the following figure.



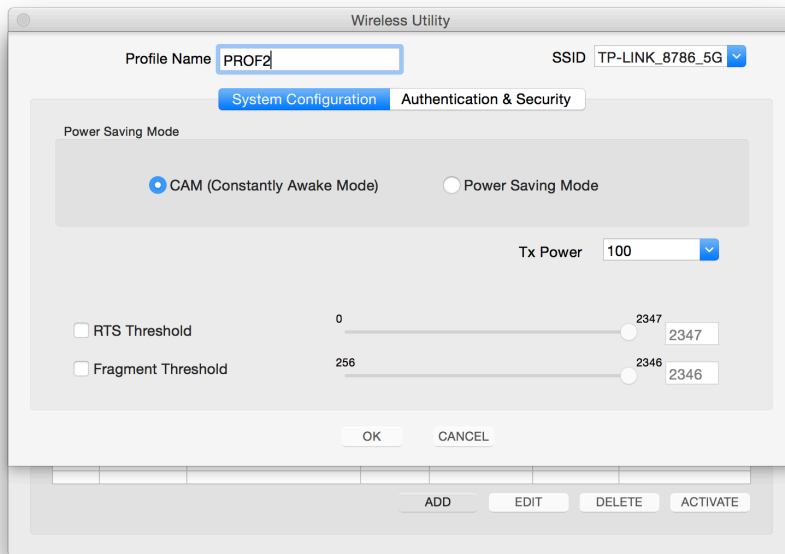
### 4.3.2 Profile

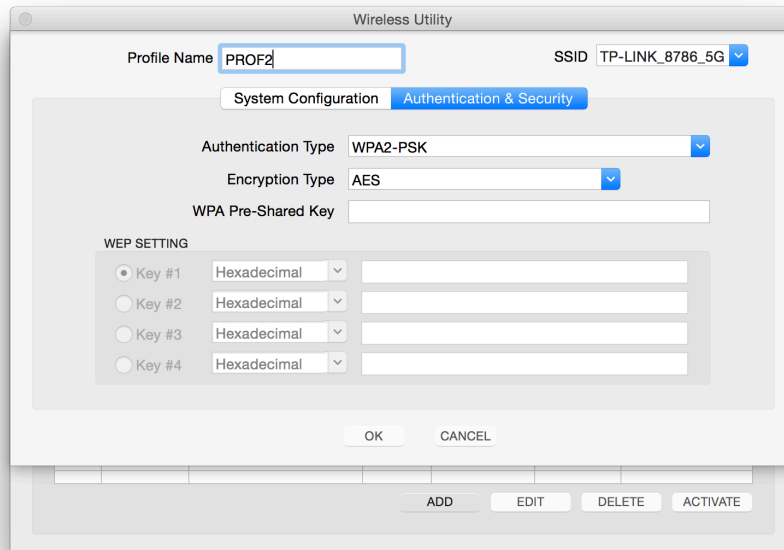
The **Profile** screen lets you save and manage different Wi-Fi network connection settings as profiles so that you can connect to your network quickly and conveniently. Moreover, you can join a hidden Wi-Fi network that does not broadcast its SSID by adding a profile, provided that you know its wireless settings, such as SSID, security type, and encryption type. For details, please refer to the instructions below: [To add a new profile](#), [To join a Wi-Fi network](#), [To manage an existing profile](#).



➤ **To add a new profile**

1. Click the **Add** button, and then a new window will open.
2. Complete the settings as shown in the following figure, and click **OK**.





**Profile Name** - Enter a name for your profile, such as Home, Office, Coffeehouse. Do not enter the profile name that already exists.

**SSID** - Enter the name of your Wi-Fi network.

#### System Configuration:

Select **CAM (Constantly Awake Mode)** or **Power Saving Mode** depending on your preference. In **Power Saving Mode**, the adapter will automatically reduce its power consumption when not being used.

You can specify the **Tx Power** level to adjust the transmit power of the adapter. A lower level will reduce performance, but it decreases interference in the local network environment.

#### **Note:**

It is recommended to keep the default values for the settings of **RTS Threshold** and **Fragment Threshold**. Advanced users can make adjustments if necessary.

#### Authentication & Security:

Select or enter the corresponding wireless settings, including **Authentication Type**, **Encryption Type** and **WPS Pre-Shared Key**, which should be the same as those of your Wi-Fi network.

#### ➤ **To join a Wi-Fi network**

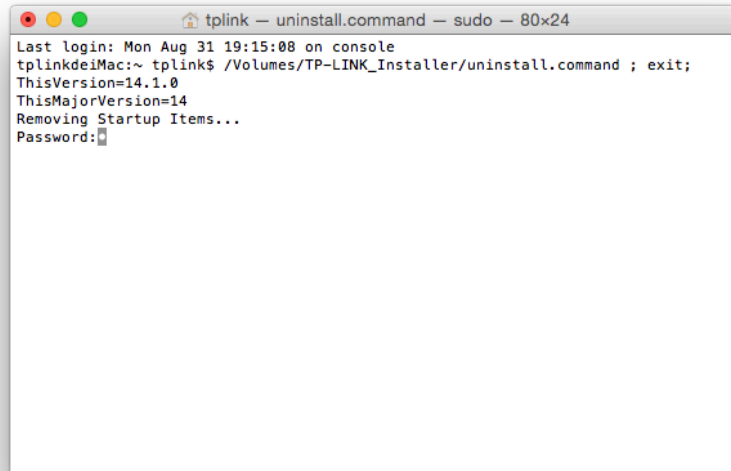
If you want to join a Wi-Fi network that listed in the profile screen, select the profile and click **ACTIVATE** button in the bottom right corner.

#### ➤ **To manage an existing profile**

If you want to change the name or the wireless settings of an existing profile, select it and click the **EDIT** button, then you can edit the settings of this profile. If you want to delete a profile that you no longer use, select it and click the **DELETE** button.

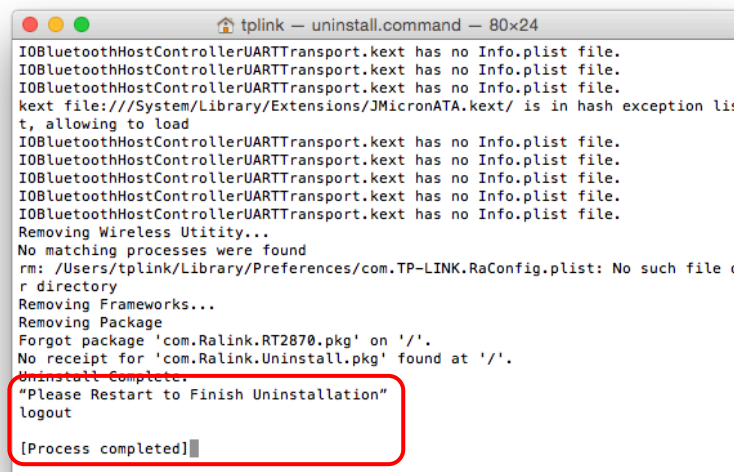
## 4.4 Uninstall Driver and Utility

1. Insert the CD and run it manually.
2. Go to **Archer T1U > Mac OS X Driver > TP-LINK\_Installer.dmg > uninstall.command**.
3. As shown in the figure below, a command window will pop up. Please type the password of the root user to uninstall the software.



```
tplink -- uninstall.command -- sudo -- 80x24
Last login: Mon Aug 31 19:15:08 on console
tplinkdeMac:~ tplink$ /Volumes/TP-LINK_Installer/uninstall.command ; exit;
ThisVersion=14.1.0
ThisMajorVersion=14
Removing Startup Items...
Password:
```

4. Wait till the **“Process completed”** shows up, then restart your computer to finish the uninstallation.



```
tplink -- uninstall.command -- 80x24
IOBluetoothHostControllerUARTTransport.kext has no Info.plist file.
IOBluetoothHostControllerUARTTransport.kext has no Info.plist file.
IOBluetoothHostControllerUARTTransport.kext has no Info.plist file.
kext file:///System/Library/Extensions/JMicronATA.kext/ is in hash exception list, allowing to load
IOBluetoothHostControllerUARTTransport.kext has no Info.plist file.
IOBluetoothHostControllerUARTTransport.kext has no Info.plist file.
IOBluetoothHostControllerUARTTransport.kext has no Info.plist file.
IOBluetoothHostControllerUARTTransport.kext has no Info.plist file.
IOBluetoothHostControllerUARTTransport.kext has no Info.plist file.
IOBluetoothHostControllerUARTTransport.kext has no Info.plist file.
Removing Wireless Utility...
No matching processes were found
rm: /Users/tplink/Library/Preferences/com.TP-LINK.RaConfig.plist: No such file or directory
Removing Frameworks...
Removing Package
Forgot package 'com.Ralink.RT2870.pkg' on '/'.
No receipt for 'com.Ralink.Uninstall.pkg' found at '/'.
Uninstall Complete.
"Please Restart to Finish Uninstallation"
logout
[Process completed]
```

 **Note:**

The CD is included in the package. If your CD does not work or your computer doesn't support the CD, you can also download the driver and utility from the TP-LINK website ([www.tp-link.com](http://www.tp-link.com)).

## Chapter 5 Linux

Please visit the TP-LINK support website, find and download the compatible version of driver for your Archer T1U at [www.tp-link.com](http://www.tp-link.com).

## Appendix A: Specifications

Normal	
Interface	USB 2.0 Interface
Standards	IEEE802.11a; IEEE802.11n; IEEE802.11ac; IEEE802.1x; IEEE802.11e; IEEE802.11i
Operating System	Windows XP, Windows 7, Windows 8, Windows 8.1 Mac OS X 10.7–10.10 Linux
Throughput	5GHz: 433Mbps (Maximal)
Data Security	WEP, WPA / WPA2, WPA-PSK / WPA2-PSK
Frequency*	5.180~5.240GHz, 5.260~5.320GHz, 5.500~5.700GHz, 5.745~5.825GHz

Environmental and Physical	
Working Temperature	0°C~40°C (32°F~104°F)
Storage Temperature	-40°C~70°C (-40°F~158°F)
Working Humidity	10% ~ 90% RH, Non-condensing
Storage Humidity	5% ~ 90% RH, Non-condensing

\* Rules on the use of 5GHz band channels may vary according to different national laws.

## Appendix B: Glossary

- **802.11ac** - IEEE 802.11ac is a wireless computer networking standard of 802.11. This specification will enable multi-station WLAN throughput of at least 1 gigabit per second. This is accomplished by extending the air interface concepts embraced by 802.11n: wider RF bandwidth, more MIMO spatial streams, multi-user MIMO, and high-density modulation (up to 256 QAM).
- **802.11n** - 802.11n builds upon previous 802.11 standards by adding MIMO (multiple-input multiple-output). MIMO uses multiple transmitter and receiver antennas to allow for increased data throughput via spatial multiplexing and increased range by exploiting the spatial diversity, perhaps through coding schemes like Alamouti coding. The Enhanced Wireless Consortium (EWC) was formed to help accelerate the IEEE 802.11n development process and promote a technology specification for interoperability of next-generation wireless local area networking (WLAN) products.
- **802.11a** - Specification for wireless networking at 54 Mbps using OFDM modulation and operating in radio band at 5GHz.
- **Ad hoc Network** - An ad hoc network is a group of computers, each with a Wireless Adapter, connected as an independent 802.11 wireless LAN. Ad hoc wireless computers operate on a peer-to-peer basis, communicating directly with each other without the use of an access point. Ad hoc mode is also referred to as an Independent Basic Service Set (IBSS) or as peer-to-peer mode, and is useful at a departmental scale or SOHO operation.
- **Infrastructure Network** - An infrastructure network is a group of computers or other devices, each with a Wireless Adapter, connected as an 802.11 wireless LAN. In infrastructure mode, the wireless devices communicate with each other and to a wired network by first going through an access point. An infrastructure wireless network connected to a wired network is referred to as a Basic Service Set (BSS). A set of two or more BSS in a single network is referred to as an Extended Service Set (ESS). Infrastructure mode is useful at a corporation scale, or when it is necessary to connect the wired and wireless networks.
- **SSID** - A **S**ervice **S**et **I**dentification is a thirty-two character (maximum) alphanumeric key identifying a wireless local area network. For the wireless devices in a network to communicate with each other, all devices must be configured with the same SSID. This is typically the configuration parameter for a wireless PC card. It corresponds to the ESSID in the wireless Access Point and to the wireless network name. *See also* Wireless Network Name and ESSID.
- **WEP** - (**W**ired **E**quivalent **P**rivacy) - A data privacy mechanism based on a 64-bit or 128-bit or 152-bit shared key algorithm, as described in the IEEE 802.11 standard. To gain access to a WEP network, you must know the key. The key is a string of characters that you create. When using WEP, you must determine the level of encryption. The type of encryption determines the key length. 128-bit encryption requires a longer key than 64-bit encryption.



Keys are defined by entering in a string in HEX (hexadecimal - using characters 0-9, A-F) or ASCII (American Standard Code for Information Interchange – alphanumeric characters) format. ASCII format is provided so you can enter a string that is easier to remember. The ASCII string is converted to HEX for use over the network. Four keys can be defined so that you can change keys easily.

- **Wi-Fi** - A trade name for the 802.11b wireless networking standard, given by the Wireless Ethernet Compatibility Alliance (WECA, see <http://www.wi-fi.net>), an industry standards group promoting interoperability among 802.11b devices.
- **WPA - (Wi-Fi Protected Access)** - A wireless security protocol uses TKIP (Temporal Key Integrity Protocol) encryption, which can be used in conjunction with a RADIUS server.