



SM-T210

User Manual

About this manual

This device provides high quality mobile communication and entertainment using Samsung's high standards and technological expertise. This user manual is specially designed to detail the device's functions and features.

- Please read this manual before using the device to ensure safe and proper use.
- Descriptions are based on the device's default settings.
- Images and screenshots may differ in appearance from the actual product.
- Content may differ from the final product, or from software provided by service providers or carriers, and is subject to change without prior notice. For the latest version of the manual, refer to the Samsung website, www.samsung.com.
- Content (high quality content) that requires high CPU and RAM usage will affect the overall performance of the device. Applications related to the content may not work properly depending on the device's specifications and the environment that it is used in.
- Available features and additional services may vary by device, software, or service provider.
- Applications and their functions may vary by country, region, or hardware specifications. Samsung is not liable for performance issues caused by applications from any provider other than Samsung.
- Samsung is not liable for performance issues or incompatibilities caused by edited registry settings or modified operating system software. Attempting to customise the operating system may cause the device or applications to work improperly.
- Software, sound sources, wallpapers, images, and other media provided with this device are licensed for limited use. Extracting and using these materials for commercial or other purposes is an infringement of copyright laws. Users are entirely responsible for illegal use of media.

- Default applications that come with the device are subject to updates and may no longer be supported without prior notice. If you have questions about an application provided with the device, contact a Samsung Service Centre. For user-installed applications, contact service providers.
- Modifying the device's operating system or installing softwares from unofficial sources may result in device malfunctions and data corruption or loss. These actions are violations of your Samsung licence agreement and will void your warranty.

Instructional icons



Warning: situations that could cause injury to yourself or others



Caution: situations that could cause damage to your device or other equipment



Note: notes, usage tips, or additional information

Copyright

Copyright © 2014 Samsung Electronics

This guide is protected under international copyright laws.

No part of this guide may be reproduced, distributed, translated, or transmitted in any form or by any means, electronic or mechanical, including photocopying, recording, or storing in any information storage and retrieval system, without the prior written permission of Samsung Electronics.

Trademarks

- SAMSUNG and the SAMSUNG logo are registered trademarks of Samsung Electronics.
- Bluetooth® is a registered trademark of Bluetooth SIG, Inc. worldwide.
- Wi-Fi®, Wi-Fi Protected Setup™, Wi-Fi Direct™, Wi-Fi CERTIFIED™, and the Wi-Fi logo are registered trademarks of the Wi-Fi Alliance.
- All other trademarks and copyrights are the property of their respective owners.

DivX®, DivX Certified® and associated logos are trademarks of Rovi Corporation or its subsidiaries and are used under licence.



ABOUT DIVX VIDEO

DivX® is a digital video format created by DivX, LLC, a subsidiary of Rovi Corporation. This is an official DivX Certified® device that has passed rigorous testing to verify that it plays DivX video. Visit www.divx.com for more information and software tools to convert your files into DivX videos.

ABOUT DIVX VIDEO-ON-DEMAND

This DivX Certified® device must be registered in order to play purchased DivX Video-on-Demand (VOD) movies. To obtain your registration code, locate the DivX VOD section in your device setup menu. Go to vod.divx.com for more information on how to complete your registration.

DivX Certified® to play DivX® video up to HD 720p, including premium content.

Manufactured under licence from Dolby Laboratories. Dolby, Dolby Digital Plus, and the double-D symbol are trademarks of Dolby Laboratories.



Table of Contents

Getting started

- 7 Device layout
- 8 Buttons
- 9 Package contents
- 9 Charging the battery
- 12 Inserting a memory card
- 14 Turning the device on and off
- 14 Holding the device
- 15 Locking and unlocking the device
- 15 Adjusting the volume
- 15 Switching to silent mode

Basics

- 16 Indicator icons
- 17 Using the touch screen
- 20 Rotating the screen
- 21 Using Multi window
- 25 Notifications
- 26 Home screen
- 28 Locked screen
- 30 Applications screen
- 31 Using applications
- 32 Help
- 32 Entering text
- 34 Connecting to a Wi-Fi network
- 35 Setting up accounts

- 35 Setting up user profiles
- 36 Transferring files
- 37 Securing the device
- 38 Upgrading the device

Communication

- 39 Contacts
- 42 Email
- 44 Google Mail
- 45 Hangouts
- 46 Google+
- 46 Photos
- 47 ChatON

Web & network

- 48 Internet
- 49 Chrome
- 50 Bluetooth
- 51 Samsung Link
- 53 Group Play

Media

- 55 Music
- 56 Camera

- 62 Gallery
- 65 Video
- 66 YouTube
- 67 Flipboard

Application & media stores

- 68 Play Store
- 69 Samsung Apps
- 69 Play Books
- 70 Play Movies & TV
- 70 Play Music
- 70 Play Games
- 70 Play Newsstand

Utilities

- 71 Memo
- 72 S Planner
- 74 Drive
- 74 Dropbox
- 75 POLARIS Office 5
- 77 Alarm
- 78 World Clock
- 79 Calculator
- 79 S Voice
- 80 Google
- 81 Voice Search
- 81 My Files
- 82 Downloads

Travel & local

- 83 Maps

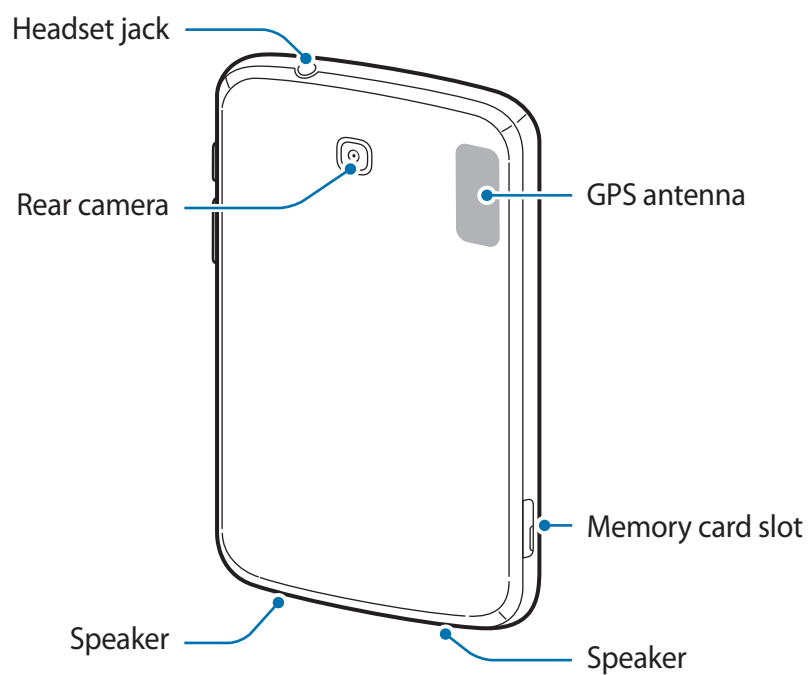
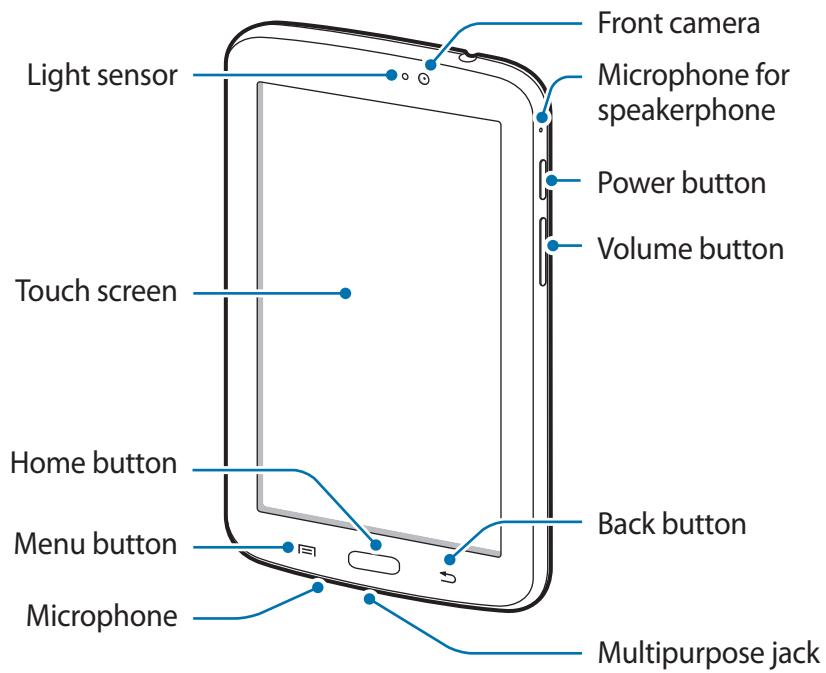
Settings

- 84 About Settings
- 84 Wi-Fi
- 85 Bluetooth
- 85 Data usage
- 86 More settings
- 86 Blocking mode
- 86 Hands-free mode
- 87 Sound
- 87 Display
- 88 Storage
- 88 Power saving mode
- 88 Battery
- 88 Application manager
- 88 Default applications
- 89 Users
- 89 Location
- 89 Lock screen
- 90 Security
- 91 Language and input
- 93 Backup and reset
- 93 Add account
- 94 Accessories
- 94 Date and time
- 94 Accessibility
- 95 About device
- 95 Google Settings

Troubleshooting

Getting started

Device layout


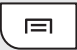





The microphone at the top of the device is active only when you use the speakerphone or take videos.



- Do not cover the antenna area with your hands or other objects. This may cause connectivity problems or drain the battery.
- Using a Samsung-approved screen protector is recommended. Unapproved screen protectors may cause the sensors to malfunction.
- Do not allow water to contact the touch screen. The touch screen may malfunction in humid conditions or when exposed to water.

Buttons

Button	Function
 Power	<ul style="list-style-type: none"> • Press and hold to turn the device on or off. • Press and hold for 8-10 seconds to reset the device if it has fatal errors or hang-ups, or freezes. • Press to lock or unlock the device. The device goes into lock mode when the touch screen turns off.
 Menu	<ul style="list-style-type: none"> • Tap to open a list of options available for the current screen. • Tap and hold on the Home screen to launch Google search.
 Home	<ul style="list-style-type: none"> • Press to return to the Home screen. • Press and hold to open the list of recent applications. • Press twice to launch S Voice.
 Back	<ul style="list-style-type: none"> • Tap to return to the previous screen.
 Volume	<ul style="list-style-type: none"> • Press to adjust the device volume.

Package contents

Check the product box for the following items:

- Device
- Quick start guide



- The items supplied with the device and any available accessories may vary depending on the region or service provider.
- The supplied items are designed only for this device and may not be compatible with other devices.
- Appearances and specifications are subject to change without prior notice.
- You can purchase additional accessories from your local Samsung retailer. Make sure they are compatible with the device before purchase.
- Other accessories may not be compatible with your device.
- Use only Samsung-approved accessories. Malfunctions caused by using unapproved accessories are not covered by the warranty service.
- Availability of all accessories is subject to change depending entirely on manufacturing companies. For more information about available accessories, refer to the Samsung website.

Charging the battery

Use the charger to charge the battery before using it for the first time.



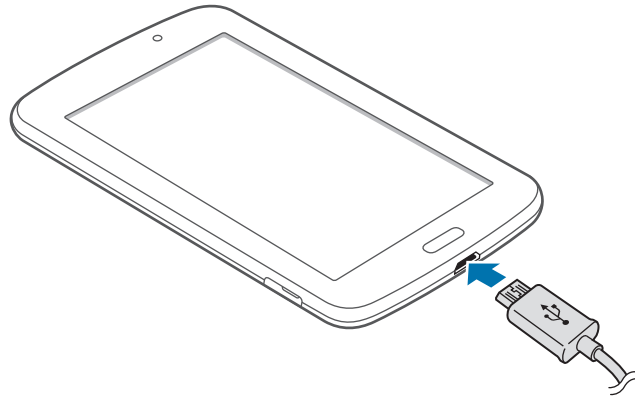
Use only Samsung-approved chargers, batteries, and cables. Unapproved chargers or cables can cause the battery to explode or damage the device.



- When the battery power is low, the device emits a warning tone and displays a low battery power message.
- If the battery is completely discharged, the device cannot be turned on immediately when the charger is connected. Allow a depleted battery to charge for a few minutes before turning on the device.
- If you use multiple applications at once, network applications, or applications that need a connection to another device, the battery will drain quickly. To avoid disconnecting from the network or losing power during a data transfer, always use these applications after fully charging the battery.

Charging with the charger

Connect the USB cable to the USB power adaptor and then plug the end of the USB cable into the multipurpose jack.



Connecting the charger improperly may cause serious damage to the device. Any damage caused by misuse is not covered by the warranty.



- The device can be used while it is charging, but it may take longer to fully charge the battery.
- If the device receives an unstable power supply while charging, the touch screen may not function. If this happens, unplug the charger from the device.
- While charging, the device may heat up. This is normal and should not affect the device's lifespan or performance. If the battery gets hotter than usual, the charger may stop charging.
- If the device is not charging properly, take the device and the charger to a Samsung Service Centre.

After fully charging, disconnect the device from the charger. First unplug the charger from the device, and then unplug it from the electric socket.



To save energy, unplug the charger when not in use. The charger does not have a power switch, so you must unplug the charger from the electric socket when not in use to avoid wasting power. The charger should remain close to the electric socket and easily accessible while charging.

Checking the battery charge status

When you charge the battery while the device is off, the following icons will show the current battery charge status:



Reducing the battery consumption

Your device provides options that help you save battery power. By customising these options and deactivating features in the background, you can use the device longer between charges:

- When you are not using the device, switch to sleep mode by pressing the Power button.
- Close unnecessary applications with the task manager.
- Deactivate the Bluetooth feature.
- Deactivate the Wi-Fi feature.
- Deactivate auto-syncing of applications.
- Decrease the backlight time.
- Decrease the brightness of the display.

Inserting a memory card

Your device accepts memory cards with maximum capacities of 32 GB. Depending on the memory card manufacturer and type, some memory cards may not be compatible with your device.

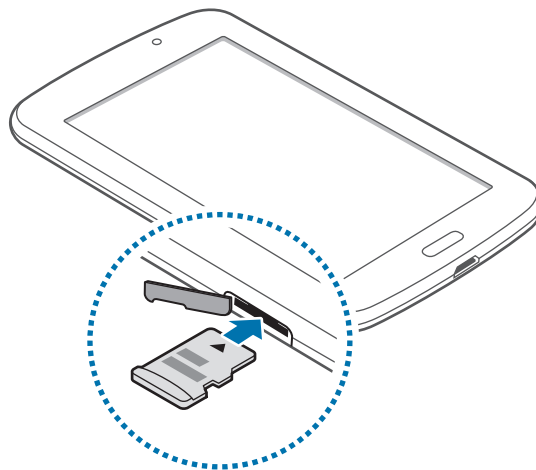


- Some memory cards may not be fully compatible with the device. Using an incompatible card may damage the device or the memory card, or corrupt the data stored in it.
- Use caution to insert the memory card right-side up.



- The device supports only the FAT file system for memory cards. When inserting a card formatted in a different file system, the device asks to reformat the memory card.
- Frequent writing and erasing of data shortens the lifespan of memory cards.
- When inserting a memory card into the device, the memory card's file directory appears in the **My Files** → **SD memory card** folder.

- 1 Open the cover of the memory card slot.
- 2 Insert a memory card with the gold-coloured contacts facing downwards.
- 3 Push the memory card into the slot until it locks in place.



- 4 Close the cover of the memory card slot.

Removing the memory card

Before removing the memory card, first unmount it for safe removal. On the Home screen, tap **Apps** → **Settings** → **Storage** → **Unmount SD card**.

Push the memory card until it disengages from the device, and then pull it out.



Do not remove the memory card while the device is transferring or accessing information. Doing so can cause data to be lost or corrupted or damage to the memory card or device. Samsung is not responsible for losses that result from the misuse of damaged memory cards, including the loss of data.

Formatting the memory card

A memory card formatted on a computer may not be compatible with the device. Format the memory card on the device.

On the Home screen, tap **Apps** → **Settings** → **Storage** → **Format SD card** → **Format SD card** → **Erase everything**.

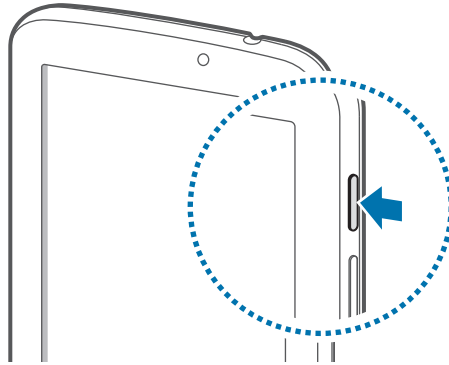


Before formatting the memory card, remember to make backup copies of all important data stored on the device. The manufacturer's warranty does not cover loss of data resulting from user actions.

Turning the device on and off

When turning on the device for the first time, follow the on-screen instructions to set up your device.

Press and hold the Power button for a few seconds to turn on the device.



- Follow all posted warnings and directions from authorised personnel in areas where the use of wireless devices is restricted, such as aeroplanes and hospitals.
- Press and hold the Power button and tap **Flight mode** to disable the wireless features.

To turn off the device, press and hold the Power button, and then tap **Power off**.

Holding the device

Do not cover the antenna area with your hands or other objects. This may cause connectivity problems or drain the battery.

Locking and unlocking the device

When not in use, lock the device to prevent unwanted operation. Pressing the Power button turns off the screen and puts the device into lock mode. The device automatically gets locked if it is not used for a specified period.

To unlock the device, press the Power button or the Home button and flick your finger in any direction within the unlock screen area at the lower part of the screen.

Adjusting the volume

Press the Volume button up or down to adjust the ringtone volume, or to adjust the sound volume when playing music or video.

Switching to silent mode











Use one of the following methods:

- Press and hold the Volume button down until it switches to silent mode.
- Press and hold the Power button, and then tap **Mute**.
- Open the notifications panel at the top of the screen, and then tap **Sound**.

Basics

Indicator icons

The icons displayed at the top of the screen provide information about the status of the device. The icons listed in the table below are most common.

Icon	Meaning
	Wi-Fi connected
	Bluetooth feature activated
	GPS activated
	Synced with the web
	Connected to computer
	Alarm activated
	Silent mode activated
	Flight mode activated
	Error occurred or caution required
	Battery power level

Using the touch screen

Use only fingers to use the touch screen.



- Do not allow the touch screen to come into contact with other electrical devices. Electrostatic discharges can cause the touch screen to malfunction.
- To avoid damaging the touch screen, do not tap it with anything sharp or apply excessive pressure to it with your fingertips.

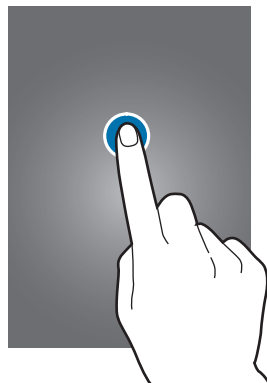


- The device may not recognise touch inputs close to the edges of the screen, which are outside of the touch input area.
- Leaving the touch screen idle for extended periods may result in afterimages (screen burn-in) or ghosting. Turn off the touch screen when you do not use the device.

Finger gestures

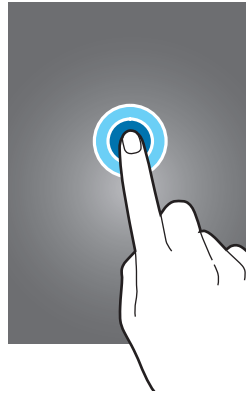
Tapping

To open an application, to select a menu item, to press an on-screen button, or to enter a character using the on-screen keyboard, tap it with a finger.



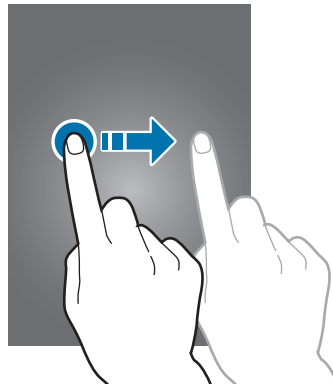
Tapping and holding

Tap and hold an item for more than 2 seconds to access available options.



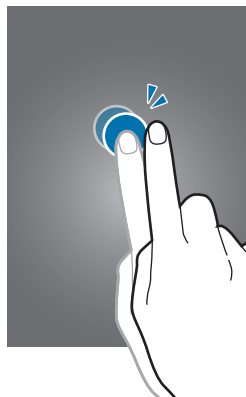
Dragging

To move an icon, thumbnail, or preview to a new location, tap and hold it and drag it to the target position.



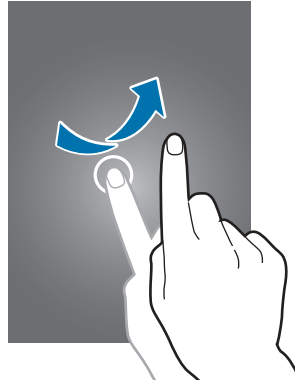
Double-tapping

Double-tap on a webpage or image to zoom in a part. Double-tap again to return.



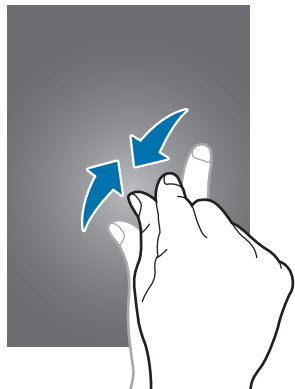
Flicking

Flick left or right on the Home screen or the Applications screen to see another panel. Flick up or down to scroll through a webpage or a list, such as contacts.



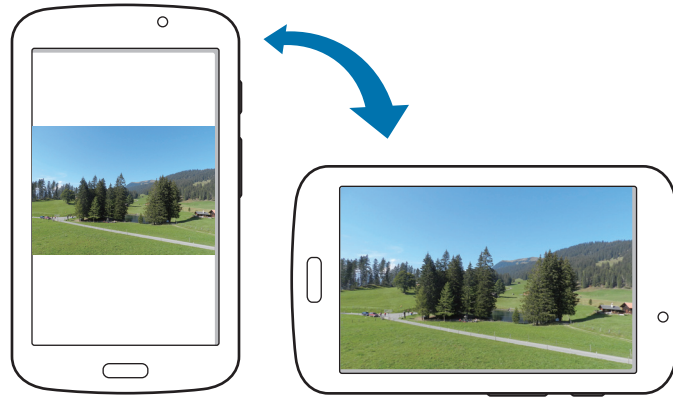
Pinching

Spread two fingers apart on a webpage, map, or image to zoom in a part. Pinch to zoom out.



Rotating the screen

Many applications allow display in either portrait or landscape orientation. Rotating the device causes the display to automatically adjust to fit the new screen orientation.



To prevent the display from rotating automatically, open the notifications panel and deselect **Screen rotation**.



- Some applications do not allow screen rotation.
- Some applications display a different screen depending on the orientation. The calculator turns into a scientific calculator when rotated to landscape.

Using Multi window

Use this feature to run multiple applications on the screen at the same time.



- Only applications on the Multi window tray can run.
- This feature may not be available depending on the region or service provider.

To use Multi window, on the Home screen, tap **Apps** → **Settings** → **Display**, and then tick **Multi window**.

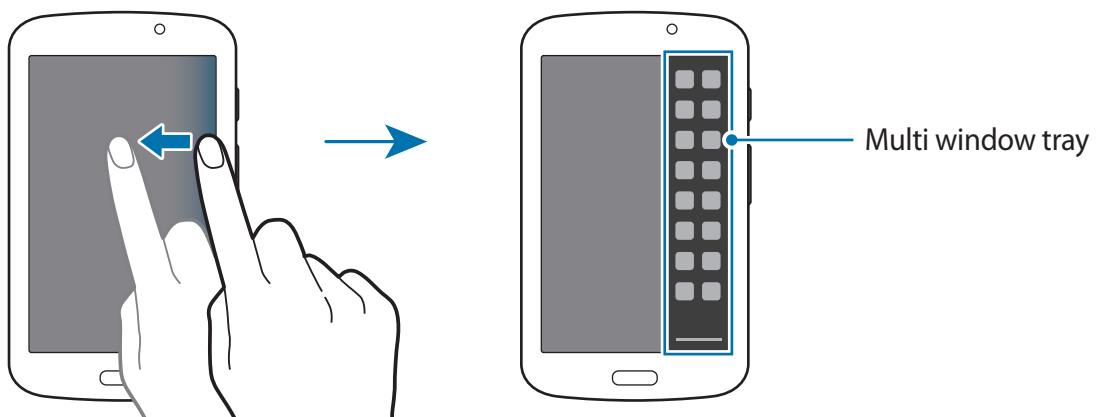
Using a split screen Multi window

Use this feature to run applications in a split screen.

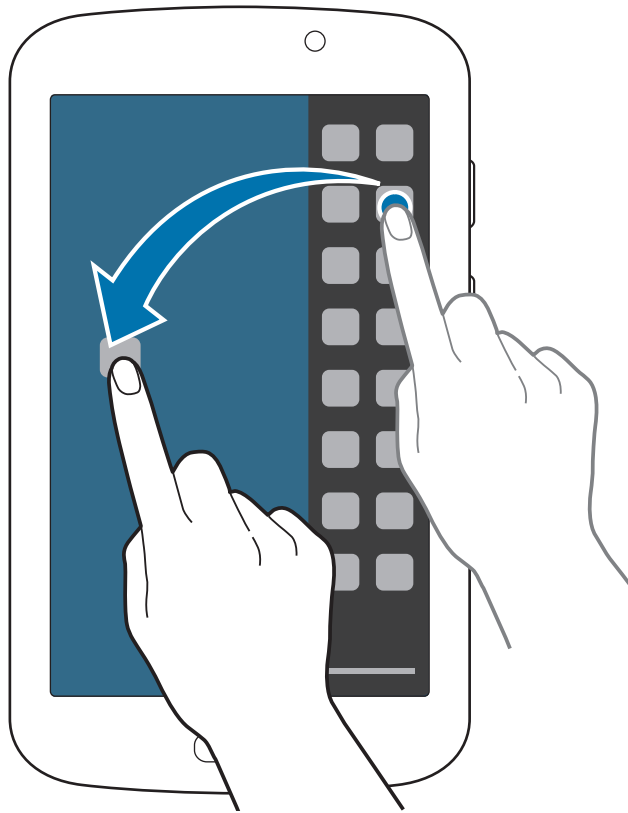
Launching applications in a split screen Multi window

- 1 Drag your finger from the right edge of the screen towards the middle of the screen. Alternatively, tap and hold ↻.

The Multi window tray appears at the right side of the screen.



- 2 Tap and hold an application icon on the Multi window tray, and then drag it to the screen. Release the application icon when the screen turns blue.



- 3 Tap and hold another application icon on the Multi window tray, and then drag it to a new location.

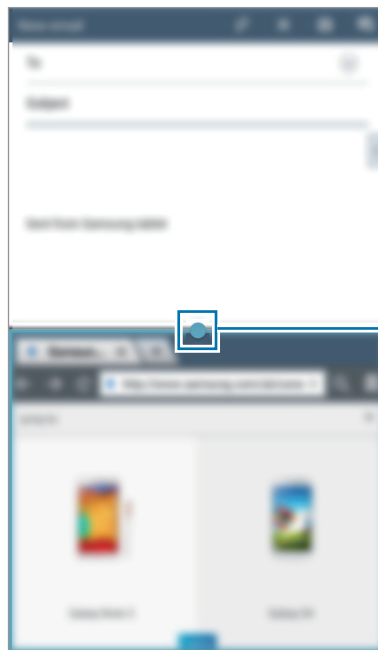
Sharing content between applications

You can easily share content between applications, such as **Email** and **Internet**, by dragging and dropping them.



Some applications may not support this feature.

1 Launch **Email** and **Internet** in a split screen Multi window.







Access the Multi window options.

2 Tap the circle between the application windows, and then tap .



Tap the circle between application windows to access the following options:

- : Switch locations between Multi window applications.
- : Share items, such as images, text, or links, between application windows by dragging and dropping them.
- : Maximise the window.
- : Close the application.


- 3 Tap and hold an item in the Internet window and drag it to a location in the Email window.



Creating a Multi window combination

Use this feature to save currently-running Multi window applications as a combination.

- 1 Launch multiple applications in a split screen Multi window.


- 2 Open the Multi window tray and tap  → **Create**.

The currently-running Multi window combination is added to the Multi window tray.

To launch applications using a saved combination, select the combination from the Multi window tray.

Notifications



Notification icons appear on the status bar at the top of the screen to report new messages, calendar events, device status, and more. Drag down from the status bar to open the notifications panel. Scroll the list to see additional alerts. To close the notifications panel, drag up the bar that is at the bottom of the screen.

From the notifications panel, you can view your device's current settings. Drag down from the status bar, and then tap  to use the following options:

- **Wi-Fi:** Activate or deactivate the Wi-Fi feature.
- **Location:** Activate or deactivate the GPS feature.
- **Sound:** Activate or deactivate silent mode.
- **Screen rotation:** Allow or prevent the interface from rotating when you rotate the device.
- **Bluetooth:** Activate or deactivate the Bluetooth feature.
- **Multi window:** Set the device to use Multi window.
- **Sync:** Activate or deactivate auto-syncing of applications.
- **Power saving:** Activate or deactivate power-saving mode.
- **Blocking mode:** Activate or deactivate blocking mode. In blocking mode, the device will block notifications. To select which notifications will be blocked, tap **Settings** → **Blocking mode**.
- **Flight mode:** Activate or deactivate flight mode.
- **Hands-free mode:** Activate or deactivate hands-free mode.



The available options may vary depending on the region or service provider.

To rearrange the options on the notifications panel, open the notifications panel, tap  → , and then tap and drag an item to another location.

Home screen

The Home screen is the starting point to access all of the device's features. It displays indicator icons, widgets, shortcuts to applications, and others.

The Home screen can have multiple panels. To view other panels, scroll left or right.

Rearranging items

Adding an application icon

On the Home screen, tap **Apps**, tap and hold an application icon, and then drag it into a panel preview.

Adding an item

Customise the Home screen by adding widgets, folders, or panels.

Tap and hold the empty area on the Home screen, and then select one of the following categories:

- **Apps and widgets:** Add widgets or applications to the Home screen.
- **Folder:** Create a new folder.
- **Page:** Add a new panel to the Home screen.

Moving an item

Tap and hold an item and drag it to a new location. To move it to another panel, drag it to the side of the screen.

Removing an item

Tap and hold an item, and drag it to the rubbish bin that appears at the top of the Home screen. When the rubbish bin turns red, release the item.

Rearranging panels


Adding a new panel

Tap  → **Edit page** → .

Moving a panel

Tap  → **Edit page**, tap and hold a panel preview, and then drag it to a new location.

Removing a panel

Tap  → **Edit page**, tap and hold a panel preview, and then drag it to the rubbish bin at the bottom of the screen.

Setting wallpaper

Set an image or photo stored in the device as wallpaper for the Home screen.

On the Home screen, tap  → **Set wallpaper** → **Home screen**, and then select one of the following:

- **Gallery:** See photos taken by the device's camera or images downloaded from the Internet.
- **Live wallpapers:** See animated images.
- **Photos:** See images in **Photos**.
- **Wallpapers:** See wallpaper images.

Select an image, resize the frame if necessary, and then set it as wallpaper.

Using widgets

Widgets are small applications that provide convenient functions and information on your Home screen. To use them, add widgets from the widgets panel to the Home screen.



- Some widgets connect to web services. Using a web-based widget may result in additional charges.
- The widgets available may vary depending on the region or service provider.

On the Home screen, tap **Apps** → **Widgets**. Scroll left or right on the widgets panel, and then tap and hold a widget to add it to the Home screen. Put it on a location you want, resize it by dragging the frame if necessary, and then tap anywhere on the screen to save the location of the widget.

Locked screen

The locked screen prevents the device from unwanted operation when not in use and also allows you to add convenient widgets.

Selecting a user profile

Before unlocking the device, select a user profile at the bottom of the screen to use the device with personalised settings. By setting up multiple user profiles, several users can share access to the device without affecting personal settings of others, such as email accounts and wallpaper. To manage or add other user profiles to the device, on the Home screen, tap **Apps** → **Settings** → **Users**.

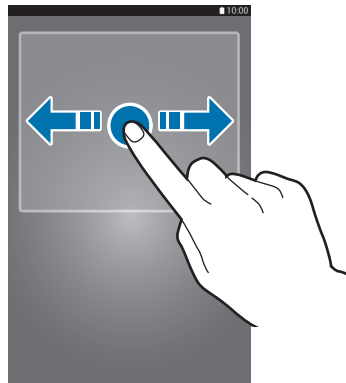
Adding widgets

To use widgets when the screen is locked, on the Home screen, tap **Apps** → **Settings** → **Lock screen**, and then tick **Multiple widgets**.



You cannot use widgets on the locked screen when the security features are activated.

Tap the widgets panel area at the upper part of the screen. Scroll right to the last page, tap **+**, and then select a widget to add to the locked screen.



Rearranging panels

Moving a panel

Scroll left or right on the widgets panel area, tap and hold a panel preview, and then drag it to a new location.

Removing a panel

Scroll left or right on the widgets panel area, tap and hold a panel preview, and then drag it to the rubbish bin at the top of the screen.


Applications screen

The Applications screen displays icons for all applications, including any new applications installed.

On the Home screen, tap **Apps** to open the Applications screen.


To view other panels, scroll left or right.

Rearranging applications

Tap  → **Edit**, tap and hold an application, and then drag it to a new location. To move it to another panel, drag it to the side of the screen.

Organising with folders

Put related applications together in a folder for convenience.

Tap  → **Edit**, tap and hold an application, and then drag it to **Create folder**. Enter a folder name and then tap **OK**. Put applications into the new folder by dragging, and then tap **Save** to save the arrangement.

Rearranging panels

Pinch on the screen, tap and hold a panel preview, and then drag it to a new location.

Installing applications

Use application stores, such as **Samsung Apps**, to download and install applications.

Uninstalling applications

Tap  → **Uninstall**, and then select an application to uninstall it.



Default applications that come with the device cannot be uninstalled.

Sharing applications

Share downloaded applications with other users via email, Bluetooth, or other methods.

Tap  → **Share apps**, select applications, tap **Done**, and then select a sharing method. The next steps vary depending on the method selected.

Using applications

This device can run many different types of applications, ranging from media to Internet applications.

Opening an application

On the Home screen or the Applications screen, select an application icon to open it.



Opening from recently-used applications

Press and hold the Home button to open the list of recently-used applications.

Select an application icon to open.

Closing an application

Close applications not in use to save battery power and maintain device performance.

Press and hold the Home button, tap , and then tap **End** next to an application to close it. To close all running applications, tap **End all**. Alternatively, press and hold the Home button, and then tap .

Help

Access help information to learn how to use the device and applications or configure important settings.

Tap **Help** on the Applications screen. Select an item to view tips.

Entering text

Use the Samsung keyboard or the voice input feature to enter text.

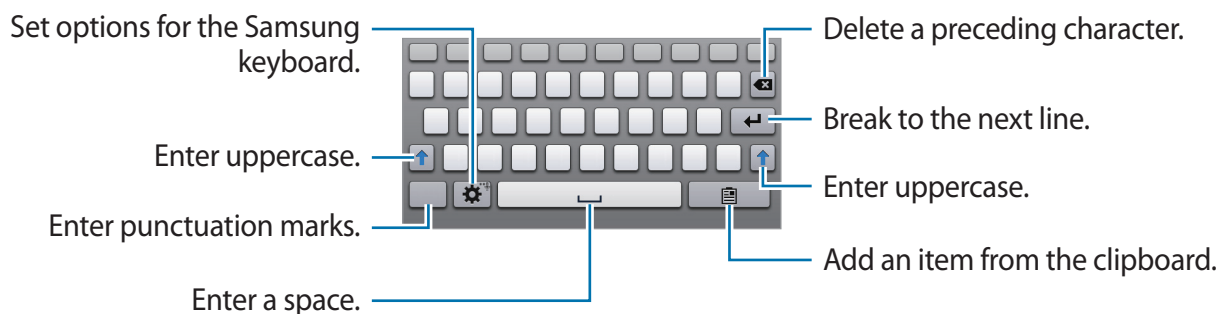


Text entry is not supported in some languages. To enter text, you must change the input language to one of the supported languages.


Changing the keyboard type

Tap any text field, open the notifications panel, tap **Choose input method**, and then select the type of keyboard to use.

Using the Samsung keyboard




Entering uppercase

Tap  before entering a character. For all caps, tap it twice.

Changing the keyboard type

Tap and hold , and then tap  to change the keyboard type.

On the floating keyboard, tap and hold  and move the floating keyboard to another location.

Changing language keyboards

Add languages to the keyboard, and then slide the space key left or right to change language keyboards.



Entering text by voice

Activate the voice input feature and then speak into the microphone. The device displays what you speak.

If the device does not recognise your words correctly, tap the underlined text and select an alternative word or phrase from the dropdown list.

To change the language or add languages for the voice recognition, tap the current language.

Copying and pasting

Tap and hold over text, drag  or  to select more or less text, and then tap **Copy** to copy or **Cut** to cut. The selected text is copied to the clipboard.

To paste it into a text entry field, tap and hold at the point where it should be inserted, and then tap **Paste**.

Connecting to a Wi-Fi network

Connect the device to a Wi-Fi network to use the Internet or share media files with other devices. (p. 84)



Ensure that the Wi-Fi connection is active before using Internet applications.

Turning Wi-Fi on and off

Open the notifications panel, and then tap **Wi-Fi** to turn it on or off.



- Your device uses a non-harmonised frequency and is intended for use in all European countries. The WLAN can be operated in the EU without restriction indoors, but cannot be operated outdoors.
- Turn off Wi-Fi to save the battery when not in use.

Joining Wi-Fi networks

On the Applications screen, tap **Settings** → **Wi-Fi**, and then drag the **Wi-Fi** switch to the right. Select a network from the list of detected Wi-Fi networks, enter a password if necessary, and then tap **Connect**. Networks that require a password appear with a lock icon. After the device connects to a Wi-Fi network, the device will automatically connect to it any time it is available.

Adding Wi-Fi networks

If the desired network does not appear in the networks list, tap **Add Wi-Fi network** at the bottom of the networks list. Enter the network name in **Network SSID**, select the security type and enter the password if it is not an open network, and then tap **Connect**.

Forgetting Wi-Fi networks

Any network that has ever been used, including the current network, can be forgotten so the device will not automatically connect to it. Select the network in the networks list, and then tap **Forget**.

Setting up accounts

Google applications, such as **Play Store**, require a Google account, and **Samsung Apps** requires a Samsung account. Create Google and Samsung accounts to have the best experience with the device.

Adding accounts

Follow the instructions that appear when opening a Google application without signing in to set up a Google account.

To sign in with or sign up for a Google account, on the Applications screen, tap **Settings** → **Add account** → **Google**. After that, tap **New** to sign up, or tap **Existing**, and then follow the on-screen instructions to complete the account setup. More than one Google account can be used on the device.


Set up a Samsung account as well.

Removing accounts

On the Applications screen, tap **Settings**, select an account name under **Accounts**, select the account to remove, and then tap **Remove account**.

Setting up user profiles

Set up user profiles and then select one when unlocking the device to use personalised settings. By setting up multiple user profiles, several users can share the device without affecting others' personal settings, such as email accounts, wallpaper preferences, and more.

On the Applications screen, tap **Settings** → **Users** → , and then follow the on-screen instructions to set up a new user profile. To access the device with a user profile, select a profile at the bottom of the locked screen.

Transferring files

Move audio, video, image, or other types of files from the device to the computer, or vice versa.

Connecting with Samsung Kies

Samsung Kies is a computer application that manages media contents and personal information with Samsung devices. Download the latest Samsung Kies from the Samsung website.

- 1 Connect the device to the computer using the USB cable.
Samsung Kies launches on the computer automatically. If Samsung Kies does not launch, double-click the Samsung Kies icon on the computer.
- 2 Transfer files between your device and the computer.
Refer to the Samsung Kies help for more information.

Connecting with Windows Media Player

Ensure that Windows Media Player is installed on the computer.

- 1 Connect the device to the computer using the USB cable.
- 2 Open Windows Media Player and sync music files.

Connecting as a media device

- 1 Connect the device to the computer using the USB cable.
- 2 Open the notifications panel, and then tap **Connected as a media device** → **Media device (MTP)**.
Tap **Camera (PTP)** if your computer does not support Media Transfer Protocol (MTP) or not have any appropriate driver installed.
- 3 Transfer files between your device and the computer.

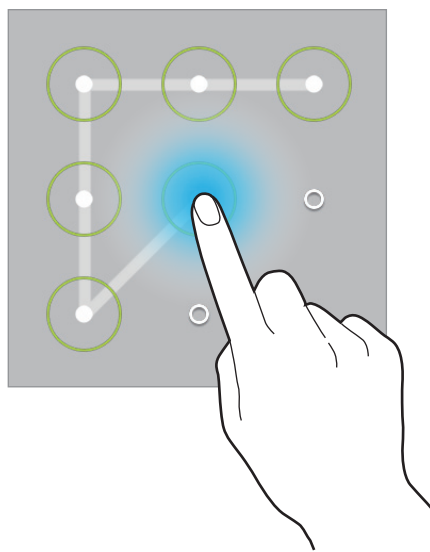
Securing the device

Prevent others from using or accessing personal data and information stored in the device by using the security features. The device requires an unlock code whenever unlocking it.

Setting a pattern

On the Applications screen, tap **Settings** → **Lock screen** → **Screen lock** → **Pattern**.

Draw a pattern by connecting four dots or more, and then draw the pattern again to verify it. Set a backup unlock PIN to unlock the screen when you forget the pattern.



Setting a PIN

On the Applications screen, tap **Settings** → **Lock screen** → **Screen lock** → **PIN**.

Enter at least four numbers, and then enter the password again to verify it.

Setting a password

On the Applications screen, tap **Settings** → **Lock screen** → **Screen lock** → **Password**.

Enter at least four characters including numbers and symbols, and then enter the password again to verify it.

Unlocking the device

Turn on the screen by pressing the Power button or the Home button, and enter the unlock code.



If the unlock code is forgotten, take the device to a Samsung Service Centre to reset it.

Upgrading the device

The device can be upgraded to the latest software.



This feature may not be available depending on the region or service provider.

Upgrading with Samsung Kies

Launch Samsung Kies and connect the device to the computer. Samsung Kies automatically recognises the device and shows available updates in a dialogue box, if any. Click the Update button in the dialogue box to start upgrading. Refer to the Samsung Kies help for details on how to upgrade.



- Do not turn off the computer or disconnect the USB cable while the device is upgrading.
- While upgrading the device, do not connect other media devices to the computer. Doing so may interfere with the update process.

Upgrading over the air

The device can be directly upgraded to the latest software by the firmware over-the-air (FOTA) service.

On the Applications screen, tap **Settings** → **About device** → **Software update** → **Update now**.

Communication

Contacts

Use this application to manage contacts, including phone numbers, email addresses, and others.




Tap **Contacts** on the Applications screen.

Managing contacts

Tap **Contacts**.

Creating a contact

Tap  and enter contact information.

-  : Add an image.
-  /  : Add or delete a contact field.

Editing a contact

Select a contact to edit, and then tap .

Deleting a contact

Tap .



Searching for contacts

Tap **Contacts**.

Use one of the following search methods:

- Scroll up or down the contacts list.
- Use the index at the left side of the contacts list for quick scrolling, by dragging a finger along it.
- Tap the search field at the top of the contacts list and enter search criteria.

Once a contact is selected, take one of the following actions:

-  : Add to favourite contacts.
-  : Compose an email.

Displaying contacts

Tap **Contacts**.

By default, the device shows all saved contacts.

Tap  → **Contacts to display**, and then select a location where contacts are saved.

Moving contacts

Tap **Contacts**.

Moving contacts to Google

Tap  → **Merge accounts** → **Merge with Google**.

Contacts moved to Google Contacts appear with  in the contacts list.

Moving contacts to Samsung

Tap  → **Merge accounts** → **Merge with Samsung**.

Contacts moved to Samsung Contacts appear with  in the contacts list.

Importing and exporting contacts

Tap **Contacts**.

Importing contacts

Tap  → **Import/Export**, and then select an import option.

Exporting contacts


Tap  → **Import/Export**, and then select an export option.

Sharing contacts

Tap  → **Share namecard via** → **Multiple contacts**, select contacts, tap **Done**, and then select a sharing method.

Favourite contacts

Tap **Favourites**.

Tap , and then take one of the following actions:

- **Search:** Search for contacts.
- **Add to Favourites:** Add contacts to favourites.
- **Remove from Favourites:** Remove contacts from favourites.
- **Grid view / List view:** View contacts in grid or list form.

Contact groups

Tap **Groups**.

Creating a group


Tap  → **Create**, set details for the group, add contacts, and then tap **Save**.

Adding contacts to a group

Select a group, and then tap . Select contacts to add, and then tap **Done**.

Managing groups

Select a group, tap , and then take one of the following actions:

- **Search:** Search for contacts.
- **Edit group:** Change the group settings.
- **Create:** Make a new group.
- **Remove from group:** Remove members from the group.
- **Send email:** Send an email to a group's members.
- **Change order:** Tap and hold  next to the group name, drag it up or down to another position, and then tap **Done**.

Deleting groups

Tap , select user-added groups, and then tap **Delete**. Default groups cannot be deleted.


Sending an email to a group's members

Select a group, tap  → **Send email**, select members, and then tap **Done**.

Business card

Tap **Contacts**.

Create a business card and send it to others.

Tap **Set up my profile**, enter details, such as phone number, email address, and postal address, and then tap **Save**. If user information has been saved when you set up the device, select the business card, and then tap  to edit.

Tap  → **Share namecard via** → **Selected contact**, and then select a sharing method.


Email

Use this application to send or view email messages.

Tap **Email** on the Applications screen.



Setting up email accounts

Set up an email account when opening **Email** for the first time.

Enter the email address and password. Tap  for a private email account, such as Google Mail, or tap **Manual setup** for a company email account. After that, follow the on-screen instructions to complete the setup.

To set up another email account, tap  → **Settings** → **Add account**.

Sending messages



Tap the email account to use, and then tap  at the top of the screen. Enter recipients, subject, and message, and then tap .

Tap  to add a recipient from the contacts list.


Tap  → **Cc** or **Bcc** to add more recipients.

Tap **+Me** to add yourself as a recipient.

Tap  to attach images, videos, contacts, memos, events, and others.

Tap  →  to insert images, events, contacts, location information, and others into the message.

Sending scheduled messages

While composing a message, tap  → **Schedule sending**. Tick **Schedule sending**, set a time and date, and then tap **Done**. The device will send the message at the specified time and date.

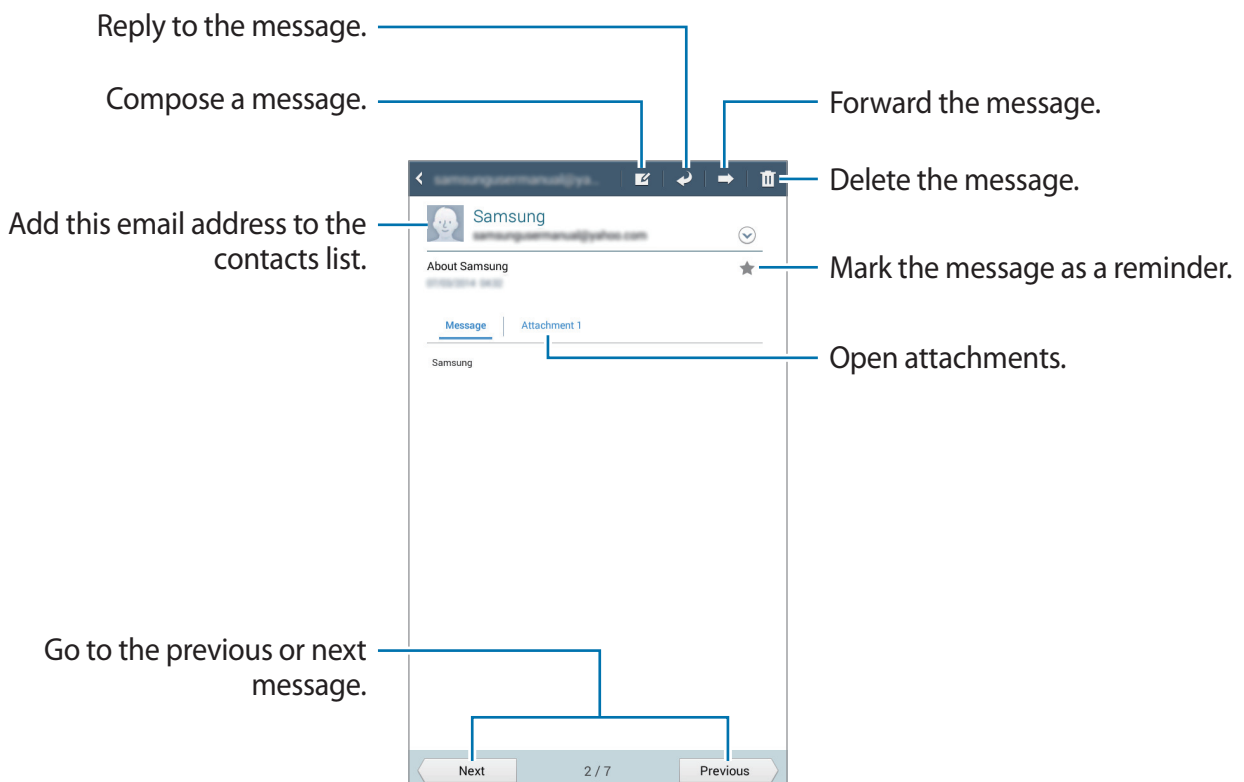


- If the device is turned off at the scheduled time, is not connected to the network, or the network is unstable, the message will not be sent.
- This feature is based on the time and date set on the device. The time and date may be incorrect if you move across time zones and the network does not update the information.

Reading messages

Select an email account to use, and new messages are retrieved. To manually retrieve new messages, tap .

Tap a message to read.



Tap the attachment tab to open attachments, and then tap **Save** to save it.

Google Mail

Use this application to quickly and directly access the Google Mail service.

Tap **Google Mail** on the Applications screen.




- This application may not be available depending on the region or service provider.
- This application may be labelled differently depending on the region or service provider.

Sending messages

In any mailbox, tap , enter recipients, a subject, and a message, and then tap **SEND**.


Tap + **CC/BCC** to add more recipients.

Tap  → **Save draft** to save the message for later delivery.

Tap  → **Attach file** to attach images, videos, music, and others.

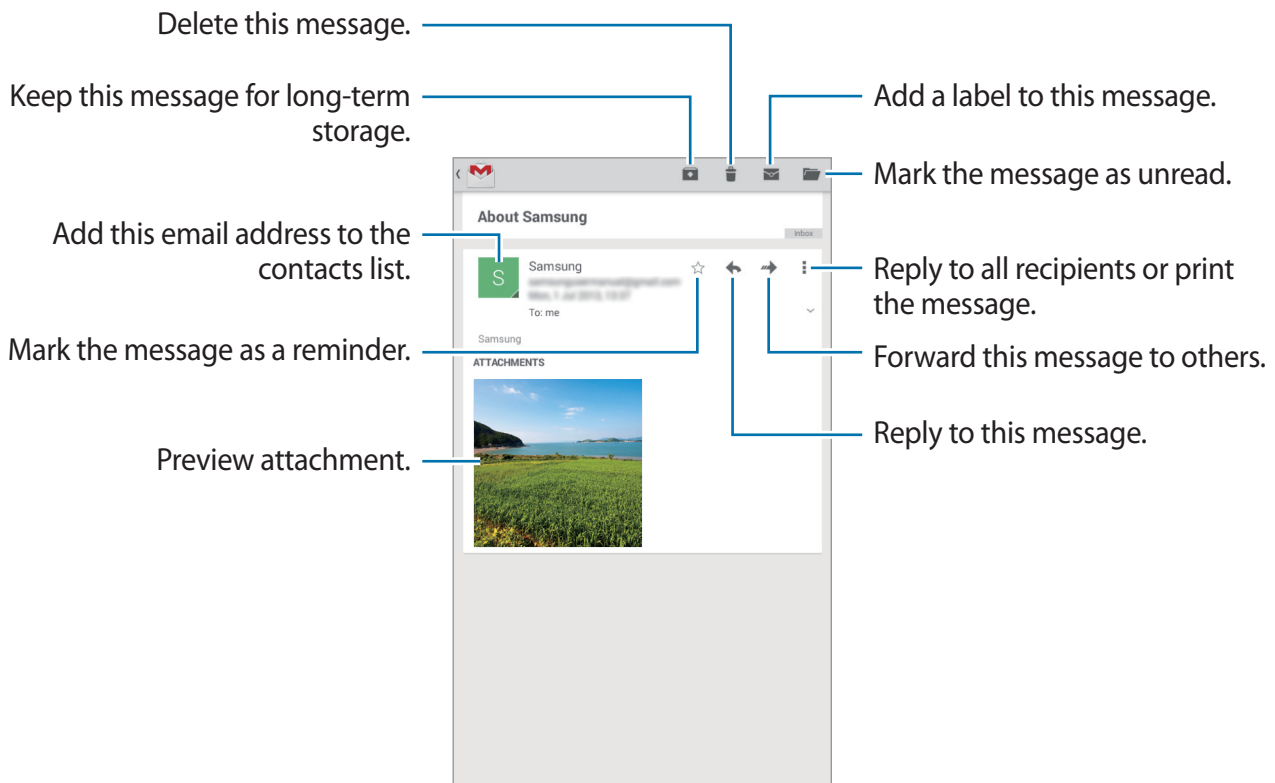
Tap  → **Discard** to start over.

Tap  → **Settings** to change the Google Mail settings.

Tap  → **Send feedback** to report your opinions for application development.

Tap  → **Help** to access help information for the Google Mail.


Reading messages



Labels

Google Mail does not use actual folders, but uses labels instead. When Google Mail is launched, it displays messages labelled Inbox.

Tap  to view messages in other labels.

To add a label to a message, select the message, tap  → **Change labels**, and then select the label to assign.

Hangouts

Use this application to chat with others.

Tap **Hangouts** on the Applications screen.



This application may not be available depending on the region or service provider.

Select a friend from the friends list or enter data to search and select a friend from the results to start chatting.

Google+

Use this application to stay connected with people via Google's social network service.

Tap **Google+** on the Applications screen.



This application may not be available depending on the region or service provider.

Tap **All** to change the category, and then scroll up or down to view posts from your circles.

Photos


Use this application to view and share images or videos via Google's social network services.

Tap **Photos** on the Applications screen.






This application may not be available depending on the region or service provider.

Select one of the following categories:

- **ALL:** View all the images or videos that are taken or downloaded to the device.
- **HIGHLIGHTS:** View images or videos grouped by date or album. Tap  to view all of the images or videos in the group.

Then, select an image or video.

While viewing it, use one of the following icons:

- : Modify the image.
- : Share the image or video with others.
- : Delete the image or video.

ChatON

Use this application to chat with any device. To use this application, you must sign in to your Samsung account.

Tap **ChatON** on the Applications screen.



This application may not be available depending on the region or service provider.

Create the buddies list by entering phone numbers or email addresses of Samsung accounts, or selecting buddies from the list of suggestions.

Select a buddy from the list, and then tap  to start chatting.

Web & network

Internet

Use this application to browse the Internet.

Tap **Internet** on the Applications screen.

Viewing webpages

Tap the address field, enter the web address, and then tap **Go**.


Tap  to access additional options while viewing a webpage.

Opening a new page

Tap .

To go to another webpage, scroll left or right on the title field, and tap the title to select it.

Searching the web by voice

Tap the address field, tap , speak a keyword, and then select one of the suggested keywords that appear.





This feature may not be available depending on the region or service provider.

Bookmarks

To bookmark the current webpage, tap .


To open a bookmarked webpage, tap , and then select one.

History

Tap  → **History** to open a webpage from the list of recently-visited webpages. To clear the history, tap  → **Clear history**.

Tap  → **History** → **Most visited** to open a webpage from the list of most visited webpages.

Saved pages

To view saved webpages, tap  → **Saved pages**.

Links

Tap and hold a link on the webpage to open it in a new page, save, or copy.

To view saved links, tap  → **Downloads**.

Sharing webpages

To share a webpage address with others, tap  → **Share via**.

To share a part of a webpage, tap and hold the desired text, and then tap **Share via**.

Chrome

Use this application to search for information and browse webpages.

Tap **Chrome** on the Applications screen.




This application may not be available depending on the region or service provider.

Viewing webpages

Tap the address field, and then enter a web address or search criteria.

Opening a new page

Tap  → **New tab**.

To go to another webpage, scroll left or right on the title field, and tap the title to select it.

Bookmarks

To bookmark the current webpage, tap ☆, enter details, such as name and web address, and then tap **Save**.

To open a bookmarked webpage, tap ☰ → **Bookmarks**, and then select one.

Searching the web by voice

Tap 🗣️, speak a keyword, and then select one of the suggested keywords that appear.

Syncing with other devices

Sync open tabs and bookmarks to use with Chrome on another device, when you are logged in with the same Google account.

To view open tabs on other devices, tap ☰ → **Other devices**. Select a webpage to open.

Bluetooth

Bluetooth creates a direct wireless connection between two devices over short distances. Use Bluetooth to exchange data or media files with other devices.




- Samsung is not responsible for the loss, interception, or misuse of data sent or received via the Bluetooth feature.
- Always ensure that you share and receive data with devices that are trusted and properly secured. If there are obstacles between the devices, the operating distance may be reduced.
- Some devices, especially those that are not tested or approved by the Bluetooth SIG, may be incompatible with your device.
- Do not use the Bluetooth feature for illegal purposes (for example, pirating copies of files or illegally tapping communications for commercial purposes).
Samsung is not responsible for the repercussion of illegal use of the Bluetooth feature.

To activate Bluetooth, on the Applications screen, tap **Settings** → **Bluetooth**, and then drag the **Bluetooth** switch to the right.

Pairing with other Bluetooth devices

On the Applications screen, tap **Settings** → **Bluetooth** → **Scan**, and detected devices are listed. Select the device you want to pair with, and then accept the auto-generated passkey on both devices to confirm.


Sending and receiving data

Many applications support data transfer via Bluetooth. An example is **Gallery**. Open **Gallery**, select an image, tap  → **Bluetooth**, and then select one of the Bluetooth devices. After that, accept the Bluetooth authorisation request on the other device to receive the image.

When another device sends you data, accept the Bluetooth authorisation request made by another device. Received files are saved in the **Download** folder. If a contact is received, it is added to the contacts list automatically.

Samsung Link

Use this application to play content saved on remotely-located devices or web storage services over the Internet. You can play and send multimedia files on your device to another device or web storage service.

To use this application, you must sign in to your Samsung account and register two or more devices. The registration methods may vary depending on the device type. To get more details, tap  → **Help**.




Tap **Samsung Link** on the Applications screen.






This application may not be available depending on the region or service provider.

When opening this application, all the content from your registered devices and storage services will appear. You can browse and play them.

Sending files

Send files to other devices or upload them to web storage services. Tap  to select a device or web storage and scroll left or right to select a media category. Then, tap , select files, and then tap .

Sharing files

Tap  to select a device or web storage and scroll left or right to select a media category. Then, tap , select files, tap , and then select a sharing method.

Playing files on a remote device


Tap  to select a device or web storage and scroll left or right to select a media category. Then, tap , select files, tap , and then select a device.




- Supported file formats may differ depending on connected devices as a media player.
- Some files may be buffered while playing depending on the network connection.

Managing contents on a web storage service

Select a web storage service, and then view and manage your files.

To transfer files between your device and a web storage service, tap , select files, and then tap .

To register web storage services to the device, tap  → **Add storage**, and then select a web storage service.

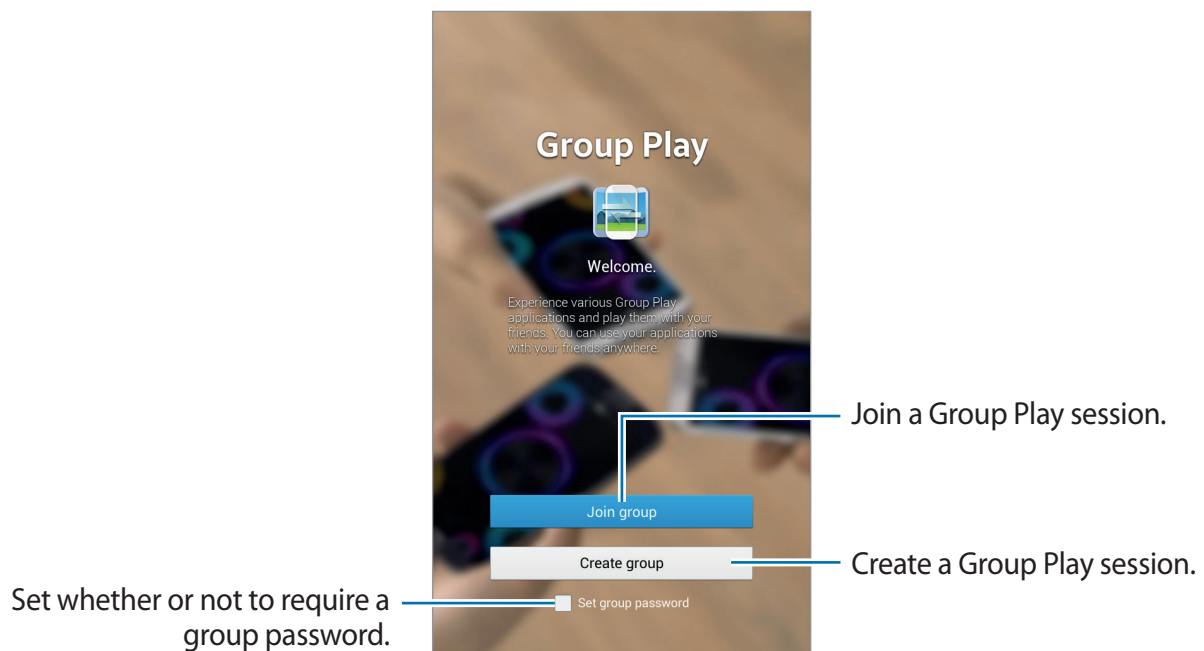
Group Play

Use this application to enjoy moments with your friends by sharing and playing content. Create or join a Group Play session, and then share content, such as images or music.

Tap **Group Play** on the Applications screen.



- This application may not be available depending on the region or service provider.
- While using this application, you cannot access the Internet through the Wi-Fi network.



Creating a group for Group Play

When you create a Group Play session, other devices can join the session and share the content.

When you use a password for a Group Play session, other devices must enter the password to join the session. To use a password, tick **Set group password**.

Tap **Create group**, set a password, and then use the following features:

- **Share music:** Connect two or more devices and use them to achieve a surround sound effect when sharing music.
- **Share images:** Select images to share.
- **Share documents:** Select documents to share.
- **Play games and more:** Play online games with friends.








Joining Group Play

Join a Group Play session created by another device.

Tap **Join group**, select a Group Play session to join, and then enter the password for the group if necessary. Select a media category and the content that is currently being shared will appear on the device.




Using additional features in a Group Play session

While sharing content with other devices, use the following features:

- : Change the speaker settings for each connected device.
-  → : Adjust the volume.
-  → : Set the device to use all connected devices as stereo speakers.
- : Write a note or draw on the screen. All participants can see what you create.
- : View all shared images in mosaic layout.



This feature is available when you selected more than two images.

-  / : Select more images or documents.
- : View the group participants.

Media

Music

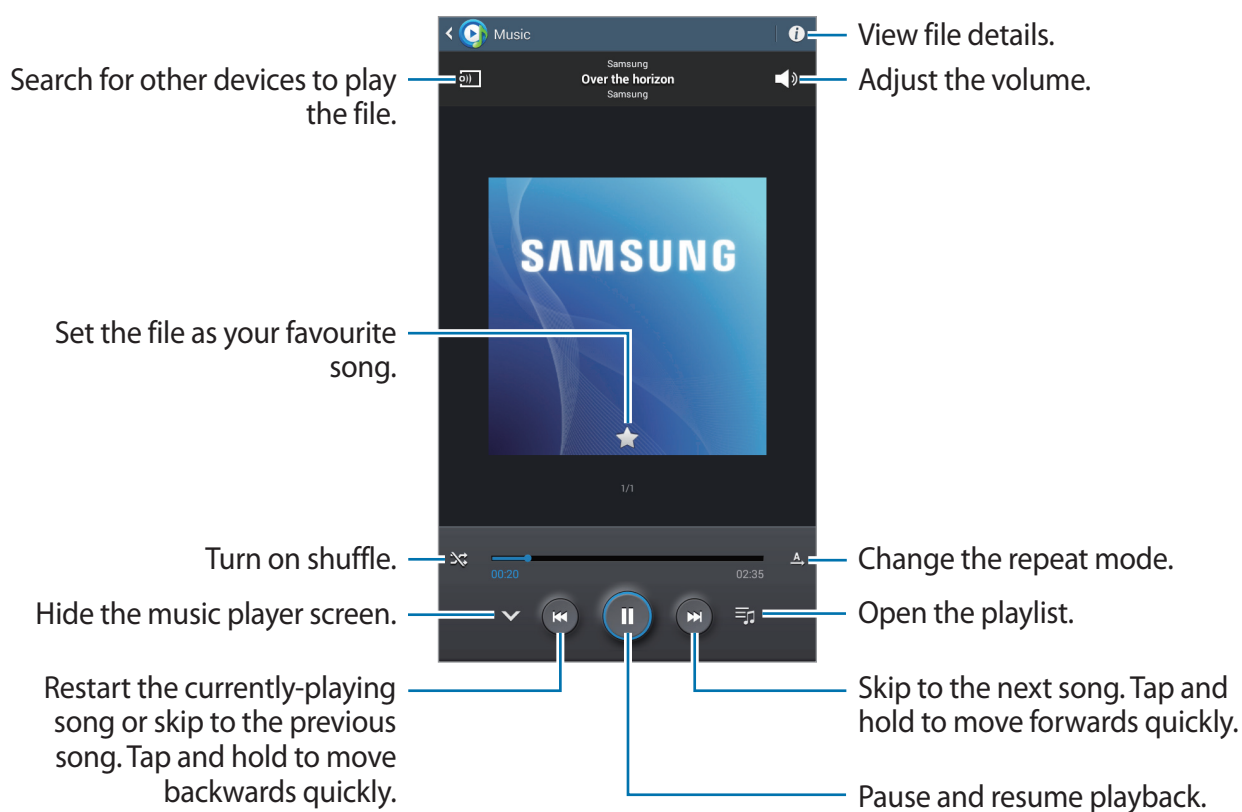
Use this application to listen to music.

Tap **Music** on the Applications screen.

Playing music

Select a music category, and then select a song to play.

Tap the album image at the bottom of the screen to open the music player screen.



To listen to songs at equal volume levels, tap  → **Settings** → **Smart volume**.



When **Smart volume** is activated, the volume may end up louder than the device volume level. Use caution to avoid long-term exposure to loud sounds to prevent damage to your hearing.




Smart volume may not be activated for some files.

Setting a song as alarm ringtone

To use the currently-playing song as alarm ringtone, tap  → **Set as alarm tone**.

Listening to a song with others

To share the currently-playing song with others, tap  → **Play via group play**.


Creating playlists

Make an own selection of songs.

Tap , enter a title, and then tap **OK**. Select songs to include, and then tap **Done**.

To add the currently-playing song to a playlist, tap  → **Add to playlist**.

Playing music by mood

Play music grouped by mood. The playlist is automatically created by the device. When a new song is added, tap **Music square** → .

Tap **Music square** and select a cell of mood. Or select multiple cells by dragging your finger.

Camera

Use this application to take photos or videos.

Use **Gallery** to view photos and videos taken with the device's camera. (p. 62)

Tap **Camera** on the Applications screen.



- The camera automatically shuts off when unused.
- Make sure that the lens is clean. Otherwise, the device may not work properly in some modes that require high resolutions.

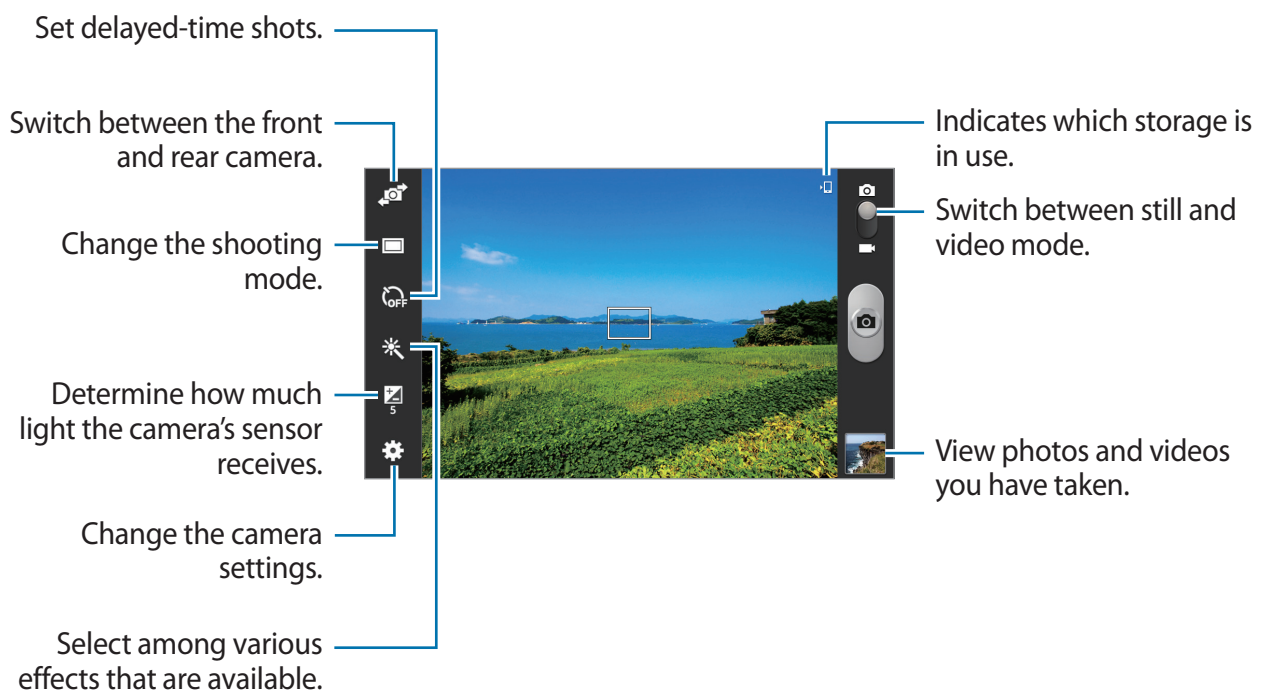
Camera etiquette

- Do not take photos or videos of other people without their permission.
- Do not take photos or videos where legally prohibited.
- Do not take photos or videos in places where you may violate other people's privacy.

Taking photos

Taking a photo

Tap  to take a photo.



Scene mode

Predefined settings make point-and-shoot photos easier to take.

Tap  → **Scene mode**.

- **Landscape:** Use this setting to take photos of blue skies and landscapes with richer colours.
- **Sports:** Use this setting for fast-moving subjects.
- **Party/Indoor:** Use this setting for well-lit indoor scenes.
- **Beach/Snow:** Use this setting for well-lit or sunny outdoor scenes.

- **Sunset:** Use this setting for richer colours and sharper contrasts.
- **Dawn:** Use this setting for very subtle colours.
- **Autumn colour:** Use this setting for red-shifted background scenery.
- **Candlelight:** Use this setting for images of bright light against a dark background.
- **Firework:** Use this setting for high-contrast scenes.
- **Backlight:** Use this setting for subjects with bright lights behind them.
- **Night:** Use this setting for images taken in darker conditions.

Shooting mode

Several photo effects are available.

Tap  → **Shooting mode**.

- **Single shot:** Take a single photo.
- **Panorama:** Take a photo composed of many photos strung together.



To get the best shot, follow these tips.

- Move the camera slowly in one direction.
- Keep the camera's viewfinder within the guide frame.
- Avoid taking photos of a subject in front of unrecognisable backgrounds, such as empty skies or plain walls.
- **Share shot:** Send a photo directly to another device via Wi-Fi Direct.
- **Buddy photo share:** Set the device to recognise a person's face that you have tagged in a photo and send it to that person. Face recognition may fail depending on the face angle, face size, skin colour, facial expression, light conditions, or accessories the subject is wearing.
- **Smile shot:** Take a photo when a subject smiles.

Panoramic photos



A panoramic photo is a wide landscape image consisting of multiple shots.

Tap  → **Shooting mode** → **Panorama**.

Tap  and move the camera in one direction. When the blue frame aligns with the viewfinder, the camera automatically takes another shot in a panoramic sequence. To stop shooting, tap .

Taking videos

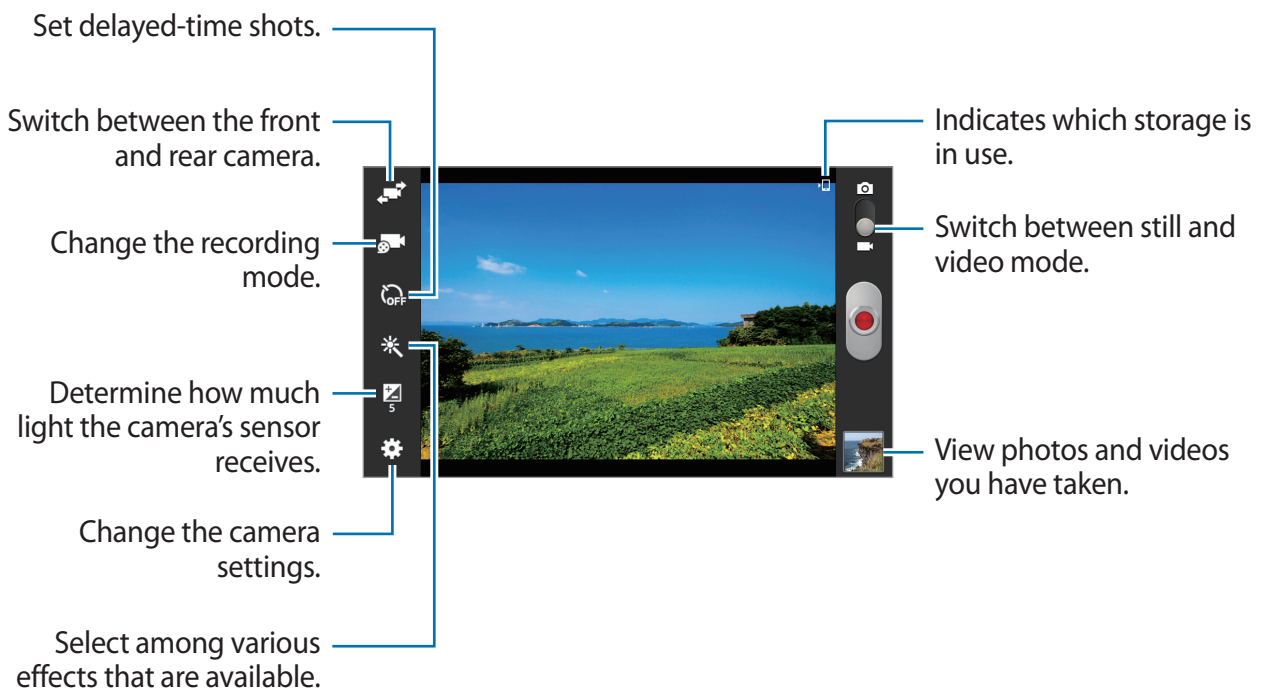
Taking a video


Slide the still-video switch to the video icon, and then tap  to take a video. To stop recording, tap .



The zoom function may not be available when recording at the highest resolution.

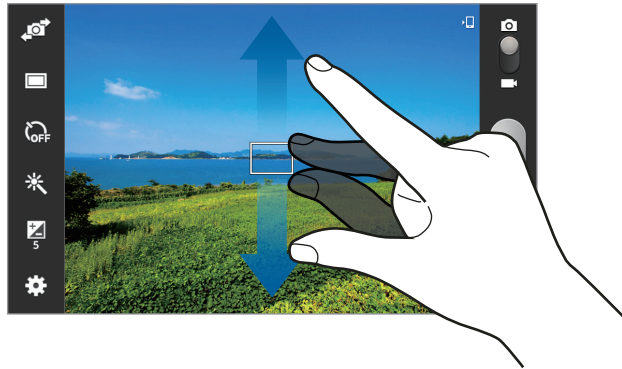
Recording mode



Tap  to change the recording mode.

- **Normal:** Use this mode for normal quality.
- **Limit for Email:** Use this mode to lower the recording quality for sending via email.

Zooming in and out




Use one of the following methods:

- Use the Volume button to zoom in or out.
- Spread two fingers apart on the screen to zoom in, and pinch to zoom out.



- The zoom function may not be available when shooting at the highest resolution.
- The zoom in/out effect is available when using the zoom feature while shooting video.

Configuring settings for Camera

Tap  to configure settings for Camera. Not all of the following options are available in both still camera and video camera modes. The available options vary depending on the mode used.

- **Edit shortcuts:** Reorganise shortcuts to frequently-used options.
- **Location tag:** Attach a GPS location tag to the photo.



- To improve GPS signals, avoid shooting in locations where the signal may be obstructed, such as between buildings or in low-lying areas, or in poor weather conditions.
- Your location may appear on your photos when you upload them to the Internet. To avoid this, deactivate the GPS tag setting.

- **Self-portrait:** Take a photo of yourself.
- **Self recording:** Take a video of yourself.
- **Shooting mode:** Change the shooting mode.
- **Recording mode:** Change the recording mode.
- **Effects:** Select among various effects that are available.
- **Scene mode:** Change the scene mode.
- **Brightness:** Change the brightness.
- **Timer:** Use this for delayed-time shots.
- **Resolution:** Select a resolution. Use higher resolution for higher quality. But it takes up more memory.
- **White balance:** Select an appropriate white balance, so images have a true-to-life colour range. The settings are designed for specific lighting situations. These settings are similar to the heat range for white-balance exposure in professional cameras.
- **Metering:** Select a metering method. This determines how light values are calculated. **Centre-weighted** measures background light in the centre of the scene. **Spot** measures the light value at a specific location. **Matrix** averages the entire scene.
- **Guidelines:** Display viewfinder guides to help composition when selecting subjects.
- **Contextual filename:** Set the camera to display contextual tags.
- **Image quality:** Set the quality level for photos. Higher quality images require more storage space.
- **Video quality:** Set the quality level for videos.
- **Storage:** Select the memory location for storage.
- **Reset:** Reset the camera settings.

Shortcuts

Reorganise shortcuts for easy access to the camera's various options.

Tap  → **Edit shortcuts.**

Tap and hold an option and drag it to a slot at the left of the screen. The other icons can be moved within the list by tapping and dragging them.

Gallery

Use this application to view images and videos.

Tap **Gallery** on the Applications screen.

Viewing images

Launching **Gallery** displays available folders. When another application, such as **Email**, saves an image, the **Download** folder is automatically created to contain the image. Likewise, capturing a screenshot automatically creates the **Screenshots** folder. Select a folder to open it.

In a folder, images are displayed by creation date. Select an image to view it in full screen.

Scroll left or right to view the next or previous image.

Zooming in and out


Use one of the following methods to zoom in an image:

- Double-tap anywhere to zoom in.
- Spread two fingers apart on any place to zoom in. Pinch to zoom out, or double-tap to return.

Playing videos


Video files show the  icon on the preview. Select a video to watch it and tap .

Trimming segments of a video


Select a video and tap . Move the start bracket to the desired starting point, move the end bracket to the desired ending point, and then save the video.

Editing images

When viewing an image, tap  and use the following functions:

- **Favourite:** Add to the favourites list.
- **Slideshow:** Start a slideshow with the images in the current folder.
- **Photo frame:** Use this to add a frame and a note to an image. The edited image is saved in the **Photo frame** folder.
- **Photo note:** Use this to write a note on the back of the image. Tap  to edit the note.
- **Copy to clipboard:** Copy to clipboard.
- **Print:** Print the image by connecting the device to a printer. Some printers may not be compatible with the device.
- **Rename:** Rename the file.
- **Buddy photo share:** Send the image to a person whose face is tagged in the image.
- **Rotate left:** Rotate anticlockwise.
- **Rotate right:** Rotate clockwise.
- **Crop:** Resize the blue frame to crop and save the image in it.
- **Set as:** Set the image as wallpaper or a contact image.
- **Details:** View image details.
- **Settings:** Change the Gallery settings.

Modifying images




When viewing an image, tap .

Favourite images

When viewing an image, tap  → **Favourite** to add the image to the favourites list.




Deleting images

Use one of the following methods:


- In a folder, tap  → **Select item**, select images by ticking, and then tap .
- When viewing an image, tap .

Sharing images


Use one of the following methods:

- In a folder, tap  → **Select item**, select images, and then tap  to send them to others or share them via social network services.
- When viewing an image, tap  to send it to others or share it via social network services.

Setting as wallpaper

When viewing an image, tap  → **Set as** to set the image as wallpaper or to assign it to a contact.

Tagging faces


Tap  → **Settings** → **Tags**, and then tick **Face tag**. A yellow frame appears around the recognised face when opening an image. Tap the face, tap **Add name**, and then select or add a contact.

When the face tag appears on an image, tap the face tag and use available options, such as sending messages.




Face recognition may fail depending on the face angle, face size, skin colour, facial expression, light conditions, or accessories the subject is wearing.

Using Tag Buddy

Tap  → **Settings** → **Tags** → **Tag buddy**, and then drag the **Tag buddy** switch to the right to display a contextual tag (weather, location, date, and person's name) when opening an image.

Organising with folders

Create a folder to organise images or videos stored in the device. You can copy or move files from one folder to another.

To create a new folder, tap . Enter a name for the folder, tap **OK**, and then tick images or videos. Tap and hold any selected image or video, drag it to the new folder, and then tap **Done**. Tap **Copy** to copy or **Move** to move.

Video

Use this application to play video files.

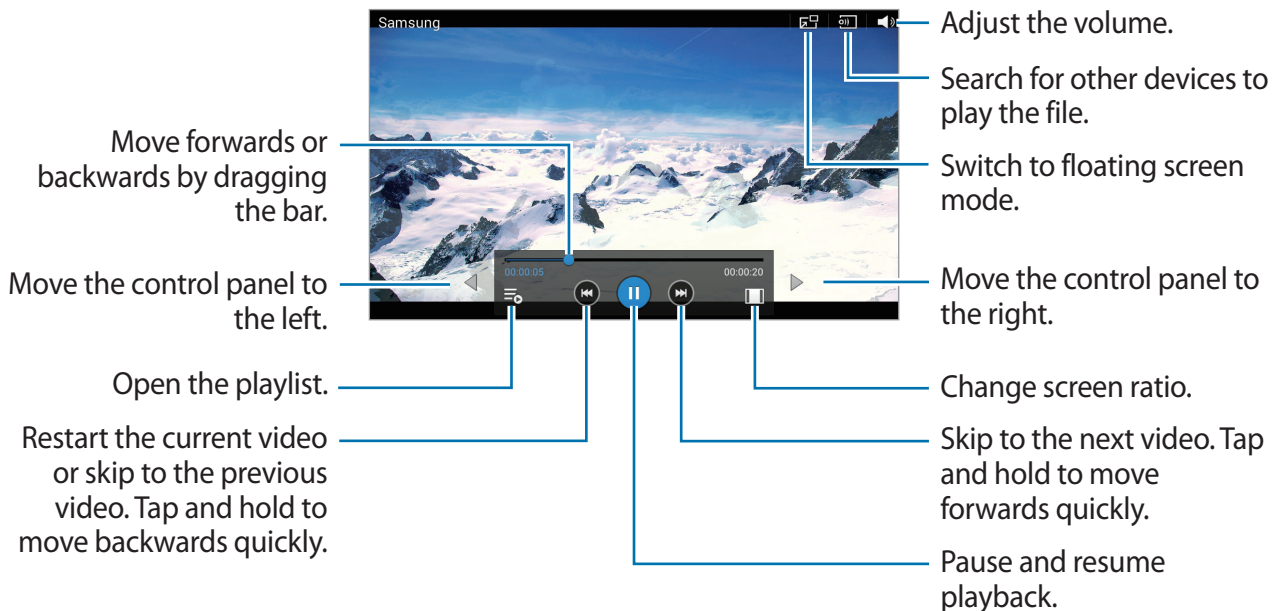
Tap **Video** on the Applications screen.




Avoid locking the device's screen while playing a DivX Video-On-Demand. Each time you lock the screen while playing a DivX Video-On-Demand, one of your available rental counts is lost.

Playing videos

Select a video to play.




Deleting videos

Tap  → **Delete**, select videos by ticking, and then tap **Delete**.

Sharing videos

Tap  → **Share via**, select videos, tap **Done**, and then select a sharing method.

Using Popup Video player

Use this feature to use other applications without closing the video player. While watching videos, tap  to use the pop-up player.

Spread two fingers apart on the screen to enlarge the player or pinch to reduce it. To move the player, drag the player to another location.

YouTube

Use this application to watch videos from the YouTube website.


Tap **YouTube** on the Applications screen.




This application may not be available depending on the region or service provider.

Watching videos



Tap , and then enter a keyword. Select one of the returned search results to watch a video.

Tap the screen, tap , and then rotate the device to landscape orientation to display full screen.

Sharing videos

Select the video to view, tap , and then select a sharing method.

Uploading videos

Tap  → **Uploads** → , select a video, enter information for the video, and then tap **UPLOAD**.

Flipboard

Use this application to access your personalised magazines.

Tap **Flipboard** on the Applications screen.



This application may not be available depending on the region or service provider.

To start your Flipboard, flick left on the greeting page, select news topics, and then tap **Build Your Flipboard**.

Select a cover story or a topic, flick through the Flipboard pages, and then select an article to read.

Application & media stores

Play Store


Use this application to purchase and download applications and games that are able to run on the device.

Tap **Play Store** on the Applications screen.



This application may not be available depending on the region or service provider.

Installing applications

Browse applications by category, or tap  to search with a keyword.


Select an application to view information. To download it, tap **INSTALL**. If there is a charge for the application, tap the price, and follow the on-screen instructions to complete the purchase process.



When a new version is available for any installed application, an update icon appears at the top of the screen to alert you to the update. Open the notifications panel and tap the icon to update the application.

Uninstalling applications

Uninstall the applications purchased from **Play Store**.

Tap  → **My apps**, select an application to delete in the list of installed applications, and then tap **UNINSTALL**.

Samsung Apps

Use this application to purchase and download dedicated Samsung applications. For more information, visit apps.samsung.com.


Tap **Samsung Apps** on the Applications screen.



This application may not be available depending on the region or service provider.

Installing applications

Browse applications by category. Tap **CATEGORY** to select a category.

To search for an application, tap  at the top of the screen, and then enter a keyword in the search field.

Select an application to view information. To download it, tap **Free**. If there is a charge for the application, tap the price, and follow the on-screen instructions to complete the purchase process.



When a new version is available for any installed application, an update icon appears at the top of the screen to alert you to the update. Open the notifications panel and tap the icon to update the application.

Play Books

Use this application to read and download book files.

Tap **Play Books** on the Applications screen.



This application may not be available depending on the region or service provider.

Play Movies & TV

Use this application to watch, download, and rent movies or TV shows.

Tap **Play Movies & TV** on the Applications screen.



This application may not be available depending on the region or service provider.

Play Music

Use this application to listen to music from the device or stream music from the Google cloud service.

Tap **Play Music** on the Applications screen.



This application may not be available depending on the region or service provider.

Play Games

Use this application to download and play games.

Tap **Play Games** on the Applications screen.



This application may not be available depending on the region or service provider.

Play Newsstand

Use this application to read the latest news articles.

Tap **Play Newsstand** on the Applications screen.



This application may not be available depending on the region or service provider.


Utilities

Memo


Use this application to record important information to save and view at a later date.

Tap **Memo** on the Applications screen.

Composing memos


Tap , enter a memo, and then tap **Save**.

To change the background colour, tap  → **Colour**.

To lock the memo so that others cannot view it, tap  → **Lock**.

Browsing memos

Browse memo thumbnails by scrolling up or down.

To search for a memo, tap .


To change the view mode, tap .

To delete memos, tap .

To sort memos by date, tap  → **Sort by**.

To send the text in memos to others, tap  → **Share text via**.

To send memos to others, tap  → **Share via**.

To print the memo by connecting the device to a printer, tap  → **Print**. Some printers may not be compatible with the device.

To import memos from Google Docs, tap  → **Import**.


To export memos to other storage locations, tap  → **Export**.

To change the memo settings, tap  → **Settings**.

Viewing a memo


Tap a memo thumbnail to open it. Scroll left or right to see more memos.

To edit the memo, tap the content of the memo.

To delete the memo, tap  → **Delete**.

To change the background colour, tap  → **Colour**.

To set a PIN to lock or unlock the memo, tap  → **Lock**.

To print the memo by connecting the device to a printer, tap  → **Print**. Some printers may not be compatible with the device.

To send the text in memos to others, tap  → **Share text via**.

To send the memo to others, tap  → **Share via**.

S Planner

Use this application to manage events and tasks.

Tap **S Planner** on the Applications screen.

Creating events or tasks


Tap , and then use one of the following methods:

- **Add event:** Enter an event with an optional repeat setting.
- **Add task:** Enter a task with an optional priority setting.

To add an event or task more briefly, tap a date to select it and tap it again.





Enter a title and specify which calendar to use or sync with. Then tap **Edit event details** or **Edit task details** to add more details, such as how often the event repeats, when it has an advance alert, or where it takes place.

Attach a map showing the location of the event. Enter the location in the **Location** field, tap  next to the field, and then pinpoint the precise location by tapping and holding on the map that appears.

Attach an image. Tap **Images**, and then take a photo or select one of the existing images.

Syncing with Google Calendar


On the Applications screen, tap **Settings** → **Google** under **Accounts**, select the Google account, and then tick **Sync Calendar**. To manually sync for updating, on the Applications screen, tap **S Planner** →  → **Sync**.

To display synced events or tasks, tap  → **Settings** → **View settings** → **Calendars** → **Display**, select the Google account, and then tap **OK**.

Changing calendar type

Tap the top left of the screen, and then select one from among different types of calendars including month, week, and others. A pinch gesture can be used to change calendar type. For example, pinch to change from the monthly calendar to the yearly calendar, and spread apart to change yearly calendar back to monthly calendar.

Searching for events or tasks

Tap , and then enter a keyword to search for.

To view today's events or tasks, tap **Today** at the top of the screen.

Deleting events or tasks

Select an event or task, and then tap  → **Delete**.

Sharing events or tasks

Select an event or task, tap  → **Share via**, and then select a sharing method.

Drive

Use this application to create and edit documents and share them with others via Google Drive storage. When you create documents or upload files to Google Drive, your device automatically syncs with the web server and any other computer with Google Drive installed. Access your files without transferring or downloading.

Tap **Drive** on the Applications screen.



This application may not be available depending on the region or service provider.

Dropbox



Use this application to save and share files with others via the Dropbox cloud storage. When you save files to Dropbox, your device automatically syncs with the web server and any other computers that have Dropbox installed.

Tap **Dropbox** on the Applications screen.





This application may not be available depending on the region or service provider.

Sign in to your Dropbox account. If you do not have it, create a Dropbox account.

Once Dropbox is activated, tap **Turn on Camera Upload** to upload photos and videos taken with the device's camera to Dropbox automatically. To view the uploaded photos or videos, tap . To share or delete files or create albums, tap , and then select files.

To upload files to Dropbox, tap  →  → **Upload here** → **Photos or videos** or **Other files**. To open files in Dropbox, select a file.

While viewing images or videos, tap  to add it to the favourites list. To open files in the favourites list, tap .

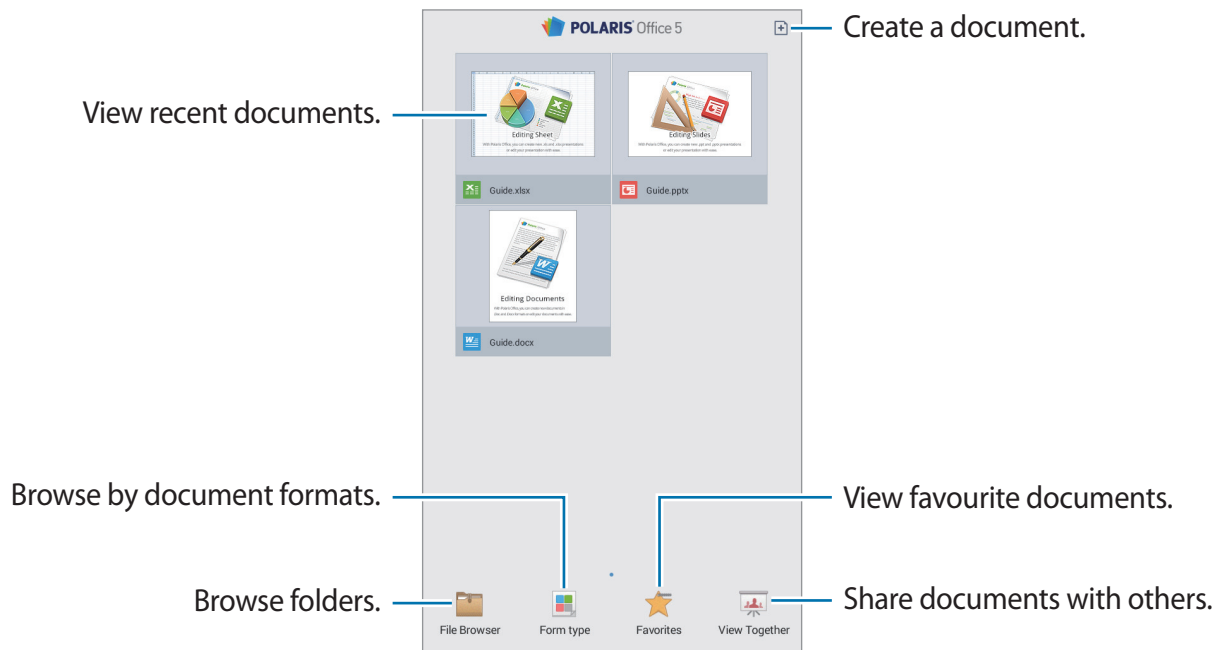
POLARIS Office 5

Use this application to edit documents in various formats, including spreadsheets and presentations.

Tap **POLARIS Office 5** on the Applications screen.



Some functions may not be available, depending on the file type.



Creating documents

Tap , and then select a document type.

Use the editing toolbar at the top of the screen to edit the document.

To finish, tap the document icon at the top left of the screen, tap **Save**, enter a filename, select a folder to save to, and then tap **Save**.

To save the document as a PDF file, tap the document icon at the top left of the screen, tap **PDF export**, enter a filename, and then tap **Export**.

While editing the documents, tap , and then use one of the following functions:

- **Switch to View Mode:** Preview the document.
- **Slide note:** Edit memos on slides.
- **Find/Replace:** Search for or replace text.
- **Page layout:** Change the layout of pages.
- **Screen Conversion:** Apply animation or transition effects to slides.
- **View Settings:** Change the view mode settings.
- **Read All:** Read the document via the text-to-speech feature.
- **Filter:** View cells filtered by specific criteria.
- **Sort:** Sort cells by specific criteria.
- **Protect worksheet:** Lock the sheet so that others cannot edit it.
- **Freeze frame:** Keep the selected row in place.
- **Recalculation:** Recalculate the functions on the sheet.
- **Screen capture:** Capture the selected area.
- **View Information:** View the document details.
- **Help:** Access help information for using the POLARIS Office.

Reading documents

Tap a file on the recent documents screen. Or tap **File Browser**, **Form type**, **Favorites**, or **View Together**, and then select a file to open.

To draw on the document, tap .

To search for a text string in the document, tap .

Tap , and then use one of the following functions:

- **Switch to Edit Mode:** Open the editing toolbar.
- **Single slide view:** View slides one by one.
- **Bookmark:** Open the Bookmark panel. Select a label to go to bookmarks point.
- **View Settings:** Change the view mode settings.
- **Slide note:** Edit memos on slides.

- **Freeze frame:** Keep the selected row in place.
- **Screen capture:** Capture the selected area.
- **View Information:** View the document details.
- **Help:** Access help information for using the POLARIS Office.

Sharing documents

Share documents with multiple devices that are connected to the same Wi-Fi. While sharing documents, you can write a note or draw on the screen.

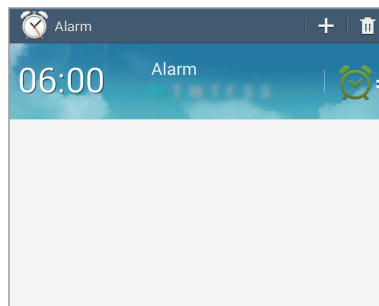
To create a sharing group, tap **View Together** → . Select a document to share, enter a name and password for the sharing group, and then tap **OK**.

To join a sharing group, search for and join the sharing group with the password.

Alarm


Use this application to set alarms for important events.

Tap **Alarm** on the Applications screen.





Turn this alarm on or off.

Setting alarms

Tap , set a time for the alarm to go off, select days for the alarm to repeat, and then tap **Save**.

- **Location alarm:** Set a location. The alarm goes off only when you are in the location.
- **Snooze:** Set an interval and the number of times for the alarm to repeat after the preset time.
- **Smart alarm:** Set a time for the alarm to go off before the preset time.

Stopping alarms

Drag  outside the large circle to stop an alarm. Drag  outside the large circle to repeat the alarm after a specified length of time.

Deleting alarms

Tap and hold the alarm, and then tap **Delete**.

World Clock

Use this application to check the time of many major cities in the world.


Tap **World Clock** on the Applications screen.

Creating clocks

Tap , enter a city name or select a city from the globe, and then tap .

To apply summer time, tap and hold a clock, and then tap **DST settings**.


Deleting clocks

Tap , select clocks, and then tap **Delete**.

Calculator

Use this application for simple or complex calculations.

Tap **Calculator** on the Applications screen.

Rotate the device to landscape orientation to display the scientific calculator. If **Screen rotation** is disabled, tap  → **Scientific calculator**.

To see the calculation history, tap  to hide the keypad.

To clear the history, tap  → **Clear history**.

S Voice

Use this application to command the device by voice to perform various features.

Tap **S Voice** on the Applications screen.



- This application may not be available depending on the region or service provider.
- This application is not supported in some languages.

Here are several examples of spoken commands:

- Open music
- Launch calculator
- Check schedule

Tips for better voice recognition

- Speak clearly.
- Speak in quiet places.
- Do not use offensive or slang words.
- Avoid speaking in dialectal accents.

The device may not recognise your commands or may perform unwanted commands depending on your surroundings or how you speak.

Using wake-up commands on the locked screen

On the locked screen, you can use various functions with preset wake-up commands.

To activate this feature, on the Applications screen, tap **Settings** → **Lock screen**, and then tick **Wake up in lock screen**. Tap **Set wake-up command**, and then set functions and voice commands.

Google


Use this application to search not only the Internet, but also applications and their contents on the device as well.

Tap **Google** on the Applications screen.




This application may not be available depending on the region or service provider.

Searching the device


Tap the search field, and then enter a keyword. Alternatively, tap , and then speak a keyword.

Search scope

To select what applications to search, tap  → **Settings** → **Tablet search**, and then tick the items to search for.

Google Now

Launch Google search to view Google Now cards that show the current weather, public transit info, your next appointment, and more when you are most likely to need it.

Join Google Now when opening Google search for the first time. To change Google Now settings, tap  → **Settings**, and then drag the **Google Now** switch to the left or right.

Voice Search

Use this application to search webpages by speaking.

Tap **Voice Search** on the Applications screen.





This application may not be available depending on the region or service provider.

Speak a keyword or phrase when **Speak now** appears on the screen.




My Files

Use this application to access all kinds of files stored in the device, including images, videos, songs, and sound clips.







Tap **My Files** on the Applications screen.

Select a folder to open it. To go back to the parent folder, tap . To return to the root directory, tap .

In a folder, use one of the following functions:

- : Search for files.
- : Change the view mode.
- : Create a folder.
- **Time**: Sort files or folders.

Select a file or folder by ticking, and then use one of the following functions:

- : Copy files or folders to another folder.
- : Move files or folders to another folder.
- : Delete files or folders.
- : Send files to others.
-  → **Rename**: Rename a file or folder.
-  → **Details**: View file or folder details.

Downloads

Use this application to see what files are downloaded through the applications.

Tap **Downloads** on the Applications screen.



This application may not be available depending on the region or service provider.

To see the files downloaded from the Internet, tap **Internet downloads**, otherwise, tap **Other downloads** to see the files downloaded from other applications, such as **Email**.

Select a file to open it with an appropriate application.

To sort the files by size, tap **Sort by size**.

To sort the files by date, tap **Sort by date**.

To clear the history, tap **Clear list**.

Travel & local

Maps

Use this application to pinpoint the location of the device, search for places, or get directions. Tap **Maps** on the Applications screen.



This application may not be available depending on the region or service provider.

Searching for locations

Search for locations by entering an address or a keyword. Once the location is found, select a location to view the detailed information. Refer to the help for more information.

Getting directions for a destination

Tap **Y** to set starting and ending locations, and then select a travel method. The device shows the routes to get to the destination.

Settings

About Settings

Use this application to configure the device, set application options, and add accounts. Tap **Settings** on the Applications screen.


Wi-Fi

Activate the Wi-Fi feature to connect to a Wi-Fi network and access the Internet or other network devices.

To use options, tap .

- **Advanced:** Customise Wi-Fi settings.
- **WPS push button:** Connect to a secured Wi-Fi network with a WPS button.
- **WPS PIN entry:** Connect to a secured Wi-Fi network with a WPS PIN.

Setting Wi-Fi sleep policy

On the Settings screen, tap **Wi-Fi** →  → **Advanced** → **Keep Wi-Fi on during sleep**.

Setting Network notification

The device can detect open Wi-Fi networks and display an icon on the status bar to notify when available.

On the Settings screen, tap **Wi-Fi** →  → **Advanced** and tick **Network notification** to activate this feature.

Wi-Fi Direct

Wi-Fi Direct connects two devices directly via a Wi-Fi network without requiring an access point.

On the Settings screen, tap **Wi-Fi** → **Wi-Fi Direct**.

Bluetooth

Activate the Bluetooth feature to exchange information over short distances.

To use more options, tap .

- **Visibility timeout:** Set duration that the device is visible.
- **Received files:** View received files via the Bluetooth feature.
- **Rename device:** Set a Bluetooth name for the device.

Data usage

Keep track of your data usage amount.

- **Data usage cycle:** Enter monthly reset date to monitor your data usage.

To use more options, tap .

- **Auto sync data:** Activate or deactivate auto-syncing of applications. You can select what information to sync for each account in **Settings** → **Accounts**.
- **Mobile hotspots:** Select Wi-Fi hotspots to prevent applications that are running in the background from using them.

More settings

Customise settings to control connections with other devices or networks.

Flight mode

This disables all wireless functions on your device. You can use only non-network services.

Printing

Configure settings for printer plug-ins installed on the device. You can search for available printers or add one manually to print files via Wi-Fi or cloud services.

VPN

Set up and connect to virtual private networks (VPNs).

Nearby devices

- **Device name:** View the device name.
- **Content to share:** Set the device to share your content with other devices.
- **Allowed devices:** View the list of devices that can access your device.
- **Denied devices:** View the list of devices that are blocked from accessing your device.
- **Download to:** Select a memory location for saving media files.
- **Download from other devices:** Set the device to accept uploads from other devices.

Blocking mode

Select which notifications will be blocked and how long to block them.

Hands-free mode

Set the device to read contents aloud and specify applications to use in hands-free mode.

Sound

Change settings for various sounds on the device.

- **Volume:** Adjust the volume level for music and videos, system sounds, and notifications.
- **Notifications:** Select a ringtone for events, such as incoming messages.
- **Touch sounds:** Set the device to sound when selecting an application or option on the touch screen.
- **Screen lock sound:** Set the device to sound when locking or unlocking the touch screen.
- **Samsung applications:** Change the notification settings for each application.
- **Sound when tapped:** Set the device to sound when a key is touched.

Display

Change the settings for the display.

- **Wallpaper:**
 - **Home screen:** Select a background image for the Home screen.
 - **Lock screen:** Select a background image for the locked screen.
 - **Home and lock screens:** Select a background image for the Home screen and the locked screen.
- **Notification panel:** Customise the items that appear on the notifications panel.
- **Multi window:** Set the device to use Multi window.
- **Brightness:** Set the brightness of the display.
- **Screen timeout:** Set the length of time the device waits before turning off the display's backlight.
- **Daydream:** Set the device to launch a screensaver when your device is connected to a desktop dock or charging.
- **Font style:** Change the font type for display text.
- **Font size:** Change the font size.
- **Display battery percentage:** Set the device to display the remaining battery life.

Storage

View memory information for your device and memory card, or format a memory card.



Formatting a memory card permanently deletes all data from it.



The actual available capacity of the internal memory is less than the specified capacity because the operating system and default applications occupy part of the memory. The available capacity may change when you upgrade the device.

Power saving mode

Activate power-saving mode and change the settings for power-saving mode.

- **CPU performance:** Set the device to limit some system resource usage.
- **Screen output:** Set the device to decrease the brightness of the display.
- **Learn about Power saving:** Discover how to reduce battery consumption.

Battery

View the amount of battery power consumed by your device.

Application manager

View and manage the applications on your device.

Default applications

Select a default setting for using applications.

Users

Set up and manage user profiles for personalised settings.

Location

Change settings for location information permissions.

- **Mode:** Select a method to collect your location data.
- **Recent location requests:** View which applications request your current location information and their battery usage.
- **Location services:** View the location services your device is using.
- **My places:** Set up profiles that will be used for specific locations when you use GPS, Wi-Fi, or Bluetooth features to find your current location.

Lock screen

Change settings for the locked screen.

- **Screen lock:** Activate the screen lock feature. The following options may vary depending on the screen lock feature selected.
- **Multiple widgets:** Set the device to allow use of widgets on the locked screen.
- **Lock screen widgets:** These settings are applied only when you set the swipe lock option.
 - **Clock or personal message:** Set the device to show a clock or personal message on the locked screen. The following options may vary, depending on your selection.

For a clock:

- **Clock size:** Change the size of the clock.
- **Show date:** Set the device to show the date with the clock.
- **Owner information:** Enter your information that is shown with the clock.

For a personal message:

- **Edit personal information:** Edit the personal message.

- **Shortcuts:** Set the device to show and edit application shortcuts on the locked screen.



This feature may not be available depending on the region or service provider.

- **Help text:** Set the device to show the help text on the locked screen.
- **Wake up in lock screen:** Set the device to recognise your wake up command when the screen is locked.
- **Set wake-up command:** Set a wake up command to launch **S Voice** or perform a specified function.

Security

Change settings for securing the device.

- **Encrypt device:** Set a password to encrypt data saved on the device. You must enter the password each time you turn on the device.



Charge the battery before enabling this setting because it may take more than an hour to encrypt your data.

- **Encrypt external SD card:** Set the device to encrypt files on a memory card.



If you reset your device to the factory defaults with this setting enabled, the device will not be able to read your encrypted files. Disable this setting before resetting the device.

- **Remote controls:** Set the device to allow control of your lost or stolen device remotely via the Internet. To use this feature, you must sign in to your Samsung account.
 - **Account registration:** Add or view your Samsung account.
 - **Use wireless networks:** Set the device to allow location data collection or to determine the location of your lost or stolen device via Wi-Fi.
- **Go to website:** Access the Find my mobile website (*findmymobile.samsung.com*). You can track and control your lost or stolen device on the Find my mobile website.
- **Make passwords visible:** By default, the device hides passwords for security. Set the device to display passwords as they are entered.

- **Device administrators:** View device administrators installed on the device. You can allow device administrators to apply new policies to the device.
- **Unknown sources:** Set the device to allow the installation of applications from unknown sources.
- **Verify apps:** Set the device to allow Google to check applications for harmful behaviour before installing them.
- **Storage type:** Set a storage type for credential files.
- **Trusted credentials:** Use certificates and credentials to ensure secure use of various applications.
- **Install from device storage:** Install encrypted certificates stored on the USB storage.
- **Clear credentials:** Erase the credential contents from the device and reset the password.

Language and input

Change the settings for text input. Some options may not be available depending on the selected language.

Language

Select a display language for all menus and applications.

Default

Select a default keyboard type for text input.

Samsung keyboard

To change the Samsung keyboard settings, tap .



The available options may vary depending on the region or service provider.

- **Input languages:** Select languages for text input.
- **Predictive text:** Activate predictive text mode to predict words based on your input and show word suggestions. You can also customise the word prediction settings.

- **Auto replacement:** Set the device to correct misspelled and incomplete words by tapping the space bar or punctuation mark.
- **Auto capitalisation:** Set the device to automatically capitalise the first character after a final punctuation mark, such as a full stop, question mark, or exclamation mark.
- **Auto spacing:** Set the device to automatically insert a space between words.
- **Auto-punctuate:** Set the device to insert a full stop when you double-tap the space bar.
- **Keyboard swipe:**
 - **None:** Set the device to deactivate the keyboard swipe feature.
 - **Continuous input:** Set the device to enter text by sweeping on the keyboard.
 - **Cursor control:** Enable the smart keyboard navigation feature to move the cursor by scrolling the keyboard.
- **Sound:** Set the device to sound when a key is touched.
- **Character preview:** Set the device to display a large image of each character tapped.
- **Tutorial:** Learn how to enter text with the Samsung keyboard.
- **Reset settings:** Reset Samsung keyboard settings.

Google voice typing

To change the voice input settings, tap .

- **Choose input languages:** Select input languages for text input.
- **Block offensive words:** Set the device to prevent the device from recognising offensive words in voice inputs.
- **Offline speech recognition:** Download and install language data for offline voice input.

Voice search

- **Language:** Select a language for the voice recognition.
- **“Ok Google” hotword detection:** Set the device to begin voice recognition when you say the wake up command while using the search application.




This feature may not be available depending on the region or service provider.

- **Speech output:** Set the device to provide voice feedback to alert you to the current action.
- **Block offensive words:** Hide offensive words from voice search results.

- **Offline speech recognition:** Download and install language data for offline voice input.
- **Personalised recognition:** Set the device to use information from your Google dashboard to improve speech recognition accuracy.
- **Bluetooth headset:** Set the device to allow a voice search with a Bluetooth headset, when one is connected to the device.

Text-to-speech options

- **Preferred TTS engine:** Select a speech synthesis engine. To change the settings for speech synthesis engines, tap .
- **Speech rate:** Select a speed for the text-to-speech feature.
- **Listen to an example:** Listen to the spoken text for an example.
- **Default language status:** View the status of the default language for the text-to-speech feature.

Pointer speed

Adjust the pointer speed for the mouse or trackpad connected to your device.

Backup and reset

Change the settings for managing settings and data.

- **Back up my data:** Set the device to back up settings and application data to the Google server.
- **Backup account:** Set up or edit your Google backup account.
- **Automatic restore:** Set the device to restore settings and application data when the applications are reinstalled on the device.
- **Factory data reset:** Reset settings to the factory default values and delete all data.

Add account

Add email or SNS accounts.

Accessories

Change the accessory settings.

- **Dock sound:** Set the device to play a sound when your device is connected to or removed from a desktop dock.
- **Audio output mode:** Set the device to use the dock speaker when your device is connected to a desktop dock.

Date and time

Access and alter the following settings to control how the device displays the time and date.




If the battery remains fully discharged or removed from the device, the time and date is reset.

- **Set date:** Set the current date manually.
- **Set time:** Set the current time manually.
- **Select time zone:** Set the home time zone.
- **Use 24-hour format:** Display time in 24-hour format.
- **Select date format:** Select a date format.

Accessibility

Accessibility services are special features for those with certain physical disabilities. Access and alert the following settings to improve accessibility to the device.

- **Auto rotate screen:** Set the interface to rotate automatically when you rotate the device.
- **Screen timeout:** Set the length of time the device waits before turning off the display's backlight.
- **Speak passwords:** Set the device to read aloud passwords you enter with Talkback.
- **Show shortcut:** Add a shortcut to **Accessibility** or **TalkBack** on the quick menu that appears when you press and hold the Power button.
- **TalkBack:** Activate Talkback, which provides voice feedback.
- **Font size:** Change the font size.

- **Magnification gestures:** Set this to zoom in and out with finger gestures.
- **Accessibility shortcut:** Set the device to activate TalkBack when you press and hold the Power button, and then tap and hold the screen with two fingers.
- **Text-to-speech options:**
 - **Preferred TTS engine:** Select a speech synthesis engine. To change the settings for speech synthesis engines, tap .
 - **Speech rate:** Select a speed for the text-to-speech feature.
 - **Listen to an example:** Listen to the spoken text for an example.
 - **Default language status:** View the status of the default language for the text-to-speech feature.
- **Mono audio:** Enable mono sound when listening to audio with one earbud.
- **Turn off all sounds:** Mute all device sounds.
- **Google subtitles (CC):** Set the device to display closed captions on content supported by Google and to change the closed caption settings.
- **Samsung subtitles (CC):** Set the device to display closed captions on content supported by Samsung and to change the closed caption settings.
- **Tap and hold delay:** Set the recognition time for tapping and holding the screen.

About device

Access device information and update device software.

Google Settings

Use this application to configure settings for some features provided by Google.

Tap **Google Settings** on the Applications screen.

Troubleshooting

Before contacting a Samsung Service Centre, please attempt the following solutions. Some situations may not apply to your device.

When you turn on your device or while you are using the device, it prompts you to enter one of the following codes:

- **Password:** When the device lock feature is enabled, you must enter the password you set for the device.
- **PIN:** When using the device for the first time or when the PIN requirement is enabled, you must enter the PIN supplied with the SIM or USIM card. You can disable this feature by using the Lock SIM card menu.
- **PUK:** Your SIM or USIM card is blocked, usually as a result of entering your PIN incorrectly several times. You must enter the PUK supplied by your service provider.
- **PIN2:** When you access a menu requiring the PIN2, you must enter the PIN2 supplied with the SIM or USIM card. For details, contact your service provider.

Your device displays network or service error messages

- When you are in areas with weak signals or poor reception, you may lose reception. Move to another area and try again. While moving, error messages may appear repeatedly.
- You cannot access some options without a subscription. Contact your service provider for more details.

Your device does not turn on

- When the battery is completely discharged, your device will not turn on. Charge the battery completely before turning on the device.
- The battery may not be inserted properly. Insert the battery again.
- Wipe both gold-coloured contacts and insert the battery again.

The touch screen responds slowly or improperly

- If you attach a protective cover or optional accessories to the touch screen, the touch screen may not function properly.
- If you are wearing gloves, if your hands are not clean while touching the touch screen, or if you tap the screen with sharp objects or your fingertips, the touch screen may malfunction.
- The touch screen may malfunction in humid conditions or when exposed to water.
- Restart your device to clear any temporary software bugs.
- Ensure that your device software is upgraded to the latest version.
- If the touch screen is scratched or damaged, visit a Samsung Service Centre.

Your device freezes or has fatal errors

If your device freezes or hangs, you may need to close applications or reinsert the battery and turn on the device to regain functionality. If your device is frozen and unresponsive, press and hold the Power button for 8-10 seconds to reboot.

If this does not solve the problem, perform a factory data reset. On the Applications screen, tap **Settings** → **Backup and reset** → **Factory data reset** → **Reset device** → **Erase everything**. Before performing the factory data reset, remember to make backup copies of all important data stored on the device.

If the problem is still not resolved, contact a Samsung Service Centre.

Calls are not connected

- Ensure that you have accessed the right cellular network.
- Ensure that you have not set call barring for the phone number you are dialling.
- Ensure that you have not set call barring for the incoming phone number.

Others cannot hear you speaking on a call

- Ensure that you are not covering the built-in microphone.
- Ensure that the microphone is close to your mouth.
- If using a headset, ensure that it is properly connected.

Sound echoes during a call

Adjust the volume by pressing the Volume button or move to another area.

A cellular network or the Internet is often disconnected or audio quality is poor

- Ensure that you are not blocking the device's internal antenna.
- When you are in areas with weak signals or poor reception, you may lose reception. You may have connectivity problems due to issues with the service provider's base station. Move to another area and try again.
- When using the device while moving, wireless network services may be disabled due to issues with the service provider's network.

The battery icon is empty

Your battery is low. Recharge or replace the battery.

The battery does not charge properly (For Samsung-approved chargers)

- Ensure that the charger is connected properly.
- If the battery terminals are dirty, the battery may not charge properly or the device may turn off. Wipe both gold-coloured contacts and try charging the battery again.
- The batteries in some devices are not user-replaceable. To have the battery replaced, visit a Samsung Service Centre.

The battery depletes faster than when first purchased

- When you expose the battery to very cold or very hot temperatures, the useful charge may be reduced.
- Battery consumption increases when you use messaging features or some applications, such as games or the Internet.
- The battery is consumable and the useful charge will get shorter over time.

Your device is hot to the touch

When you use applications that require more power or use applications on your device for an extended period of time, your device may feel hot to the touch. This is normal and should not affect your device's lifespan or performance.

Error messages appear when launching the camera

Your device must have sufficient available memory and battery power to operate the camera application. If you receive error messages when launching the camera, try the following:

- Charge the battery or replace it with a battery that is fully charged.
- Free some memory by transferring files to a computer or deleting files from your device.
- Restart the device. If you are still having trouble with the camera application after trying these tips, contact a Samsung Service Centre.

Photo quality is poorer than the preview

- The quality of your photos may vary, depending on the surroundings and the photography techniques you use.
- If you take photos in dark areas, at night, or indoors, image noise may occur or images may be out of focus.

Error messages appear when opening multimedia files

If you receive error messages or multimedia files do not play when you open them on your device, try the following:

- Free some memory by transferring files to a computer or deleting files from your device.
- Ensure that the music file is not Digital Rights Management (DRM)-protected. If the file is DRM-protected, ensure that you have the appropriate licence or key to play the file.
- Ensure that the file formats are supported by the device. If a file format is not supported, such as DivX or AC3, install an application that supports it. To confirm the file formats that your device supports, visit www.samsung.com.

- Your device supports photos and videos captured with the device. Photos and videos captured by other devices may not work properly.
- Your device supports multimedia files that are authorised by your network service provider or providers of additional services. Some content circulated on the Internet, such as ringtones, videos, or wallpapers, may not work properly.

Another Bluetooth device is not located

- Ensure that the Bluetooth wireless feature is activated on your device.
- Ensure that the Bluetooth wireless feature is activated on the device you wish to connect to.
- Ensure that your device and the other Bluetooth device are within the maximum Bluetooth range (10 m).

If the tips above do not solve the problem, contact a Samsung Service Centre.

A connection is not established when you connect the device to a computer

- Ensure that the USB cable you are using is compatible with your device.
- Ensure that you have the proper driver installed and updated on your computer.
- If you are a Windows XP user, ensure that you have Windows XP Service Pack 3 or higher installed on your computer.
- Ensure that you have Samsung Kies or Windows Media Player 10 or higher installed on your computer.

Your device cannot find your current location

GPS signals may be obstructed in some locations, such as indoors. Set the device to use Wi-Fi or a mobile network to find your current location in these situations.

Data stored on the device has been lost

Always make backup copies of all important data stored on the device. Otherwise, you cannot restore data if it is corrupted or lost. Samsung is not responsible for the loss of data stored on the device.

A small gap appears around the outside of the device case

- This gap is a necessary manufacturing feature and some minor rocking or vibration of parts may occur.
- Over time, friction between parts may cause this gap to expand slightly.

Some content may differ from your device depending on the region, service provider, or software version, and is subject to change without prior notice.

