

## Safety And Regulatory Information

### Safety & Regulatory Information

The following sections contain notices for various countries:

#### Caution

This product is intended for use with FCC/CE certified computer equipment. Please check the equipment operating/installation manual and/or with the equipment manufacturer to verify/confirm if your equipment is suitable prior to the installation or use of the product.

#### Notice for USA

FCC Part 15: This equipment has been tested and found to comply with the limits for a Class B digital device, pursuant to Part 15 of the FCC Rules. These limits are designed to provide reasonable protection against harmful interference in a residential installation. This equipment generates, uses and can radiate radio frequency energy and, if not installed and used in accordance with the instructions, may cause harmful interference to radio communications. However, there is no guarantee that interference will not occur in a particular installation. If this equipment does cause harmful interference to radio or television reception, which can be determined by turning the equipment off and on, the user is encouraged to try to correct the interference by one or more of the following measures:

- Reorient or relocate the receiving antenna.
- Increase the separation between the equipment and receiver.
- Connect the equipment into an outlet on a circuit different from that to which the receiver is connected.
- Consult the dealer or an experienced radio/TV technician for help.

This device complies with part 15 of the FCC Rules. Operation is subject to the following two conditions:

1. This device may not cause harmful interference, and
2. This device must accept any interference received, including interference that may cause undesired operation.

#### Caution

To comply with the limits of the Class B digital device, pursuant to Part 15 of the FCC Rules, this device must be installed with computer equipment certified to comply with Class B limits. All cables used to connect to the computer and peripherals must be shielded and grounded. Operation with non-certified computers or non-shielded cables may result in interference to radio or television reception.

#### Modification

Any changes or modifications not expressly approved by the grantee of this device could void the user's authority to operate the device.

#### Notice for Canada

This Class B digital apparatus complies with Canadian ICES-003. Cet appareil numérique de la classe B est conforme à la norme NMB-003 du Canada.

#### Canadian Class B Statement

This digital device does not exceed the Class B limits for radio noise emissions from digital apparatus as set out in the interference-causing equipment standard entitled "Digital Apparatus," ICES-003 of the Department of Communications.

Cet appareil numérique respecte les limites de bruits radioélectriques applicables aux appareils numériques de Classe B prescrites dans la norme sur le matériel brouilleur: "Appareils Numériques," NMB-003 édictée par le ministre des Communications.

#### MODIFICATION:

Any changes or modifications not expressly approved by the grantee of this device could void the user's authority to operate the device. Toute modification non approuvée explicitement par le fournisseur de licence de l'appareil peut entraîner l'annulation du droit de l'utilisateur à utiliser l'appareil.

#### State of California Proposition 65:

**WARNING:** Handling this product may expose you to chemicals known to the State of California to cause cancer and birth defects or other reproductive harm. **Wash hands after handling.**

#### Explanatory Note

California Safe Drinking Water and Toxic Enforcement Act of 1986 (Proposition 65) requires special product labeling for products containing certain chemicals known to the State of California to cause cancer, birth defects or other reproductive harm. Creative has chosen to provide a warning based on its knowledge about the presence of one or more listed chemicals without attempting to evaluate the level of exposure. With Creative's products, the exposure may be below the Proposition 65 level of concern, or could even be zero. However, out of an abundance of caution, Creative has elected to place the Proposition 65 warning on its products.

## Declaration Of Conformity

Manufacturer / Importer's Name: **Creative Labs, Inc.**  
 Manufacturer / Importer's Address: **1901 McCarthy Boulevard  
 Milpitas, CA. 95035  
 United States  
 Tel: (408) 428-6600**

declares under its sole responsibility that the product

Trade Name: **Creative Labs**

Model Numbers: **MF0385**

has been tested according to the FCC/CISPR22/97 requirement for class B devices and found compliant with the following standards:

**EM/EMC: ANSI C63.4 2003, FCC Part 15 Subpart B  
 Complies with Canadian ICES-003**

#### Class B

This device complies with part 15 of the FCC Rules. Operation is subject to the following two conditions:

1. This device may not cause harmful interference, and
2. This device must accept any interference received, including interference that may cause undesirable operation.

Ce matériel est conforme à la section 15 des règles FCC. Son Fonctionnement est soumis aux deux conditions suivantes:

1. Le matériel ne peut être source D'interférences et
2. Doit accepter toutes les interférences reçues, Y compris celles pouvant provoquer un fonctionnement indésirable.

Compliance Manager  
 Creative Labs, Inc.  
 July 10, 2009

## EN English

**Specifications**  
**Creative Inspire S2**  
 Power output  
 Satellite speaker: **6 watts RMS per channel**  
 Subwoofer: **17 watts RMS**  
 Signal-to-Noise Ratio: **75dB**  
 Frequency Response: **40Hz - 20kHz**

This product operates from the supplied 14V DC 1.9A power adapter or from an integrated power supply.

#### Important Notice

The serial number for your Creative Inspire S2 is located on the subwoofer. Please write this number down and keep it in a secure place.

## ES Español

**Especificaciones**  
**Creative Inspire S2**  
 Salida de alimentación  
 Altavoz auxiliar: **6 vatios de carga eficaz por canal**  
 Altavoz de graves: **17 vatios de carga eficaz**  
 Relación de señal a ruido: **75dB**  
 Respuesta de frecuencias: **40Hz a 20kHz**  
 Este producto funciona con el adaptador de alimentación de ca de 14 V de CC 1,9 A suministrado o con la fuente de alimentación integrada.

#### Aviso importante

El número de serie para Creative Inspire S2 se encuentra en el altavoz de graves. Anote este número y guárdelo.

## TR Türkçe

**Müzik, Film, ve Oyun uygulamaları için Hoparlör Sistemi.**  
 Paket İçeriği  
 Uydu hoparlörler: **2 adet**  
 Çözünürlük  
**Creative Inspire S2**  
 Ses çıkışı  
 Satelit hoparlör: **Kanal başına 6 W RMS**  
 Subwoofer: **17 watt RMS**  
 İşaret-Gürültü Oranı: **75 dB**  
 Frekans Yanıtı: **40 Hz ~ 20 kHz**  
 Bu ürün 14V DC 1.9A güç adaptörü veya entegre güç kaynağından gelen güçle çalışır.

#### Önemli

Creative Inspire S2'nin seri numarası subwoofer üzerindedir. Lütfen bu numarayı bir yere not edin ve güvenli bir yerde saklayın.

**Bu ürün için yazılım veya kurulum CD'si gerekmemektedir.**

## JP 日本語

**仕様**  
**Creative Inspire S2**  
 出力  
 サテライトスピーカー: **6W RMS/チャンネル**  
 サブウーファー: **17W RMS**  
 SNR(S/N比): **75dB**  
 周波数特性: **40Hz ~ 20kHz**  
 この製品は付属の14V DC電源アダプター(1.9A)または内蔵電源ユニットで駆動します。

#### 注意事項

本製品のシリアルナンバーはサブウーファー上に記載されています。この番号を控えて保存しておいて下さい。

## FR Français

**Spécifications**  
**Creative Inspire S2**  
 Sortie de l'alimentation  
 Haut-parleur satellite: **6 watts RMS par canal**  
 Caisson de basse: **17 watts RMS**  
 Rapport signal/bruit: **75dB**  
 Réponse en fréquence: **40Hz - 20kHz**

Ce produit fonctionne avec l'adaptateur d'alimentation fourni de 14V CC / 1,9 A, ou à partir d'une source d'alimentation intégrée.

#### Avis important

Le numéro de série de votre Inspire S2 de Creative se trouve sur le caisson de basses. Veuillez prendre ce numéro en note et le conserver en lieu sûr.

## BP Português do Brasil

**Especificações**  
**Creative Inspire S2**  
 Saída de alimentação  
 Alto-falante: **RMS de 6 watts por canal**  
 Subwoofer: **RMS de 17 watts**  
 Relação sinal/ruído: **75dB**  
 Resposta de frequência: **40Hz a 20kHz**  
 Este produto funciona com um adaptador de alimentação fornecido de 14 V DC de 1,9 A, ou com uma fonte de alimentação integrada.

#### Nota importante

O número de série do seu Creative Inspire S2 está localizado no subwoofer. Por favor, tome nota deste número e guarde-o em um lugar seguro.

## CT 繁體中文

#### 規格

**Creative Inspire S2**  
 功率輸出  
 衛星喇叭: **每聲道 6 瓦 (RMS)**  
 重低音音箱: **17 瓦輸出功率**  
 訊噪比: **75dB**  
 頻率響應: **40Hz ~ 20kHz**

本產品由所提供的 14V DC 1.9A 變壓器中或者整合電源供電。

#### 重要提示

Creative Inspire S2 的序號在重低音音箱上。請抄下這個序號並妥善保管。

## CS 简体中文

#### 规格

**Creative Inspire S2**  
 功率输出  
 卫星音箱: **额定功率 6 瓦 (每声道)**  
 低音炮: **额定功率 17 瓦**  
 信噪比: **75dB**  
 频率响应: **40Hz ~ 20kHz**

本产品由所提供的 14V DC 1.9A 变压器或者集成电源供电。

#### 重要提示

Creative Inspire S2 的序列号在低音炮上。请将此序列号记录下来并妥善保存。

CREATIVE

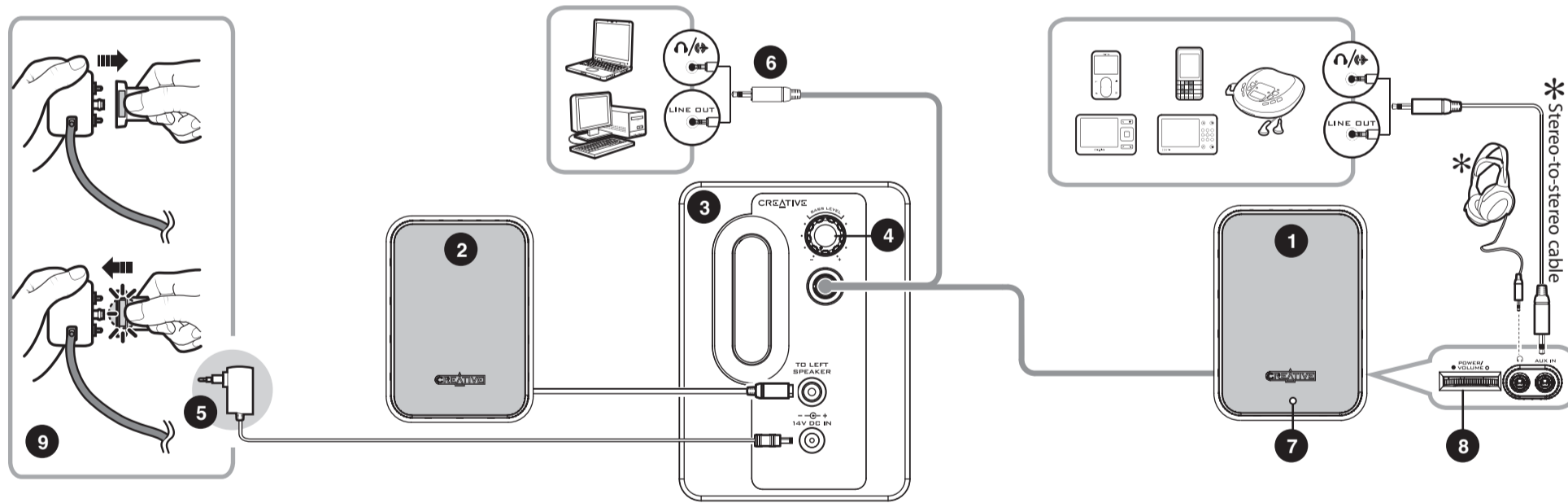


- EN Quick Start Guide
- FR Démarrage Rapide
- ES Guía Rápida
- BP Introdução rápida
- TR Kurulum ve Kullanım Kılavuzu
- CT 快速入門指南
- JP クイックスタートガイド
- CS 快速开始指南

INSPIRE™ S2

P/N 03MF038500000 Rev A

## • Connectivity Diagram • Schéma de connexion • Diagramm zur conectividad • Diagramm zur conectividade • Balant diyagram • 連接示意圖 • 接続図 • 连接示意图



\* • Optional (sold separately) • Facultatif (vendu séparément) • Opcional (se vende por separado) • Opcional (vendido separadamente) • 選購配件 (另行購買) • オプション (別売) • 选购件 (另行购买) • isteğe bağlı (ayrı olarak sayılır)

EN English	FR Français	ES Español	BP Português do Brasil	TR Türkçe	CT 繁體中文	JP 日本語	CS 简体中文
<b>1</b> Right Satellite Speaker	Haut-parleur satellite droit	Altavoz satélite derecho	Alto-falante direito	Sağ Hoparlör	右環繞喇叭	サテライトスピーカー(右)	右卫星音箱
<b>2</b> Left Satellite Speaker	Haut-parleur satellite gauche	Altavoz satélite izquierdo	Alto-falante esquerdo	Sol Hoparlör	左環繞喇叭	サテライトスピーカー(左)	左卫星音箱
<b>3</b> Subwoofer	Caisson de basses	Subgrave	Subwoofer	Subwoofer	重低音音箱	サブウーファー	低音炮
<b>4</b> Bass Level Control	Bouton de réglage des basses	Control de nivel de graves	Control de nível de graves	Bas seviye kontrolü	低音旋鈕	バスレベルコントロール	低音音量控制
<b>5</b> To Wall Outlet (Disconnect when not in use for several days) (Types of adapter may vary in different countries)	Vers la prise mural (Déconnectez le système si vous n'avez pas l'intention de l'utiliser pendant plusieurs jours) (Le modèle peut varier selon le pays)	A la toma de corriente (desconéctelo cuando no se vaya a utilizar durante varios días) (los tipos de adaptadores pueden variar según el país)	Para Tomada Eléctrica (Desconectar quando não estiver em uso por vários dias) (Os tipos de adaptador podem variar em diferentes países)	Elektrik Fişi (Birkaç gün kullanılmayacak ise bağ lantıyı kesin) (Adaptör tipini ülkelere göre farklılık göstermesi mümkündür)	至牆壁插座 (長時間不用時請拔下電源插頭) (不同國家, 變壓器類型可能不同)	ACコンセントへ接続 (数日間使用しない時はコンセントを抜いて下さい) (付属の電源アダプター以外は使用しないで下さい)	至牆壁插座 (長時間不用請拔下電源插頭) (不同國家, 變壓器類型可能不同)
<b>6</b> To Analog Audio Source	Vers la source audio analogique	Fuente de sonido analoga	Fonte de áudio analógico	Analog Ses Kaynaklarına	至類比音源	オーディオ(アナログ)出力へ接続	接至模拟音源
<b>7</b> Power LED (The system is always connected to the mains)	Diode électroluminescente POWER (le système reste connecté en permanence aux haut-parleurs principaux)	LED Power (El sistema siempre está conectado a la red eléctrica)	Indicador LED de alimentación (O sistema fica conectado constantemente à rede elétrica)	Güç LED'i (Sistem her zaman prize takılıdır)	電源指示燈 (總是將系統連接至電源)	パワーLED (システムはメインのサブウーファーに接続されています)	电源 LED 指示灯 (系统总是与电源相连)
<b>8</b> Power/Volume Switch	Bouton alimentation/volume	Interruptor de alimentación/volumen	Chave Liga/desliga e de volume	Güç/Ses Dügmesi	電源/音量開關	電源/ボリュームスイッチ	电源/音量旋鈕
<b>9</b> Adapter Setup Instructions Note: Disconnect the power adapter from the power outlet before changing plugs. Use a plug that is appropriate for your country or region. Ensure the adapter is firmly secured. *DO NOT attempt to service any part of the adapter yourself. Refer all servicing to qualified service personnel.	Instructions de configuration de l'adaptateur Remarque : débranchez l'adaptateur de courant de la prise d'alimentation avant de changer la prise adaptateur. Utilisez le type de prise adaptateur en vigueur dans votre pays ou région. Vérifiez que l'adaptateur est bien en place. *N'essayez PAS de réparer l'adaptateur vous-même. La réparation de l'appareil doit être effectuée par un personnel qualifié.	Instrucciones para instalar el adaptador de corriente Nota: desconecte el adaptador de corriente de la toma antes de cambiar los enchufes. Utilice un enchufe apropiado para su país o región. Asegúrese de que el adaptador esté bien sujeto. *NO intente arreglar ninguna parte del adaptador por su cuenta. Dichos arreglos deberán ser realizados por personal cualificado.	Instruções para configuração do adaptador Nota: antes de mudar as fichas, desligue o cabo de alimentação da tomada. Utilize uma tomada apropriada para o seu país ou região. Certifique-se de que o adaptador está preso com firmeza. *NÃO tente efectuar reparações a qualquer parte do adaptador. Toda e qualquer assistência deverá ser efectuada por pessoal técnico qualificado.	Adaptör Kurulum Yönergeleri Not: Takılı olan fişi çıkarmak için mandala basın. Yaşadığınız ülke veya bölgeye uygun bir fiş kullanın. Adaptörün yerine tam oturmasna dikkat edin. *Adaptörün hiçbir parçasının bakımını yapmaya CALIŞMAYIN. Her türlü servis ve onarım için, yetkili servis personeline başvurun.	變壓器安裝指南 注意: 更換插頭之前將變壓器從電源插座上拔下。 選擇一個在您在國家或地區適用的插頭。 確保變壓器連接牢固。 不要自行維修變壓器的任何部分。所有的維修應由專業人員進行。	アダプター取り扱い説明 注意: フラグを変更する際はコンセントから電源アダプターを取り外してから行って下さい。 国や地域に合ったプラグをお選びください。アダプターがしっかり固定されることを確認してください。 ご自身でアダプターを修理することは避けてください。 修理は、弊社カスタマーサービス係りにお問い合わせ下さい。	變壓器安裝指南 注意: 更換插頭之前要斷開電源變壓器和電源插座的連接。 選擇的插頭要適用於您的國家或地區。 確保變壓器連接牢固。 不要試圖自己維修變壓器的任何部分。 所有的維修應由專業人員處理。