



# Prestigio

10 YEARS IN THE ART OF HI-TECH



## RoadRunner 710X

PCDVRR710X

Portable Car Video Recorder

### User Manual

Version 1.0

[www.prestigio.com](http://www.prestigio.com)

## About this user manual

This user manual is specially designed to detail the device's functions and features.

- Please read this manual before using the device to ensure safe and proper use.
- Descriptions are based on the device's default settings.
- Prestigio continuously strives to improve its products. Due to software upgrading, some contents in this user manual may be different from your product. Prestigio reserves the rights to revise this user manual or withdraw it at any time without prior notice. Please take your product as standard.

## Conventions used in this manual

In this user manual, we use the following symbols to indicate useful and important information:



**Caution:** provides safety precaution and important information.



**Note:** gives additional information.



**Tips:** usage tips.

# Contents

<b>1. Unboxing .....</b>	<b>1</b>
Open your package .....	1
Your DVR at a glance .....	2
Buttons.....	2
<b>2. Getting started.....</b>	<b>3</b>
Mount your DVR .....	3
Insert a memory card.....	4
Replace the cover.....	4
Power on your DVR.....	4
<b>3. Basics.....</b>	<b>5</b>
Charge the battery .....	5
Connect to your PC .....	5
<b>4. Settings.....</b>	<b>6</b>
Connect to your TV .....	6
Set up your DVR .....	6
Set up options .....	7
<b>5. Video record and photo capture .....</b>	<b>8</b>
Record videos.....	8
Take photos.....	8
<b>6. Multimedia .....</b>	<b>9</b>
Connect to your TV .....	9
Watch a video .....	9
View your photos .....	9
<b>7. Specifications .....</b>	<b>10</b>
<b>8. Troubleshooting.....</b>	<b>11</b>
<b>9. Safety precautions .....</b>	<b>12</b>

# 1. Unboxing

1

## Open your package

- Prestigio DVR



- Car charger



- Rotatable body bracket



- Windshield suction mount



- Car bracket connector



- Helmet bracket



- Sliding part



- Vertical connector



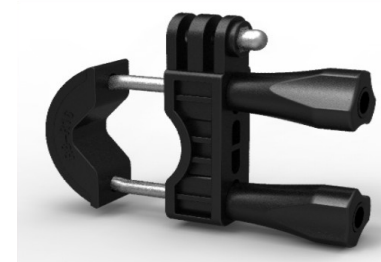
- Horizontal connector



- Head string



- Bicycle bracket



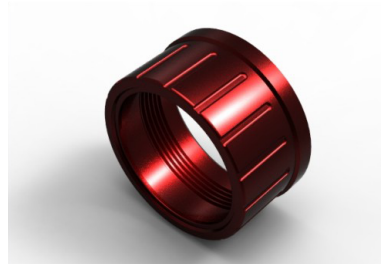
- Anti-slide car pad



- 47mm string



- Car case back

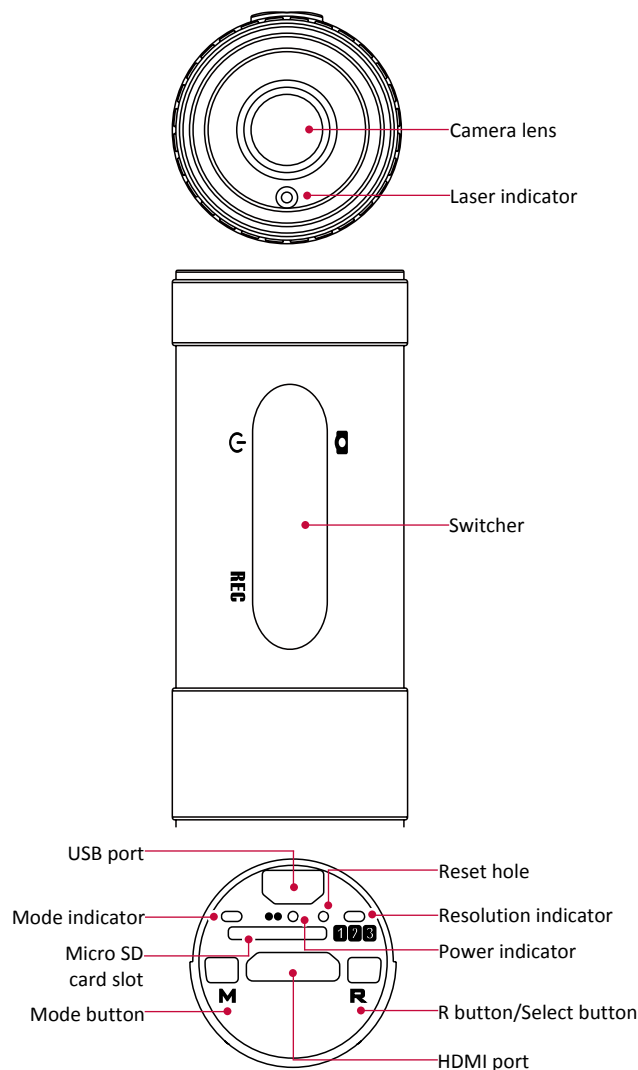


- Adapter
- Quick start guide

- HDMI cable
- warranty card

- USB cable

## Your DVR at a glance



## Buttons

Button	Definition	Specification
[⏻]	Power	<ul style="list-style-type: none"> <li>Slide the switcher to [⏻] to power on your DVR.</li> <li>slide and hold the switcher to [⏻] to power off your DVR.</li> </ul>
[📷]	Camera	<ul style="list-style-type: none"> <li>Slide the switcher to [📷] to take a photo.</li> <li>Slide the switcher to [📷] to confirm the selection while connecting your DVR to the TV.</li> </ul>
[REC]	Menu	<ul style="list-style-type: none"> <li>Slide the switcher to [REC] to start video recording.</li> </ul>
[R]	Selection	<ul style="list-style-type: none"> <li>Press to select the resolution.</li> <li>Press to make a selection while connecting your DVR to the TV.</li> </ul>
[M]	Mode	<ul style="list-style-type: none"> <li>Press to switch between standard and flip recording mode.</li> <li>Press to switch among <b>MOVIE</b>, <b>PHOTO</b>, <b>REC</b> and <b>SETUP</b> modes while connecting your DVR to the TV.</li> </ul>

## 2. Getting started

# 2

Congratulations on your purchase and welcome to Prestigio. To get the most of your product and enjoy all Prestigio has to offer, please access:

<http://www.prestigio.com/catalogue/DVRs>

More details about your product, please access:

<http://www.prestigio.com/support>



Please read the 9. Safety precautions on page 12 before use.

### Mount your DVR

Follow the steps below to mount your DVR. Remember to power off your DVR before mounting it.



Please insert your DVR to the rotatable body bracket to the desired angle before mounting your DVR.

### For car use

You need the following accessories to mount your DVR for car use.

- Prestigio DVR
- Rotatable body bracket
- Windshield suction mount
- Car bracket connector
- 47mm string



### For flat surfaces

You need the following accessories to mount your DVR for a flat surface.

- Prestigio DVR
- Rotatable body bracket
- Sliding part
- Anti-slide car pad
- 47mm string

### For outdoor sports

You need the following accessories to mount your DVR for a bicycle use.

- Prestigio DVR
- Rotatable body bracket
- Bicycle bracket
- Horizontal connector
- 47mm string





 Be careful not to damage your fingernails when you mounting your DVR.


## Insert a memory card

You need to insert a memory card before video recording and taking photos. Depending on the memory card manufacturer and type, some memory cards may not be compatible with your device.

1. Unscrew the cover of your DVR.
2. Insert a memory card with the gold-coloured contacts facing downwards.
3. Push the memory card into the slot until it locks in place.

 • Some memory cards may not be fully compatible with the device. Using an incompatible card may damage the device or the memory card, or corrupt the data stored in it.  
• Use caution to insert the memory card right-side up.

 • If there is no memory card detected when your DVR is powered on, the buzzer will keep beeping and power off automatically.  
• If the memory card is less capacity, the buzzer will keep beeping and power off automatically.  
• Frequent writing and erasing of data shortens the lifespan of memory cards.

 **Remove the memory card:** push the memory card until it disengages from the device, and then pull it out.


## Storage capacity for your reference



Storage card(G)	H.264 1080P/30fps	H.264 720P/60fps	H.264 720P/30fps	2592 X 1944 (5M)
8G	90min	150min	200min	10500 photos
4G	45min	70min	100min	5200 photos
2G	22min	35min	50min	2600 photos
1G	10min	17min	25min	1300 photos

## Replace the cover

1. Align the cover onto the part of your DVR.
2. Screw to replace the cover.

## Power on your DVR

Slide the switcher to  to power on your DVR. You will hear a buzzer beep for 5 times and the laser indicator light on at the same time. Your DVR goes to standby mode at this time.

 To turn off your DVR, slide and hold the switcher to  for a few seconds until you hearing a long buzzer beep.

# 3. Basics

# 3

## Charge the battery

A new battery is partially charged. Do the following to charge the battery:

### Use the adapter

1. Plug the small end of the charger into the USB port of the device, and plug the large end to the adapter.
2. Plug the adapter into an electric socket
3. After fully charging, disconnect the device from the charger. First unplug the charger from the device, and then unplug it from the electric socket.

### Use the car charger

1. Plug the small end of the charger into the USB port of the device, and plug the large end to the car charger.
2. Plug the car charger to your car.
3. After fully charging, disconnect the device from the charger. First unplug the charger from the device, and then unplug it from the car.



Always use authentic accessories as they enable your battery to perform at its peak. Nonauthentic accessories (eg. chargers) can damage your battery and even your DVR.



You also can use "POWER BANK/5V-1A" to charge the battery.

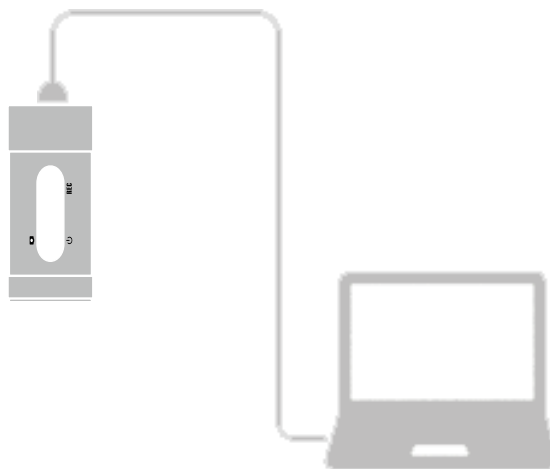


- Keeping the charger plugged to the DVR when the battery is fully charged will not damage the battery. The only way to turn off the charger is to unplug it, so it is advisable to use an easily accessible power socket.
- If a fully charged battery left unused, it will lost its charge over time.
- If your DVR is being used for the first time or has not been used for a prolonged period, it may take longer time to recharge.

## Connect to your PC

You may need to connect your DVR to the PC in order to complete activation. Your DVR's USB port lets you exchange media and other files with a connected PC.

- Connect your DVR to the PC using the supplied USB cable.



## Load files to your PC

1. Connect your DVR to the PC by using the USB cable.
2. Copy video and photos from the device to the PC.



# 4. Settings

# 4

You can set up your DVR before record videos and capture photos in burst. To finish this operation, you need to connect your DVR to the TV.

## Connect to your TV

1. Connect your DVR to the TV by using the supplied HDMI cable.

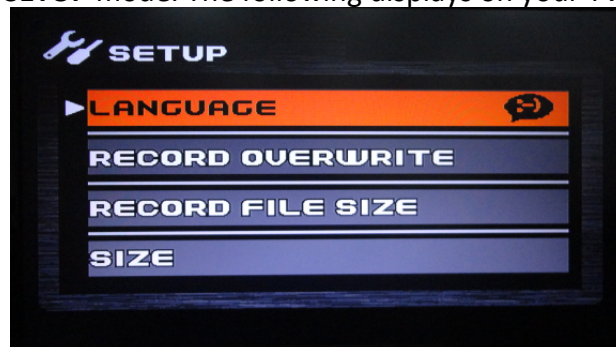


2. Switch your TV to HDMI mode.
3. Slide the switcher to [⏻] to power on your DVR. Your DVR is in preview mode now.
4. While connecting to your TV, use the following buttons to control playback:
  - Press [M] to switch among **MOVIE**, **PHOTO**, **REC** and **SETUP** modes.
  - Slide the switcher to [📺] and release it to confirm.
  - Press [R] to make a selection.

## Set up your DVR

Follow the steps to finish settings:

1. Connect your DVR to the TV by using the supplied HDMI cable.
2. Switch your TV to HDMI mode.
3. Slide the switcher to [⏻] to power on your DVR.
4. Press [M] to switch to **SETUP** mode. The following displays on your TV:



5. Use the following buttons to set up your DVR:
  - Slide the switcher to [📺] and release it to confirm and exit.
  - Press [R] to make selection.

---

## Set up options

The following settings are available:

Options	What it means
Language	Select a language displayed on the TV.
Record overwrite	Once there is no more free space left on the Micro SD card the device will automatically erase the oldest files on the card and continue recording new ones.
Record file size	Select the video clip time.
Size	Set the resolution of photos.
Date time stamp	Add date and time stamp to the videos and photos.
Format	Format the Micro SD card connected to your DVR.
Time setup	Set up the current time and date.
Default setting	Restore to default settings.
Night mode	Select night mode if in a lowlight situation. The video quality in Night mode depends on ambient illumination and other environmental factors.
Flicker	Select a band to avoid the impacts on photos caused by flickers from lighting sources.
Firmware version	Check the firmware version of your current system.

# 5. Video record and photo capture

## 5

With your DVR, you can record high-quality videos and capture photos in burst, which can be the evidence when the accident happens.



Please confirm that there is a Micro SD card connected before video recording.

---

### Record videos

1. Slide the switcher to [⏻] to power on your DVR. You will hear a buzzer beep for 5 times and the laser indicator light on at the same time.
2. Press [R] to choose the recording resolution.
  - When the Resolution indicator is red, the resolution is 1280x720p 60fps.
  - When the Resolution indicator is yellow, the resolution is 1280x720p 30fps.
  - When the Resolution indicator is green, the resolution is 1920x1080p 30fps.
3. Press [M] to change the recording mode.
  - When the Mode indicator is red, it is flip recording mode.
  - When the Mode indicator is green, it is standard recording mode.
4. Slide the switcher to [REC] to start video recording.
5. To stop video recording, slide the switcher to the centre.

---

### Take photos

1. Slide the switcher to [⏻] to power on your DVR. You will hear a buzzer beep for 5 times and the laser indicator light on at the same time.
2. Aim your camera lens to the subject.
3. Slide the switcher to [📷] and release it to capture photos in burst. There is a buzzer beep if the photo captured successfully.

# 6. Multimedia

# 6

You can watch the videos and view the photos taken by the DVR.



You need to connect your DVR to the TV to watch the videos and view the photos.

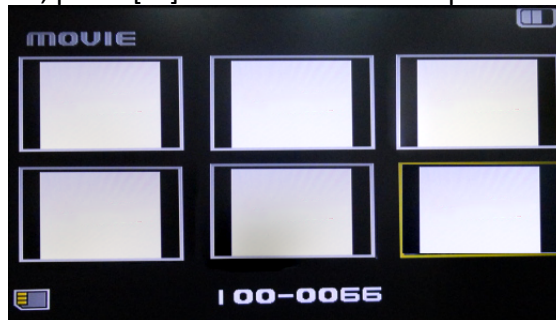
## Connect to your TV

Your DVR's HDMI cable lets you watch the videos and view photos on your TV.

1. Connect your DVR to the TV by using the supplied HDMI cable.
2. Switch your TV to HDMI mode.
3. Slide the switcher to [U] to power on your DVR. Your DVR is in preview mode now.
4. While connecting to your TV, use the following buttons to control playback:
  - Press [M] to switch among **MOVIE**, **PHOTO**, **REC** and **SETUP** modes.
  - Slide the switcher to [O] and release it to confirm.
  - Press [R] to make a selection.

## Watch a video

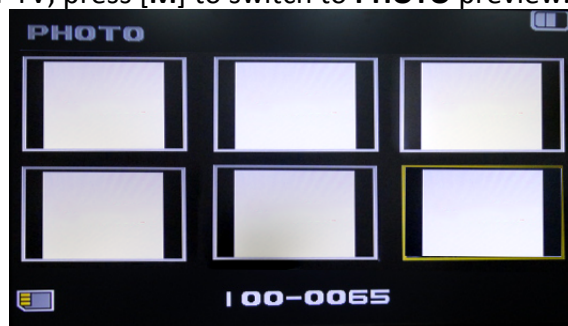
1. After connecting to your TV, press [M] to switch to **MOVIE** preview.



2. Use the [R] button to choose your desired video.
3. Slide the switcher to [O] and release it to start playing the video.
4. Slide and release the switcher to pause or resume playing.
5. Press [M] to exit.

## View your photos

1. After connecting to your TV, press [M] to switch to **PHOTO** preview.



2. Use the [R] button to choose your desired photo.
3. Slide the switcher to [O] and release it to toggle among photos.
4. Press [M] to exit.

# 7. Specifications

## 7

Item	Specification
Recording resolution	1080P(1920x1080/30fps) 720P/60(1280x720/60fps) 720P/30(1280x720/30fps)
Video format	MOV
Picture format	JPG
Power source	Rechargeable battery and 220V charger
Interfaces	HDMI, USB, Micro SD card (Supports max 32GB, high-speed Micro SD card recommended)
Na Microphone	Built-in
Operating temperature	0°~ 45°C

# 8. Troubleshooting

A red square with a white number 8 inside, serving as a section marker.

## **The device does not switch on**

Charge the device immediately. Unplug the charger and try to switch the device on.

## **Your device seems to over heat**

You might be using a charger that was not intended for use with your device. Make sure you always use the authentic accessory shipped with your device.

## **The picture captured with the device is not clear**

Make sure that the camera lens on both sides is clean.

## **Your device freezes or has fatal errors**

If your device freezes or hangs, you may need to press the reset hole on the device. You may need some sharp thing to insert it to the reset hole, for example, a metal pin.

# 9. Safety precautions

## 9

Please observe all safety precautions before using your DVR. Please follow all procedures outlined in this user manual to correctly operate the device.

- Do not attempt to open the shell or attempt to repair, if the device or any parts are defective, please go to the professional maintenance point for repairing.
- To avoid risk of electrical shock, do not connect or disconnect the device with wet hands.
- Do not place the device near a heat source or directly expose it to flame or heat.
- Never place the device in vicinity of equipments generating strong electromagnetic fields. Exposure to strong magnetic fields may cause malfunctions or data corruption and loss.
- Please use the device under natural temperature, do not work under the temperature which human body cannot adapt to.
- Do not use harsh chemicals, cleaning solvents or cleaning agents to clean the device. Please use a slightly damp soft cloth to clean the device.
- Please use it under sufficient light, please do not make the lens directly face to the sun or other super-light so as to avoid damage to the optical components.
- Do not use it in dusty environment in order to avoid the lens and other components to be dusty and affect the camera effects

**CE** As the Prestigio products are constantly updated and improved, your device's software and hardware may have a slightly different appearance or modified functionality than presented in this User manual.

Prestigio hereby states that this RoadRunner complies to basic requirements and another relevant regulations given by the EU directive 1999/5/EC. Full version of the declaration of conformity is available on:

<http://www.prestigio.com/compliance>.